

LEMKE CATTLE 15TH *annual*

BULL & HEIFER SALE

FRIDAY, FEBRUARY 12, 2021

1:30 PM | LEMKE SALE FACILITY | LAWRENCE, NE



Reliable Leading Genetics

SELLING 66 ANGUS HYBRID, RED ANGUS, AND ANGUS BULLS
PLUS! 40 Fancy Commercial Red Angus Heifers

WELCOME



**Randy, Leslie, Sammy & Matt,
Taylor, and Tanner Lemke**

Home/Sale Barn: 402-756-7090

Randy: 402-469-2284 / Leslie: 402-469-5589

Email: rllemke@gtmc.net

DIRECTIONS TO THE SALE SITE

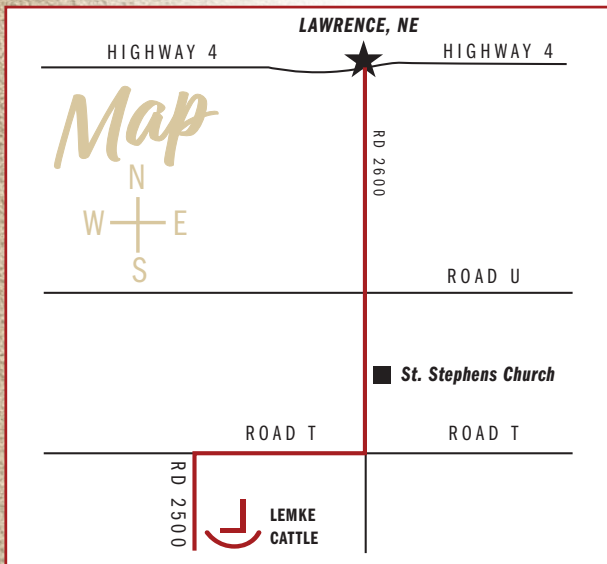
1757 Road 2500 / Lawrence, NE 68957

From Lawrence, Nebraska

3 Miles South on Road 2600

1 Mile West on Road T

1/4 Mile South on Road 2500



LEMKE CATTLE 15TH annual

BULL & HEIFER SALE

FRIDAY, FEBRUARY 12, 2021

1:30 PM | LEMKE SALE FACILITY | LAWRENCE, NE

Thank you for your interest in our 15th Annual Lemke Cattle Bull & Heifer Sale! Over half of the sale offering are ET's from our elite donors. We continue to multiply our top genetics from our leading donors through our aggressive ET program which provides groups of top quality brothers. One of our goals is to provide our customers with the most progressive and proven genetics out there to give you an ADVANTAGE. Our genetics give you that ADVANTAGE with the ability to produce value added cattle whether retaining replacement heifers, marketing unweaned calves, backgrounded feeders, bred heifers or finished cattle.

Our program gives you an ADVANTAGE with decades of investment in AI and ET genetics while also investing in DNA technology to give you the most accurate Genomic Enhanced EPDs possible.

More ADVANTAGES include: developing bulls for longevity, carcass ultrasound testing, vaccination and fertility testing protocols, first breeding season guarantees, marketing assistance and producing genetics with the ability to qualify for elite marketing programs like Top Dollar Angus. Real genetic value and satisfied customers is our primary goal.

Please join us Friday, February 12th at the ranch south of Lawrence, NE and enjoy good cattle, good food, and good people!

Sincerely,
The Lemke Family



LEMKECATTLE.COM

LEMKE CATTLE ANNUAL BULL & HEIFER SALE

15th Annual Bull Sale

FRIDAY - 1:30 PM

FEBRUARY 12, 2021

LEMKE CATTLE SALE FACILITY - LAWRENCE, NE

SALE DAY CONTACTS

Home/Sale Barn --- 402-756-7090

Randy's Cell --- 402-469-2284

Leslie's Cell --- 402-469-5589

AUCTIONEER

Matt Lowery --- 308-750-6119

REPRESENTATIVES

Midwest Messenger, Chris Beutler --- 402-380-8244

Tri State Livestock News, Drew Feller --- 402-841-4215

Livestock Plus, Randy Rasby --- 308-539-6195

Livestock Plus, Jay Eldfelt --- 308-293 3049

ACCOMODATIONS

Blue Hill Motel, Blue Hill, NE --- 402-756-3901

Comfort Inn, Hastings, NE --- 402-463-5252

LUNCH A beef meal will be provided sale day starting at 12:00 PM.

ABSENTEE BIDDING

Call Randy a few days prior to the auction. We can take bids over the phone during the auction, have designated bidders for you, or bid live on DV Auction, whichever you feel comfortable with. All absentee bids will be handled with integrity and professionalism.

GUARANTEE

Buyers of all bulls selling for \$4,000 or more injured during the first breeding season will have a 100% credit at the next sale at the value of the purchase price minus \$1,500 salvage value. Contact Lemke Cattle promptly in this event. The breeding season is defined as the 90 day period following the first turnout of a bull. The death of a bull will be covered with 50% credit at the next sale. Guarantee applies to bulls in single bull breeding pastures!

FEEDING

The bulls are fed a high roughage ration so they develop, not get fat. Customer feedback has been that the bulls hold up very well.

HEALTH

All bulls are on a complete health program. Vaccinated with IBR, BVD Type I and II, P13, BRSV, Pasturella, 7-way, Haemophilus, wormed and poured. All bulls have tested negative BVD.

Stephen Russell, DVM --- 785-527-0594

All bulls will have passed a fertility test and examination.

ANNOUNCEMENTS

Any announcements made sale day will take precedence over any information printed in the catalog.

SALE SUPPLEMENT

A sale supplement sheet with ultrasound data, scrotal measurements, and yearling weights will be available sale day.

DELIVERY

Free delivery of bulls in Nebraska and Northern Kansas, or meet at central locations. Transportation of females is the responsibility of the buyer and must be picked up within two days of the sale. We'll be happy to assist with transportation and females will be fed and cared for until picked up.

FREE CARE

Bulls will be fed and cared for at purchaser's risk until April 1st. Bulls may be fed after April 1st at the cost of \$4.00 per head per day. Any bulls picked up within 3 days of sale will have \$100 deducted from the purchase price.

LIABILITY

Every precaution will be taken to protect the safety and comfort of those attending the sale. All persons attending the sale do so at their own risk and neither the owner or sale staff assume any responsibility or liability, legal, or otherwise for any accidents occurring in or about the premises.

SEMEN INTEREST

Lemke Cattle will retain a 1/3 semen interest in any bull selling. Buyer receives full possession and salvage value.

EMBRYO TRANSPLANT CALVES

Embryo Transplant Calves are born to and raised from a recipient cow, therefore the actual birth and weaning weights are not an accurate representation of the calves performance. EPD's give a much more accurate picture of their true genetic potential.

All bulls have been tested and are free of genetic defects.

ONLINE BIDDING AND VIDEOS

The sale will be broadcast live on DV Auction.com with videos available two weeks prior to the sale. Visit DV Auction.com and register at least 24 hours prior to the sale in order to receive your bidder number.

For general questions, please contact the office at 402-316-5460 or support@dvauction.com.

DVAuction

Broadcasting Real-Time Auctions

CALVING EASE STARS

★★★★ Absolute Heifer Bull

★★★ Larger Heifers or Cows

★★ Young and Mature Cows

★ Mature Cows

VOLUME	2 Bulls -- 1% / 3 Bulls -- 2%
DISCOUNTS	4 Bulls -- 3% / 5 Bulls -- 4%

FRIDAY, FEBRUARY 12, 2021 - 1:30 PM

1

Reference Sires



S A V RESOURCE 1441

ANGUS

| R R Rito 707
Rito 707 of Ideal 3407 7075
 | Ideal 3407 of 1418 076
 | S A V 8180 Traveler 004
S A V Blackcap May 4136
 | S A V May 2397

REG
 17016597
DOB
 1/7/2011
TATTOO
 1441

CED	BW	WW	YW	SC	CEM	MILK
1	4.1	69	132	1.15	0	17
MARB	RE	\$W	\$F	\$G	\$B	\$C
-0.08	1.10	54	87	25	112	198



LD CAPITALIST 316

ANGUS

| S A V Final Answer 0035
Connealy Capitalist 028
 | Prides Pita of Conanga 8821
 | C A Future Direction 5321
LD Dixie Erica 2053
 | LD Dixie Erica Oar 0853

REG
 17666102
DOB
 1/26/2013
TATTOO
 316

CED	BW	WW	YW	SC	CEM	MILK
11	-0.5	68	116	0.46	13	30
MARB	RE	\$W	\$F	\$G	\$B	\$C
0.62	0.62	79	105	47	152	257



MUSGRAVE 316 STUNNER

ANGUS

| Connealy Capitalist 028
LD Capitalist 316
 | LD Dixie Erica 2053
 | MCATL Pure Product 903-55
MCATL Blackbird 831-1378
 | MCATL Blackbird 1378-573

REG
 18467508
DOB
 2/19/2016
TATTOO
 1676

CED	BW	WW	YW	SC	CEM	MILK
8	0.2	68	117	1.35	11	23
MARB	RE	\$W	\$F	\$G	\$B	\$C
0.75	0.46	69	119	50	169	274



BALDRIDGE COMMAND C036

ANGUS

| EF Complement 8088
EF Commando 1366
 | Riverbend Young Lucy W1470
 | Hoover Dam
Baldrige Blackbird A030
 | Baldrige Blackbird X89

REG
 18219911
DOB
 1/13/2015
TATTOO
 C036

CED	BW	WW	YW	SC	CEM	MILK
9	0	67	121	0.20	5	29
MARB	RE	\$W	\$F	\$G	\$B	\$C
0.96	0.67	75	97	67	164	258

Reference Sires



HXC ALLEGIANCE 5502C

RED ANGUS

LSF NEXTPECTATION 0083X
LEACHMAN PLEDGE A282Z
 LCOC ZARA TG004
 BECKTON NEBULA P P707
HXC 100Y
 HXC ZIMA 338N

REG
 3494126
DOB
 2/14/2015
TATTOO
 5502C

PRO S	HERD	GRID	CED	BW	WW	YW
66	73	94	10	-1.2	71	120
MILK	CEM	STAY	MARB	YG	CW	REA
34	4	16	1.01	0.17	42	0.15



PIE ONE OF A KIND 352

RED ANGUS

BUF CRK LANCER R017
BUF CRK THE RIGHT KIND U199
 BUF CRK SHOSHONE R353
 LSF SAND HILLS 9008W
PIE FAYETTE 1160
 PIE FAYETTE 782

REG
 1651711
DOB
 2/10/2013
TATTOO
 352

PRO S	HERD	GRID	CED	BW	WW	YW
105	64	41	11	-2.3	89	149
MILK	CEM	STAY	MARB	YG	CW	REA
25	10	10	0.13	-0.00	46	0.42



9 MILE FRANCHISE 6305

RED ANGUS

SPUR FRANCHISE 7070
SPUR FRANCHISE OF GARTON
 H & H IRENE LASS 0135
 TR COLT 45 UT806
C-BAR ABIGRACE Y11
 C-BAR & BROWN ABIGRACE T712

REG
 3555188
DOB
 3/2/2016
TATTOO
 6305

PRO S	HERD	GRID	CED	BW	WW	YW
147	64	83	16	-6.0	54	104
MILK	CEM	STAY	MARB	YG	CW	REA
36	11	10	0.53	0.01	42	0.68



RREDS SENECA 731C

RED ANGUS

BIEBER ROOSEVELT W384
BIEBER ROLLIN DEEP Y118
 BIEBER TILLY 399W
 BECKTON EPIC R397 K
RREDS ASTER 309A
 MLK CRK ASTER 175

REG
 3491307
DOB
 3/1/2015
TATTOO
 731C

PRO S	HERD	GRID	CED	BW	WW	YW
86	81	6	12	-2.5	72	116
MILK	CEM	STAY	MARB	YG	CW	REA
23	5	17	0.02	0.15	26	0.32



Reference Sires



LEM RANSOM 777 ET

BALANCER

| S A V FINAL ANSWER 0035
S A V RESOURCE 1441
 | PRIDES PITA OF CONANGA 8821
 | S A V NET WORTH 4200
MS NET WORTH 341 A
 | LADY WONDERFUL 452P

REG
 1395678
DOB
 1/08/2017
TATTOO
 777 ET

CED	BW	WW	YW	MILK	TM	CEM
12	0.2	74	117	18	54	4
HP	ST	CW	REA	MARB	FAT	FPI
3.08	12	46	0.58	0.39	0.06	80.94

S A V RENOWN 3439

ANGUS

| R R Rito 707
Rito 707 of Ideal 3407 7075
 | Ideal 3407 of 1418 076
 | S A V 8180 Traveler 004
S A V Blackcap May 4136
 | S A V May 2397

REG
 17633839
DOB
 1/07/2013
TATTOO
 3439

CED	BW	WW	YW	SC	CEM	MILK
-2	2.8	71	127	0.44	2	20
MARB	RE	\$W	\$F	\$G	\$B	\$C
-0.12	0.94	66	74	21	95	181



Top Dollar Angus Feeder Calf Program



Promote Your Verified Genetic Investment


Top Dollar Angus is the industry leader in third-party genetic verification and marketing assistance for superior Angus and Red Angus-based feeder cattle. Our program stamps a unique identity on the 'best of the best' by verifying and then showcasing their genetic merit. The Top Dollar Angus team works directly with a large number of feedyards and buyers to provide them with documented superior

feeder cattle, coupled with genetic risk mitigation and the precision understanding they need to pursue your cattle with absolute confidence.

Top Dollar Angus enables cow-calf producers to benefit from the genetic value already built into their herds. Producers that invest in high-end genetics, as well as strong health and nutrition programs, need a means of positively differentiating their calves from average cattle. Top Dollar Angus does that. Industry demand is strong for genetically superior feeder calves with the right supporting documentation. Don't make buyers guess, let them know by putting the Top Dollar Angus badge of honor on your premium genetic investment.



Contact our team for more information and a free evaluation:

   www.topdollarangus.com

Nate Smith, General Manager • (620) 546-4839 • nate@topdollarangus.com
Kacey Jacobson • (701) 391-4646 • kacey@topdollarangus.com
Jake Feddes • (406) 581-8157 • jake@topdollarangus.com
Adam Menker • (419) 310-5344 • adam@topdollarangus.com
Jason Gagnon • (559) 723-6362 • jason@topdollarangus.com
Andy Albrecht • (402) 922-1000 • andy@topdollarangus.com

LEMKE CATTLE

WHY LEMKE BULLS?

Many of the bulls offered are in the Top 1% of the Breed! Compare the numbers, the phenotype, the customer service and marketing assistance; and it is plain to see why our customer base keeps growing. Put us to work for you - building value in your herd!

International Cattle Evaluation Statistical Breakdown 2020

BALANCER Non-Parent Averages

WW	69
YW	106
CW	34
MARB	0.35
FPI	79.50
PG30	1
TM	54

LEMKE Sale Bull Averages

78	TOP 24%
128	TOP 16%
50	TOP 15%
0.40	TOP 34%
84.85	TOP 27%
3	TOP 23%
58	TOP 34%

Semen Available!

LEM FULLBACK 9018 ET



Contact owners: Dale & Rod Holtzen at Hebron, NE
or Randy Lemke at Lemke Cattle Co

LEM RELIABLE 9003 ET



Contact owners: Jared Dick at Shaggy Meadows Red Angus
or Randy Lemke at Lemke Cattle Co

BLACK BALANCER & HYBRID BULLS



LOT 1

1 LEM NEW LEVEL 0403 ET

REG: AMGV1493169 | DOB: 1/26/20 | TAT: 0403H | 9.4GV, 87.5AN, 3.1AR

RITO 707 OF IDEAL 3407 7075

S A V RESOURCE 1441

S A V BLACKCAP MAY 4136

CONNELLY CAPITALIST 028

MS CAPITAL 717 ET

MS FRONTIER 039X ET

Homozygous Black
Polled Balancer

ACT BW	ADJ WW
86	827
CALVING EASE	
★★	



CED	BW	WW	YW	MILK	CEM	HP	ST	YG	CW	REA	MARB	FPI
10	0.4	81	135	16	3	5	15	0.11	42	0.42	0.46	86.78
80%	65%	10%	3%	85%	95%	50%	40%	>95%	20%	80%	15%	10%

LOTS 1-5 FLUSH BROTHERS

Our lot 1 bull raises the standard for a complete herd sire. Long, deep and thick with tons of style and a free moving structure. His young donor dam hails from the same proven and heavy producing cow family as our 300 donor cow, which has produced top herd sires such as LEM REPUTATION and LEM UPRIGHT who have a steady demand for their semen. He carries himself proudly like he knows he's good, but is also calm and easy to handle, which he inherited from his dam. If you're a rancher that is looking to boost consistency to a NEW LEVEL in maternal, carcass and performance traits in your calves, look at him and his brothers. Ranks in the top 1% PG30, top 3% YW, top 10% WW, FPI and top 20% Marb. Top Dollar Angus Qualified.



LOT 2

2 LEM NEW LEADER 0401 ET

REG: AMGV1493167 | DOB: 1/25/20 | TAT: 0401H | 9.4GV, 87.5AN, 3.1AR

RITO 707 OF IDEAL 3407 7075

S A V RESOURCE 1441

S A V BLACKCAP MAY 4136

CONNELLY CAPITALIST 028

MS CAPITAL 717 ET

MS FRONTIER 039X ET

Homozygous Black
Polled Balancer

ACT BW	ADJ WW
78	747
CALVING EASE	
★★	



CED	BW	WW	YW	MILK	CEM	HP	ST	YG	CW	REA	MARB	FPI
9	0.4	73	125	16	2	5	16	0.1	53	0.57	0.18	75.17
90%	65%	30%	10%	85%	>95%	50%	25%	>95%	3%	55%	75%	60%

Built like a herd sire. Leading growth, fertility, maternal and carcass traits. Carbon copy to Lot 1. Tremendous phenotype and docility. This is a front pasture kind of bull! Ranks in the top 1% PG30, top 10% YW and top 15% SC.

3 LEM DEEP IMPACT 0404 ET

REG: AMG1493170 | DOB: 1/27/20 | TAT: 0404H | 9.4GV, 87.5AN, 3.1AR

RITO 707 OF IDEAL 3407 7075

S A V RESOURCE 1441

S A V BLACKCAP MAY 4136

CONNELLY CAPITALIST 028

MS CAPITAL 717 ET

MS FRONTIER 039X ET

Homozygous Black
Polled Balancer

ACT BW	ADJ WW
80	800

CALVING EASE
★★★



CED	BW	WW	YW	MILK	CEM	HP	ST	YG	CW	REA	MARB	FPI
14	-1.6	72	121	16	5	5	17	0.04	50	0.66	0.27	80.45
30%	20%	35%	15%	85%	75%	50%	15%	95%	5%	40%	55%	35%

Maternal power with four generations of donor dams to back it up. Massive, deep and wide as a boxcar with great feet! Imagine the replacement females and steers he'll produce! Will be collected & used back in our program. Ranks in the top 1/3 of the breed for CED, BW, WW, YW, CW, STAY, SC and FPI.



4 LEM RESOURCE 0402 ET

REG: AMG1493168 | DOB: 1/24/20 | TAT: 0402H | 9.4GV, 87.5AN, 3.1AR

RITO 707 OF IDEAL 3407 7075

S A V RESOURCE 1441

S A V BLACKCAP MAY 4136

CONNELLY CAPITALIST 028

MS CAPITAL 717 ET

MS FRONTIER 039X ET

Homozygous Black
Polled Balancer

ACT BW	ADJ WW
84	729

CALVING EASE
★★



CED	BW	WW	YW	MILK	CEM	HP	ST	YG	CW	REA	MARB	FPI
10	1.3	80	133	16	2	5	14	0.11	55	0.55	0.23	79.58
80%	85%	10%	3%	85%	>95%	50%	55%	>95%	2%	60%	65%	40%

Another one of these thick and complete herd sire prospect flush brothers. Ranks in the top 1% PG 30, top 2% CW and top 3% YW.



5 LEM RESOURCE 0405 ET

REG: AMG1493171 | DOB: 1/28/20 | TAT: 0405H | 9.4GV, 87.5AN, 3.1AR

RITO 707 OF IDEAL 3407 7075

S A V RESOURCE 1441

S A V BLACKCAP MAY 4136

CONNELLY CAPITALIST 028

MS CAPITAL 717 ET

MS FRONTIER 039X ET

Homozygous Black
Polled Balancer

ACT BW	ADJ WW
88	691

CALVING EASE
★★★



CED	BW	WW	YW	MILK	CEM	HP	ST	YG	CW	REA	MARB	FPI
14	-1.8	61	105	16	5	5	17	0.12	52	0.56	0.34	75.57
30%	20%	80%	45%	85%	75%	50%	15%	>95%	4%	60%	40%	60%

Thick, balanced and complete like his brothers. These brothers are all in the Top 1% of breed for PG 30, which is an EPD to measure the ability of a sires daughters to rebreed and retain a pregnancy as a first calf heifer at around 30 months of age. Fertility, the #1 thing for profitability in the cow/calf business. Ranks in the top 1% PG30, top 15% SC, top 20% BW, and top 30% CED. Top Dollar Angus Qualified.



LOTS 6-8 FLUSH BROTHERS



LOT 6

6 LEM STUNNER 0427 ET

REG: AMGV1493250 | DOB: 1/17/20 | TAT: 0427H | 4.7GV, 93.7AN, 1.7AR

LD CAPITALIST 316
MUSGRAVE 316 STUNNER
 MCATL BLACKBIRD 831-1378
 S A V RESOURCE 1441
MS RESOURCE 822 ET
 MS BLUESTEM 300 A ET

Homozygous Black
 Polled Balancer

ACT BW	ADJ WW
74	704

CALVING EASE
 ★★★★★



CED	BW	WW	YW	MILK	CEM	HP	ST	YG	CW	REA	MARB	FPI
14	-1.2	86	138	24	10	1	9	0.22	53	0.44	0.52	94.35
30%	30%	3%	2%	15%	5%	90%	>95%	>95%	3%	80%	10%	2%

Looking for that next level herd bull? Take a look at this guy. Heifer bull with power, growth, and style from proven top cow family. Sired by Musgrave Stunner and from a perfect uddered, easy fleshing Resource daughter. Expect fancy females and top performing feeder steers! Will be collected and used back in our program. Ranks in the top 1/3 of the breed for 12 EPDs and indexes, including top 1% DOC, top 2% YW, and top 3% WW, Top Dollar Angus Qualified.



LOT 7

7 LEM STUNNER 0426 ET

REG: AMGV1493249 | DOB: 1/18/20 | TAT: 0426H | 4.7GV, 93.7AN, 1.7AR

LD CAPITALIST 316
MUSGRAVE 316 STUNNER
 MCATL BLACKBIRD 831-1378
 S A V RESOURCE 1441
MS RESOURCE 822 ET
 MS BLUESTEM 300 A ET

Homozygous Black
 Polled Balancer

ACT BW	ADJ WW
70	756

CALVING EASE
 ★★



CED	BW	WW	YW	MILK	CEM	HP	ST	YG	CW	REA	MARB	FPI
14	1.0	89	140	24	9	1	9	0.18	67	0.57	0.43	91.43
30%	80%	2%	2%	15%	15%	90%	>95%	>95%	1%	55%	20%	3%

Herd sire prospect sired by Stunner and from a Resource donor. One of our favorites in the sale. Impressive in his phenotype and data. Very long, deep and wide with thickness and power throughout. With all that power, he still walks very effortlessly with great feet and structure. A standout, front pasture kind of bull! Ranks in the top 1/3 of the breed for 11 EPDs and indexes, including top 1% WW, CW, top 2% YW, and top 4% FPI.



LOT 8

8 LEM STUNNER 0425 ET

REG: AMGV1493248 | DOB: 1/21/20 | TAT: 0425H | 4.7GV, 93.7AN, 1.7AR

LD CAPITALIST 316
MUSGRAVE 316 STUNNER
 MCATL BLACKBIRD 831-1378
 S A V RESOURCE 1441
MS RESOURCE 822 ET
 MS BLUESTEM 300 A ET

Homozygous Black
 Polled Balancer

ACT BW	ADJ WW
72	756

CALVING EASE
 ★★★★★



CED	BW	WW	YW	MILK	CEM	HP	ST	YG	CW	REA	MARB	FPI
14	-0.3	85	133	24	9	1	9	0.24	52	0.32	0.59	94.01
30%	50%	3%	3%	15%	15%	90%	>95%	>95%	4%	90%	5%	2%

Thick, deep and powerful performance. Ranks in the top 1/3 of the breed for 10 EPDs and indexes, top 2% FPI and top 3% WW, YW. Top Dollar Angus Qualified.

LOTS 9-12 FLUSH BROTHERS



LOT 10

9 LEM POTLOAD 0411 ET



REG: AMGV1493234 | DOB: 1/26/20 | TAT: 0411H | 4.7GV, 93.8AN, 1.6AR

- | EF COMMANDO 1366
- BALDRIDGE COMMAND C036**
- | BALDRIDGE BLACKBIRD A030
- | S A V RESOURCE 1441
- MS RESOURCE 626D ET**
- | MS FINAL ANSWER 121Y

Homozygous Black Polled Balancer

ACT BW	ADJ WW
87	737
CALVING EASE	
★★	



CED	BW	WW	YW	MILK	CEM	HP	ST	YG	CW	REA	MARB	FPI
12	0.7	84	147	20	4	6	13	0.11	53	0.54	0.38	87.50
55%	75%	4%	1%	50%	90%	35%	70%	>95%	3%	60%	30%	10%

Tremendous herd Sire prospect. Lots of muscle, base width and capacity, plus he's easy to look at and tame. The 626 donor cow is a maternal powerhouse, very fertile and deep. She continues to produce outstanding sons and daughters and was flushed 3 times averaging 16 good embryos per flush. He will improve power, performance, maternal and carcass traits in your next "potload" of calves. Top Dollar Angus Qualified.

10 LEM TANKER 0409 ET



REG: AMGV1493232 | DOB: 1/22/20 | TAT: 0409H | 4.7GV, 93.8AN, 1.6AR

- | EF COMMANDO 1366
- BALDRIDGE COMMAND C036**
- | BALDRIDGE BLACKBIRD A030
- | S A V RESOURCE 1441
- MS RESOURCE 626D ET**
- | MS FINAL ANSWER 121Y

Homozygous Black Polled Balancer

ACT BW	ADJ WW
88	735
CALVING EASE	
★★	



CED	BW	WW	YW	MILK	CEM	HP	ST	YG	CW	REA	MARB	FPI
11	-0.4	78	134	20	3	6	10	0.15	63	0.61	0.46	86.44
70%	45%	15%	3%	50%	95%	35%	95%	>95%	1%	50%	15%	10%

Long, powerful and tame. Grab a group of these high-powered brothers to sire market topping calves. Ranks in the top 1% CW, top 3% YW, and top 10% FPI. Top Dollar Angus Qualified.

11 LEM COMMAND 0439 ET



REG: AMGV1493252 | DOB: 1/22/20 | TAT: 0439H | 4.7GV, 93.8AN, 1.6AR

- | EF COMMANDO 1366
- BALDRIDGE COMMAND C036**
- | BALDRIDGE BLACKBIRD A030
- | S A V RESOURCE 1441
- MS RESOURCE 626D ET**
- | MS FINAL ANSWER 121Y

Homozygous Black Polled Balancer

ACT BW	ADJ WW
88	750
CALVING EASE	
★★	



CED	BW	WW	YW	MILK	CEM	HP	ST	YG	CW	REA	MARB	FPI
12	-0.5	86	152	20	4	6	10	0.14	62	0.68	0.55	94.80
55%	45%	3%	1%	50%	90%	35%	95%	>95%	1%	35%	10%	2%

Stout and correct with top growth, maternal and carcass traits. Ranks in the top 1% YW, CW, top 2% FPI, top 3% WW, and top 10% Marb. Top Dollar Angus Qualified.

12 LEM COMMAND 0410 ET



REG: AMGV1493233 | DOB: 1/24/20 | TAT: 0410H | 4.7GV, 93.8AN, 1.6AR

- | EF COMMANDO 1366
- BALDRIDGE COMMAND C036**
- | BALDRIDGE BLACKBIRD A030
- | S A V RESOURCE 1441
- MS RESOURCE 626D ET**
- | MS FINAL ANSWER 121Y

Homozygous Black Polled Balancer

ACT BW	ADJ WW
82	706
CALVING EASE	
★★	



CED	BW	WW	YW	MILK	CEM	HP	ST	YG	CW	REA	MARB	FPI
12	0.2	85	149	20	4	6	11	0.16	56	0.44	0.53	92.48
55%	60%	3%	1%	50%	90%	35%	90%	>95%	2%	80%	10%	3%

Growth, fertility, maternal and carcass all at the top. Ranks in the top 1% YW and top 3% WW, FPI. Top Dollar Angus Qualified.

LOTS 13-15 FLUSH BROTHERS



LOT 13

13 LEM WIDE RANGE 0406 ET

REG: AMGV1493186 | DOB: 1/25/20 | TAT: 0406H | 9.4GV, 87.5AN, 3.1AR

RITO 707 OF IDEAL 3407 7075
S A V RESOURCE 1441
 S A V BLACKCAP MAY 4136
 CONNEALY CAPITALIST 028
MS CAPITAL 715 ET
 MS FRONTIER 039X ET

Homozygous Black Polled Balancer	
ACT BW	ADJ WW
74	773
CALVING EASE	
★★★	



CED	BW	WW	YW	MILK	CEM	HP	ST	YG	CW	REA	MARB	FPI
15	-0.9	80	137	16	5	5	13	0.09	49	0.47	0.22	83.46
20%	35%	10%	2%	85%	75%	50%	70%	>95%	10%	75%	65%	20%

Super thick and lots of style, just like his perfect uddered donor dam. Ranks in the top 1% PG30, top 2% YW, top 5% DOC, and top 20% FPI.



LOT 14

14 LEM CAPTAIN 0408 ET

REG: AMGV1493188 | DOB: 1/26/20 | TAT: 0408H | 9.4GV, 87.5AN, 3.1AR

RITO 707 OF IDEAL 3407 7075
S A V RESOURCE 1441
 S A V BLACKCAP MAY 4136
 CONNEALY CAPITALIST 028
MS CAPITAL 715 ET
 MS FRONTIER 039X ET

Homozygous Black Polled Balancer	
ACT BW	ADJ WW
78	705
CALVING EASE	
★★	



CED	BW	WW	YW	MILK	CEM	HP	ST	YG	CW	REA	MARB	FPI
15	0.1	80	139	16	5	5	13	0.09	49	0.54	0.15	80.92
20%	60%	10%	2%	85%	75%	50%	70%	>95%	10%	60%	85%	30%

Lots 13, 14, and 15 are ET brothers that will sire top growth and give your calves that extra "look" sale day. Keep every heifer. Rank in the top 1% PG30 and top 2% YW.



LOT 15

15 LEM COLONEL 0407 ET

REG: AMGV1493187 | DOB: 1/24/20 | TAT: 0407H | 9.4GV, 87.5AN, 3.1AR

RITO 707 OF IDEAL 3407 7075
S A V RESOURCE 1441
 S A V BLACKCAP MAY 4136
 CONNEALY CAPITALIST 028
MS CAPITAL 715 ET
 MS FRONTIER 039X ET

Homozygous Black Polled Balancer	
ACT BW	ADJ WW
72	704
CALVING EASE	
★★★	



CED	BW	WW	YW	MILK	CEM	HP	ST	YG	CW	REA	MARB	FPI
15	-1.5	77	135	16	5	5	12	0.11	53	0.60	0.25	83.17
20%	25%	15%	3%	85%	75%	50%	80%	>95%	3%	50%	60%	20%

Complete herd sire prospect. Great phenotype and numbers with a calm disposition. Front pasture bull! Ranks in the top 1% PG 30 and top 3% YW.

LOTS 16-23 FLUSH BROTHERS

16 LEM COMMAND 0412 ET



REG: AMGV1493235 | DOB: 1/25/20 | TAT: 0412H | 6.3GV, 93.8AN,

EF COMMANDO 1366
BALDRIDGE COMMAND C036
BALDRIDGE BLACKBIRD A030
S A V RESOURCE 1441
MS RESOURCE 825 ET
MS CHARLO 505C ET

Homozygous Black Polled Balancer	
ACT BW	ADJ WW
82	734
CALVING EASE	
★★★	



CED	BW	WW	YW	MILK	CEM	HP	ST	YG	CW	REA	MARB	FPI
13	-1.7	78	131	21	4	3	12	0.17	52	0.44	0.61	92.58
40%	20%	15%	4%	40%	90%	75%	80%	>95%	4%	80%	4%	2%

Super heavy muscled and thick with good calving ease and growth. Ranks in the top 2% FPI, top 4% YW, and top 5% DOC. Top Dollar Angus Qualified.



LOT 16

17 LEM IRON MIKE 0414 ET



REG: AMGV1493237 | DOB: 1/27/20 | TAT: 0414H | 6.3GV, 93.8AN,

EF COMMANDO 1366
BALDRIDGE COMMAND C036
BALDRIDGE BLACKBIRD A030
S A V RESOURCE 1441
MS RESOURCE 825 ET
MS CHARLO 505C ET

Homozygous Black Polled Balancer	
ACT BW	ADJ WW
86	720
CALVING EASE	
★★★	



CED	BW	WW	YW	MILK	CEM	HP	ST	YG	CW	REA	MARB	FPI
14	-1.0	73	123	21	4	3	14	0.14	49	0.59	0.52	86.55
30%	35%	30%	10%	40%	90%	75%	55%	>95%	10%	55%	10%	10%

Iron Mike is as stout and full of muscle as you can make one. If you need to muscle up your cowherd and add growth, he can get the job done! Ranks in the top 10% YW, FPI. Top Dollar Angus Qualified.



LOT 17

18 LEM COMMAND 0413 ET



REG: AMGV1493236 | DOB: 1/26/20 | TAT: 0413H | 6.3GV, 93.8AN,

EF COMMANDO 1366
BALDRIDGE COMMAND C036
BALDRIDGE BLACKBIRD A030
S A V RESOURCE 1441
MS RESOURCE 825 ET
MS CHARLO 505C ET

Homozygous Black Polled Balancer	
ACT BW	ADJ WW
85	732
CALVING EASE	
★★	



CED	BW	WW	YW	MILK	CEM	HP	ST	YG	CW	REA	MARB	FPI
11	-0.5	82	137	21	2	3	12	0.15	57	0.63	0.58	92.35
70%	45%	10%	2%	40%	>95%	75%	80%	>95%	2%	45%	5%	3%

These Command sons from the 825 donor will sire great replacement heifers and high performance steers. Their donor dam is really long and deep with a great udder. Ranks in the top 2% YW, FPI and top 5% WW, Marb. Top Dollar Angus Qualified.



LOT 18

LOTS 16-23 FLUSH BROTHERS

REFERENCE PHOTO



SIRE OF LOT 19 **BALDRIDGE COMMAND C036**

19 LEM COMMAND 0416 ET

REG: AMGV1493239 | DOB: 1/26/20 | TAT: 0416H | 6.3GV, 93.8AN,

EF COMMANDO 1366
BALDRIDGE COMMAND C036
 BALDRIDGE BLACKBIRD A030
 S A V RESOURCE 1441
MS RESOURCE 825 ET
 MS CHARLO 505C ET

Homozygous Black Polled Balancer

ACT BW	ADJ WW
83	758

CALVING EASE
★★



CED	BW	WW	YW	MILK	CEM	HP	ST	YG	CW	REA	MARB	FPI
12	-1.6	78	130	21	3	3	9	0.07	49	0.70	0.55	90.73
55%	20%	15%	5%	40%	95%	75%	>95%	95%	10%	30%	10%	4%

Good looking, stout and long. Great phenotype and numbers. One of our favorites. Ranks in the top 4% FPI and top 5% YW. Top Dollar Angus Qualified.



LOT 20

20 LEM COMMAND 0415 ET

REG: AMGV1493238 | DOB: 1/28/20 | TAT: 0415H | 6.3GV, 93.8AN,

EF COMMANDO 1366
BALDRIDGE COMMAND C036
 BALDRIDGE BLACKBIRD A030
 S A V RESOURCE 1441
MS RESOURCE 825 ET
 MS CHARLO 505C ET

Homozygous Black Polled Balancer

ACT BW	ADJ WW
80	754

CALVING EASE
★★★



CED	BW	WW	YW	MILK	CEM	HP	ST	YG	CW	REA	MARB	FPI
15	-2.0	76	131	21	5	3	11	0.13	59	0.63	0.72	95.40
20%	15%	20%	4%	40%	75%	75%	90%	>95%	1%	45%	1%	1%

This bull will add performance and carcass to your calves while also boosting maternal traits with his top 20% Total Maternal. Balanced, complete bull with calving ease to boot! Ranks in the top 1% FPI, YW, Marb and top 4% YW. Top Dollar Angus Qualified.

21 LEM COMMAND 0417 ET

REG: AMGV1493240 | DOB: 1/23/20 | TAT: 0417H | 6.3GV, 93.8AN,

EF COMMANDO 1366
BALDRIDGE COMMAND C036
 BALDRIDGE BLACKBIRD A030
 S A V RESOURCE 1441
MS RESOURCE 825 ET
 MS CHARLO 505C ET

Homozygous Black Polled Balancer

ACT BW	ADJ WW
86	708

CALVING EASE
★★



CED	BW	WW	YW	MILK	CEM	HP	ST	YG	CW	REA	MARB	FPI
12	2.0	100	169	21	2	3	11	0.05	67	0.85	0.56	100.57
55%	95%	1%	1%	40%	>95%	75%	90%	95%	1%	10%	10%	1%

Tremendous individual. Few bulls can achieve top 1% WW, YW, Total Maternal, CW, and FPI numbers and still have the thickness and base width of this fella. Top Dollar Angus Qualified.

22 LEM COMMAND 0418 ET

REG: AMGV1493241 | DOB: 1/26/20 | TAT: 0418H | 6.3GV, 93.8AN,

EF COMMANDO 1366
BALDRIDGE COMMAND C036
 BALDRIDGE BLACKBIRD A030
 S A V RESOURCE 1441
MS RESOURCE 825 ET
 MS CHARLO 505C ET

Homozygous Black Polled Balancer

ACT BW	ADJ WW
81	748

CALVING EASE
★★★



CED	BW	WW	YW	MILK	CEM	HP	ST	YG	CW	REA	MARB	FPI
14	-0.8	78	135	21	4	3	11	0.06	58	0.75	0.50	89.90
30%	35%	15%	3%	40%	90%	75%	90%	95%	2%	20%	15%	5%

Top 1/3 calving ease with top of the breed growth and carcass in a sound, stout bull. Ranks in the top 3% YW and top 5% FPI. Top Dollar Angus Qualified.

BLACK BALANCER & HYBRID BULLS

23 LEM COMMAND 0438 ET

REG: AMGV1493251 | DOB: 1/21/20 | TAT: 0438H | 6.3GV, 93.8AN,

| EF COMMANDO 1366

BALDRIDGE COMMAND C036

| BALDRIDGE BLACKBIRD A030

| S A V RESOURCE 1441

MS RESOURCE 825 ET

| MS CHARLO 505C ET

Homozygous Black
Polled Balancer

ACT BW	ADJ WW
85	776

CALVING EASE

★

GENESEEEK
a Neogen Company

CED	BW	WW	YW	MILK	CEM	HP	ST	YG	CW	REA	MARB	FPI
10	1.7	96	170	21	2	3	9	0.04	73	0.88	0.45	95.67
80%	90%	1%	1%	40%	>95%	75%	>95%	95%	1%	10%	20%	1%

What a combination in this thick made bull. Top 1% WW, YW, CW, and FPI, while also having top 1% Total Maternal! Top Dollar Angus Qualified.



LOT 23

LOTS 24-26 FLUSH BROTHERS

24 LEM RENOWN 0420 ET

REG: AMGV1493243 | DOB: 1/22/20 | TAT: 0420H | 12.5GV, 87.5AN,

| RITO 707 OF IDEAL 3407 7075

S A V RENOWN 3439

| S A V BLACKCAP MAY 4136

| COLEMAN CHARLO 0256

MS CHARLO 502C ET

| MS GRID TOPPER 124Y ET

Homozygous Black
Polled Balancer

ACT BW	ADJ WW
80	767

CALVING EASE

★★

GENESEEEK
a Neogen Company

CED	BW	WW	YW	MILK	CEM	HP	ST	YG	CW	REA	MARB	FPI
9	-0.1	80	129	19	1	4	12	0.07	52	0.65	0.31	83.13
90%	55%	10%	5%	60%	>95%	60%	80%	95%	4%	40%	45%	20%

Long, stout & stout with performance. Will add growth and frame. Ranks in the top 4% CW, top 5% YW, top 10% WW, and top 20% FPI. Top Dollar Angus Qualified.



LOT 24

25 LEM RENOWN 0421 ET

REG: AMGV1493244 | DOB: 1/25/20 | TAT: 0421H | 12.5GV, 87.5AN,

| RITO 707 OF IDEAL 3407 7075

S A V RENOWN 3439

| S A V BLACKCAP MAY 4136

| COLEMAN CHARLO 0256

MS CHARLO 502C ET

| MS GRID TOPPER 124Y ET

Double Black
Polled Balancer

ACT BW	ADJ WW
87	752

CALVING EASE

★★

GENESEEEK
a Neogen Company

CED	BW	WW	YW	MILK	CEM	HP	ST	YG	CW	REA	MARB	FPI
7	-0.1	79	132	19	0	4	11	0.12	57	0.54	0.30	81.57
>95%	55%	10%	4%	60%	>95%	60%	90%	>95%	2%	60%	45%	30%

Stout made Renown son from a Charlo donor dam. Expect perfect uddered daughters and high performing sons. Ranks in the top 3% YW and top 10% WW. Top Dollar Angus Qualified.

26 LEM RENOWN 0419 ET

REG: AMGV1493242 | DOB: 1/26/20 | TAT: 0419H | 12.5GV, 87.5AN,

| RITO 707 OF IDEAL 3407 7075

S A V RENOWN 3439

| S A V BLACKCAP MAY 4136

| COLEMAN CHARLO 0256

MS CHARLO 502C ET

| MS GRID TOPPER 124Y ET

Homozygous Black
Polled Balancer

ACT BW	ADJ WW
86	796

CALVING EASE

★

GENESEEEK
a Neogen Company

CED	BW	WW	YW	MILK	CEM	HP	ST	YG	CW	REA	MARB	FPI
10	1.6	79	126	19	2	4	12	-0.01	42	0.65	0.20	78.20
80%	90%	10%	10%	60%	>95%	60%	80%	85%	20%	40%	70%	45%

High performance growth, just like his flush brothers in lot 24 and 25. Ranks in the top 10% WW, YW.

BLACK BALANCER & HYBRID BULLS

LOTS 27-28 FLUSH BROTHERS

27 LEM CAP 316 0424 ET



REG: AMGV1493247 | DOB: 1/24/20 | TAT: 0424H | 12.5GV, 87.5AN,

CONNEALY CAPITALIST 028

LD CAPITALIST 316

LD DIXIE ERICA 2053

S A V NET WORTH 4200

MS NET WORTH 341 A

MS FRONTIER 932W

Homozygous Black Polled Balancer	
ACT BW	ADJ WW
87	829
CALVING EASE	
★	



CED	BW	WW	YW	MILK	CEM	HP	ST	YG	CW	REA	MARB	FPI
12	1.8	91	151	22	9	1	13	0.11	66	0.78	0.45	92.34
55%	90%	1%	1%	30%	15%	90%	70%	>95%	1%	20%	20%	3%

Big time power and growth in this 316 son. From the 341 donor cow who also produced LEM DENSITY 564. If you need more pounds and performance in the right package, this is the bull for you. Ranks in the top 1% WW, YW, CW, top 2% FPI, top 15% MARB, and top 20% REA. Top Dollar Angus Qualified.



LOT 29

28 LEM CAP 316 0423 ET

REG: AMGV1493246 | DOB: 1/28/20 | TAT: 0423H | 12.5GV, 87.5AN,

CONNEALY CAPITALIST 028

LD CAPITALIST 316

LD DIXIE ERICA 2053

S A V NET WORTH 4200

MS NET WORTH 341 A

MS FRONTIER 932W

Double Black Polled Balancer	
ACT BW	ADJ WW
88	742
CALVING EASE	
★★	



CED	BW	WW	YW	MILK	CEM	HP	ST	YG	CW	REA	MARB	FPI
12	0.3	83	136	22	9	1	13	0.17	60	0.57	0.54	90.99
55%	65%	5%	3%	30%	15%	90%	70%	>95%	1%	55%	10%	4%

Solid made and free moving.

29 LEM RESOURCE 0422 ET



REG: AMGV1493245 | DOB: 1/20/20 | TAT: 0422H | 12.5GV, 87.5AN,

RITO 707 OF IDEAL 3407 7075

S A V RESOURCE 1441

S A V BLACKCAP MAY 4136

COLEMAN CHARLO 0256

MS CHARLO 503C ET

MS GRID TOPPER 124Y ET

Double Black Polled Balancer	
ACT BW	ADJ WW
87	706
CALVING EASE	
★★	



CED	BW	WW	YW	MILK	CEM	HP	ST	YG	CW	REA	MARB	FPI
11	0.3	70	120	17	1	2	11	-0.02	48	0.72	0.30	77.66
70%	65%	40%	15%	75%	>95%	85%	90%	80%	10%	25%	45%	50%

Stout made and well balanced. Ranks in the top 15% YW and top 25% REA. Top Dollar Angus Qualified.



LOT 30

30 LEM FLATTOP 0440



REG: AMGV1493253 | DOB: 1/12/20 | TAT: 0440H | 14.9GV, 84.4AN, 0.8AR

CONNEALY BLACK GRANITE

WERNER FLAT TOP 4136

WERNER LADY 0304

REPUTATION 550C ET

MS REPUTATION 807 ET

MS GRID TOPPER 124Y ET

Homozygous Black Polled Balancer	
ACT BW	ADJ WW
78	770
CALVING EASE	
★★★	



CED	BW	WW	YW	MILK	CEM	HP	ST	YG	CW	REA	MARB	FPI
16	-0.6	82	137	24	9	4	16	0.07	50	0.50	0.53	92.95
10%	40%	10%	2%	15%	15%	60%	25%	95%	5%	70%	10%	2%

Flat Top son from a Reputation cow. Shows great muscle and thickness, yet smooth with a lot of extension and great growth. Imagine what his feeder calves will look like in the sale ring. Ranks in the top 1/3 of breed for 10 EPDs and Indexes. Top Dollar Angus Qualified.

31 LEM FLATTOP 0441

REG: AMGV1493254 | DOB: 1/10/20 | TAT: 0441H | 14.9GV, 84.4AN, 0.8AR

CONNEALY BLACK GRANITE

WERNER FLAT TOP 4136

WERNER LADY 0304

REPUTATION 550C ET

MS REPUTATION 808 ET

MS GRID TOPPER 124Y ET

Homozygous Black
Polled Balancer

ACT BW	ADJ WW
72	746
CALVING EASE	
★★★★	



CED	BW	WW	YW	MILK	CEM	HP	ST	YG	CW	REA	MARB	FPI
18	-1.8	78	138	24	11	4	14	0.08	58	0.51	0.64	95.86
3%	20%	15%	2%	15%	2%	60%	55%	95%	2%	65%	3%	1%

Heifer bull with high performance, maternal and carcass traits. Ranks in the top 1% FPI, top 2% YW, top 3% CED, Marb, top 5% CEM, and top 20% BW. Top Dollar Angus Qualified.

32 LEM UP RIGHT 0442

REG: AMGV1493255 | DOB: 1/13/20 | TAT: 0442H | 17.2GV, 81.2AN, 1.7AR

CONNEALY CAPITALIST 028

UP RIGHT 653D ET

MS BLUESTEM 300 A ET

BALDRIDGE BRONC

MS BRONC 830 ET

MS NET WORTH 210 Z ET

Double Black
Polled Balancer

ACT BW	ADJ WW
76	784
CALVING EASE	
★★★★	



CED	BW	WW	YW	MILK	CEM	HP	ST	YG	CW	REA	MARB	FPI
18	-1.7	77	118	22	9	5	14	0.03	49	0.62	0.33	86.16
3%	20%	15%	15%	30%	15%	50%	55%	90%	10%	45%	40%	15%

Long made with extra muscle and calving ease. Ranks in the top 30% of the breed for 9 EPDs and indexes. Top Dollar Angus Qualified.

33 LEM RESOURCE 0437 ET

REG: AMGV1493264 | DOB: 1/11/20 | TAT: 0437H | 12.5GV, 87.5AN,

RITO 707 OF IDEAL 3407 7075

S A V RESOURCE 1441

S A V BLACKCAP MAY 4136

COLEMAN CHARLO 0256

MS CHARLO 505C ET

MS GRID TOPPER 124Y ET

Double Black
Polled Balancer

ACT BW	ADJ WW
90	751
CALVING EASE	
★	



CED	BW	WW	YW	MILK	CEM	HP	ST	YG	CW	REA	MARB	FPI
10	2.8	85	142	17	0	3	9	0.08	61	0.67	0.33	83.54
80%	>95%	3%	1%	75%	>95%	75%	>95%	95%	1%	35%	40%	20%

Top end growth and performance bull by Resource and from a powerful Charlo donor. Ranks in the top 1% YW, CW. Top Dollar Angus Qualified.



THINGS TO CONSIDER WHEN BUYING BULLS

1. Does your seedstock provider invest in DNA and Carcass Ultrasound testing to give you the most accurate information possible?
2. Does your seedstock provider supply all weights and data or just what they want you to see?
3. Does your seedstock provider assist in marketing your calves? Have they taken the time, effort and money it takes to build relationships & trust with feedlot managers and order buyers that have seen the extra value in your cattle.
4. Is your seedstock provider an invested Top Dollar Angus partner? If so, do their cattle actually qualify or just want that logo in the catalog somewhere to give the impression they do?
5. Does your seedstock provider still stand behind their cattle with guarantees & not charge extra for "warranty" coverage?
6. Does your seedstock provider invest heavily in Embryo Transfer & the latest technology to give you an advantage?



RED ANGUS BULLS

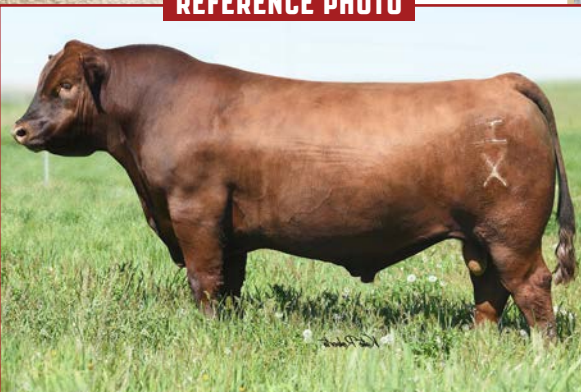


LOTS 34-38

FLUSH BROTHERS



LOT 34



REFERENCE PHOTO

SIRE OF LOTS 34-38 **HXC ALLEGIANCE 5502C**



LOT 35

34 LEM ALLEGIANCE 0431 ET

REG: 4329917 | DOB: 1/11/20 | TAT: 431 | 100% AR

LEACHMAN PLEDGE A282Z

HXC ALLEGIANCE 5502C

HXC 100Y

ANDRAS NEW DIRECTION R240

LEM MS DIRECT 840 ET

SIX MILE SIERA 655A

Category A Red Angus	
ACT BW	ADJ WW
81	714
CALVING EASE	
★	



CED	BW	WW	YW	MILK	CEM	HP	ST	YG	CW	REA	MARB	FAT
9	0.2	80	137	25	3	10	10	0.07	51	0.40	0.69	0.01
90%	85%	2%	1%	49%	97%	71%	94%	57%	1%	5%	5%	33%

PRO S	HERD	GRID
137	44	93
17%	94%	1%

Top end Red Angus sired by Allegiance that is well built and deep made. Outstanding data to go along with his great phenotype. Ranks in the top 1% Gridmaster, YW, ADG, top 2% WW, top 5% Marb, and top 17% Pro S.

35 LEM ALLEGIANCE 0430 ET

REG: 4329915 | DOB: 1/10/20 | TAT: 430 | 100% AR

LEACHMAN PLEDGE A282Z

HXC ALLEGIANCE 5502C

HXC 100Y

ANDRAS NEW DIRECTION R240

LEM MS DIRECT 840 ET

SIX MILE SIERA 655A

Category A Red Angus	
ACT BW	ADJ WW
78	687
CALVING EASE	
★	



CED	BW	WW	YW	MILK	CEM	HP	ST	YG	CW	REA	MARB	FAT
8	0.7	71	122	25	3	13	16	0.09	47	0.32	0.67	0.01
95%	90%	12%	5%	49%	98%	13%	38%	69%	1%	10%	6%	44%

PRO S	HERD	GRID
168	80	88
1%	44%	1%

Standout bull! Top of the breed performance and carcass. Well-built and free moving. Ranks in the top 1% Pro S, Gridmaster, top 3% ADG, top 5% YW, top 6% MARB and top 10% REA. Top Dollar Angus Qualified.

36 LEM ALLEGIANCE 0432 ET

REG: 4329919 | DOB: 1/12/20 | TAT: 432 | 100% AR



LEACHMAN PLEDGE A282Z

HXC ALLEGIANCE 5502C

HXC 100Y

ANDRAS NEW DIRECTION R240

LEM MS DIRECT 840 ET

SIX MILE SIERA 655A

Category A Red Angus	
ACT BW	ADJ WW
84	693
CALVING EASE	
★★★	



CED	BW	WW	YW	MILK	CEM	HP	ST	YG	CW	REA	MARB	FAT
12	-4.0	58	101	25	5	12	16	0.08	38	0.26	0.68	0.02
62%	14%	56%	37%	49%	83%	24%	43%	65%	5%	17%	5%	52%

PRO S	HERD	GRID
157	78	79
3%	47%	2%

Well balanced with good thickness. Ranks in the top 2% Gridmaster, top 3% Pro S, top 5% CW, MARB. Top Dollar Angus Qualified.



LOT 36

37 LEM ALLEGIANCE 0436 ET

REG: 4329923 | DOB: 1/14/20 | TAT: 436 | 100% AR



LEACHMAN PLEDGE A282Z

HXC ALLEGIANCE 5502C

HXC 100Y

ANDRAS NEW DIRECTION R240

LEM MS DIRECT 840 ET

SIX MILE SIERA 655A

Category A Red Angus	
ACT BW	ADJ WW
85	699
CALVING EASE	
★★	



CED	BW	WW	YW	MILK	CEM	HP	ST	YG	CW	REA	MARB	FAT
10	-2.0	66	119	25	4	12	14	0.11	40	0.22	0.72	0.02
83%	46%	25%	7%	49%	93%	26%	71%	81%	3%	22%	3%	64%

PRO S	HERD	GRID
155	66	89
4%	73%	1%

Lots of thickness with style and very clean made. Ranks in the top 1% Gridmaster, ADG, top 3% CW, MARB, top 4% Pro S, and top 7% YW. Top Dollar Angus Qualified.



LOT 37

38 LEM ALLEGIANCE 0433 ET

REG: 4329921 | DOB: 1/13/20 | TAT: 433 | 100% AR



LEACHMAN PLEDGE A282Z

HXC ALLEGIANCE 5502C

HXC 100Y

ANDRAS NEW DIRECTION R240

LEM MS DIRECT 840 ET

SIX MILE SIERA 655A

Category A Red Angus	
ACT BW	ADJ WW
81	691
CALVING EASE	
★	



CED	BW	WW	YW	MILK	CEM	HP	ST	YG	CW	REA	MARB	FAT
7	1.5	74	130	25	2	12	13	0.03	44	0.30	0.70	-0.01
97%	95%	7%	2%	49%	98%	30%	79%	33%	2%	12%	4%	10%

PRO S	HERD	GRID
151	57	93
6%	85%	1%

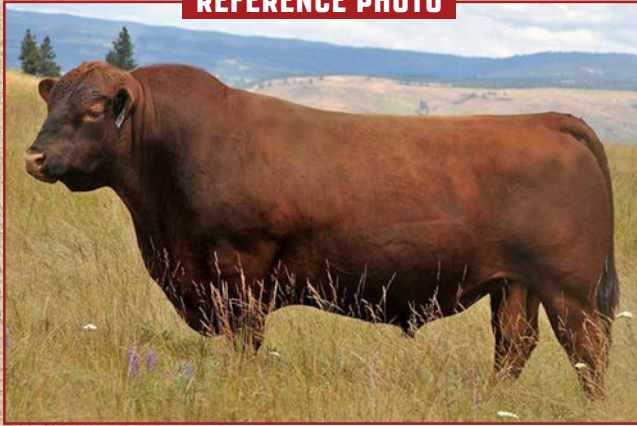
Good performance and data. Ranks in the top 1% Gridmaster, ADG, top 2% YW, CW, top 4% MARB, top 6% Pro S, top 7% WW, and top 12% REA. Top Dollar Angus Qualified.



Many thanks to Pope Embryo Transfer. We've worked together for many years!

LOTS 39-41 FLUSH BROTHERS

REFERENCE PHOTO



SIRE OF LOT 39 **RREDS SENECA 731C**

39 LEM SENECA 0434 ET

REG: 4329949 | DOB: 1/18/20 | TAT: 434 | 100% AR

BIEBER ROLLIN DEEP Y118
RREDS SENECA 731C
 RREDS ASTER 309A
 ANDRAS NEW DIRECTION R240
LEM MS DIRECT 838 ET
 SIX MILE SIERA 655A

Category A Red Angus	
ACT BW	ADJ WW
76	715
CALVING EASE	
★★★	



CED	BW	WW	YW	MILK	CEM	HP	ST	YG	CW	REA	MARB	FAT
13	-3.3	70	120	20	6	10	16	0.10	30	0.27	0.35	0.04
36%	22%	13%	7%	91%	68%	60%	38%	74%	17%	15%	60%	91%

PRO S	HERD	GRID
134	86	48
21%	29%	31%

Cherry red Seneca son with good performance and length. Ranks in the top 4% ADG, top 7% YW and top 15% REA. Top Dollar Angus Qualified.



LOT 40

40 LEM ONE KIND 0428 ET

REG: 4329935 | DOB: 1/10/20 | TAT: 428 | 100% AR

BUF CRK THE RIGHT KIND U199
PIE ONE OF A KIND 352
 PIE FAYETTE 1160
 ANDRAS NEW DIRECTION R240
LEM MS DIRECT 841 ET
 SIX MILE SIERA 655A

Category A Red Angus	
ACT BW	ADJ WW
74	692
CALVING EASE	
★★	



CED	BW	WW	YW	MILK	CEM	HP	ST	YG	CW	REA	MARB	FAT
12	-1.6	79	133	21	8	17	8	0.20	49	0.14	0.26	0.03
64%	54%	2%	1%	87%	29%	1%	98%	98%	1%	39%	82%	82%

PRO S	HERD	GRID
111	60	51
58%	82%	25%

One of a Kind son from a New Direction daughter with top of the breed performance and growth. Ranks in the top 1% YW, ADG, HPG, CW and top 2% WW.



LOT 41

41 LEM ONE KIND 0429 ET

REG: 4329947 | DOB: 1/16/20 | TAT: 429 | 100% AR

BUF CRK THE RIGHT KIND U199
PIE ONE OF A KIND 352
 PIE FAYETTE 1160
 ANDRAS NEW DIRECTION R240
LEM MS DIRECT 841 ET
 SIX MILE SIERA 655A

Category A Red Angus	
ACT BW	ADJ WW
71	713
CALVING EASE	
★★★	



CED	BW	WW	YW	MILK	CEM	HP	ST	YG	CW	REA	MARB	FAT
14	-2.4	72	121	21	9	17	12	0.03	42	0.48	0.15	0.02
34%	38%	10%	6%	87%	13%	1%	86%	35%	2%	3%	97%	56%

PRO S	HERD	GRID
120	79	42
42%	46%	44%

Thick, deep, and soggy made One of a Kind made. He'll sire steers with lots of grow. Ranks in the top 1% HPG, top 2% CW, top 3% REA, top 5% ADG, top 6% YW, and top 10% WW.

42 LEM FUSION 0435

REG: 4329951 | DOB: 1/15/20 | TAT: 435 | 100% AR

ANDRAS IN FOCUS B175

ANDRAS FUSION R236

ANDRAS BELLE B167

ANDRAS NEW DIRECTION R240

LEM MS DIRECT 834 ET

SIX MILE SIERA 655A

Category A Red Angus	
ACT BW	ADJ WW
74	696
CALVING EASE	
★★	



LOT 42

CED	BW	WW	YW	MILK	CEM	HP	ST	YG	CW	REA	MARB	FAT
13	-0.8	69	123	20	8	13	12	0.20	42	-0.06	0.64	0.02
45%	70%	16%	5%	88%	33%	15%	83%	99%	2%	84%	8%	56%

PRO S	HERD	GRID
169	83	86
1%	36%	1%

Cherry red, extra deep and stout. Great extension and length. Ranks in the top 1% Pro S, Gridmaster, ADG, top 2% CW, top 5% YW and top 8% MARB. Top Dollar Angus Qualified.

43 LEM FRANCHISE 0455

REG: 4333145 | DOB: 1/25/20 | TAT: 455 | 100% AR

SPUR FRANCHISE OF GARTON

9 MILE FRANCHISE 6305

C-BAR ABIGRACE Y11

PIE THE COWBOY KIND 343

LEM MS COWKIND 867 ET

HXC 372A

Category A Red Angus	
ACT BW	ADJ WW
69	770
CALVING EASE	
★★★★	



LOT 43

CED	BW	WW	YW	MILK	CEM	HP	ST	YG	CW	REA	MARB	FAT
15	-3.3	69	126	30	9	13	12	0.11	40	0.33	0.65	0.04
22%	22%	16%	3%	11%	16%	17%	82%	81%	3%	9%	7%	88%

PRO S	HERD	GRID
157	70	87
4%	66%	1%

Heifer bull sire by the popular Select Sires bull, 9 Mile Franchise. Use on first calf heifers with confidence. Ranks in the top 1% Gridmaster, ADG, top 3% YW, CW, top 4% Pro S, top 7% MARB and top 9% REA. Top Dollar Angus Qualified.

44 LEM LEGEND 0456

REG: 4333131 | DOB: 2/1/20 | TAT: 456 | 96.9% AR 3.1% XX

BROWN BLW LEGEND A1965

ALC MR LEGEND F49

ALC MISS KING B417

ANDRAS NEW DIRECTION R240

LEM MS NEW DIRECTION 707

LEM MS CONQUEST 014

Category B Red Angus	
ACT BW	ADJ WW
70	713
CALVING EASE	
★★★★	



MATERNAL GRAND DAM OF LOT 43 HXC 372A

CED	BW	WW	YW	MILK	CEM	HP	ST	YG	CW	REA	MARB	FAT
16	-5.1	47	73	24	8	14	15	0.04	11	0.07	0.43	0.02
10%	5%	87%	88%	61%	25%	10%	49%	41%	82%	56%	42%	64%

PRO S	HERD	GRID
114	85	28
53%	30%	73%

Heifer bull and will sire good replacement heifers. Ranks in the top 5% BW and top 10% CED, HPG.

RED ANGUS BULLS



LOT 45

45 LEM LEGEND 0457

REG: 4333109 | DOB: 2/27/20 | TAT: 457 | 96.9% AR 3.1% XX

BROWN BLW LEGEND A1965
 ALC MR LEGEND F49
 ALC MISS KING B417
 HXC IRON ORE 4429B
 LEM IRON ORE 602
 LEM MISS RED ALERT 349

Category B Red Angus	
ACT BW	ADJ WW
72	699
CALVING EASE	
★★★★	



CED	BW	WW	YW	MILK	CEM	HP	ST	YG	CW	REA	MARB	FAT
16	-4.1	53	82	26	8	13	16	0.20	17	-0.03	0.41	0.06
12%	13%	73%	76%	40%	32%	21%	46%	99%	65%	79%	45%	99%

PRO S 109 | **HERD** 83 | **GRID** 25
 Sleep all night heifer bull with thickness. Ranks in the top 12% CED and top 13% BW.

47 LEM THUNDER 0458

REG: AMGV1494446 | DOB: 2/17/20 | TAT: 0458H | 25GV, 75AR,

ANDRAS THUNDER R225
 HXC 5550C
 HXC 178Y
 RED SIX MILE RUGER 221X
 MISS RUGER 402B
 635

Red Polled Balancer	
ACT BW	ADJ WW
90	736
CALVING EASE	
★★	



CED	BW	WW	YW	MILK	CEM	HP	ST	YG	CW	REA	MARB	FPI
11	-0.2	61	97	21	5	-2	12	-0.16	23	0.65	0.36	74.37
75%	55%	85%	75%	35%	80%	>95%	80%	20%	90%	25%	45%	80%

Growthy, thick made Balancer.

46 LEM LEGEND 0470

REG: 4333111 | DOB: 2/29/20 | TAT: 470 | 87.5% AR 4.7% SM 1.6% HP 6.2% XX

BROWN BLW LEGEND A1965
 ALC MR LEGEND F49
 ALC MISS KING B417
 C-BAR-RJ LEGACY A10
 LEM LEGACY 603
 MS BUSTER 019

Category B Red Angus	
ACT BW	ADJ WW
78	720
CALVING EASE	
★★★	



CED	BW	WW	YW	MILK	CEM	HP	ST	YG	CW	REA	MARB	FAT
12	-2.8	56	90	23	7	12	15	0.03	13	0.03	0.33	0.01
52%	31%	63%	61%	69%	55%	38%	59%	32%	76%	65%	64%	27%

PRO S 104 | **HERD** 74 | **GRID** 30
 69% 56% 70%



LOT 48

48 LEM CINCH 0459

REG: 4333095 | DOB: 2/18/20 | TAT: 459 | 87.5% AR 12.5% XX

LSF SAGA 1040Y
 PIE CINCH 4126
 TKP BONNE BEL 110
 HXC 0116X
 LEM MISS 324
 MS 901

Category B Red Angus	
ACT BW	ADJ WW
78	688
CALVING EASE	
★★★	



CED	BW	WW	YW	MILK	CEM	HP	ST	YG	CW	REA	MARB	FAT
14	-1.7	76	124	22	6	9	12	0.03	37	0.33	0.36	0.01
32%	52%	4%	4%	75%	62%	87%	86%	34%	6%	9%	58%	31%

PRO S 124 | **HERD** 62 | **GRID** 62
 Cinch son with extra style and thickness. From a proven, perfect uddered cow that's raised several herd bulls in the past. Ranks in the top 4% WW, YW, top 6% CW, top 7% ADG, top 9% REA and top 10% Gridmaster. Top Dollar Angus Qualified.

49 LEM BOXED BEEF 0466

REG: 4333119 | DOB: 2/24/20 | TAT: 466 | 100% AR

LSF BOXED BEEF 9063W

POKE BOXED BEEF 1167 6157

HLH MS TR EPIC618 5002 1167

BROWN JYJ REDEMPTION Y1334

LEM REDEMPTION 610 ET

SIX MILE SIERA 655A

Category A Red Angus	
ACT BW	ADJ WW
84	703
CALVING EASE	
★★	



CED	BW	WW	YW	MILK	CEM	HP	ST	YG	CW	REA	MARB	FAT
10	-1.3	69	119	23	6	9	15	-0.03	23	0.30	0.25	0.00
84%	59%	15%	7%	70%	72%	88%	60%	10%	40%	12%	84%	21%

PRO S	HERD	GRID	
114	73	41	Ranks in the top 4% ADG, top 7% YW and top 12% REA.
52%	59%	46%	



MATERNAL GRAND DAM OF LOT 49 SIX MILE SIERA 655A

50 LEM THUNDER 0471

REG: COMMERCIAL | DOB: | TAT: 471

ANDRAS THUNDER R225

HXC 5550C

HXC 178Y

HXC CONQUEST

227

Category A Red Angus	
ACT BW	ADJ WW
81	705
CALVING EASE	
★★	



CED	BW	WW	YW	MILK	CEM	HP	ST	YG	CW	REA	MARB	FAT
17	-4.3	57	94	24	6	9	13	0.05	9	0.19	0.40	0.03
%	%	%	%	%	%	%	%	%	%	%	%	%

PRO S	HERD	GRID	
98	57	41	Long, thick, and square made. From a top commercial cow who raises a top calf every year. Sells as commercial.
%	%	%	



LOT 50

(EPDs derived from averaging sire and maternal grandsire EPDs.)

51 LEM LEGEND 0472

REG: COMMERCIAL | DOB: | TAT: 472

BROWN BLW LEGEND A1965

ALC MR LEGEND F49

ALC MISS KING B417

TPIE ATLANTIC 8257

726

Category A Red Angus	
ACT BW	ADJ WW
89	730
CALVING EASE	
★	



CED	BW	WW	YW	MILK	CEM	HP	ST	YG	CW	REA	MARB	FAT
10	-0.9	54	85	24	12	5	14	0.06	11	0.09	0.38	0.01
%	%	%	%	%	%	%	%	%	%	%	%	%

PRO S	HERD	GRID	
98	68	29	Top muscle, length, and thickness in a well built, balanced bull. From the top producing 726 commercial cow, who always raises a top calf. Sells as commercial.
%	%	%	



LOT 51

(EPDs derived from averaging sire and maternal grandsire EPDs.)

BLACK BALANCER & HYBRID BULLS



LOT 53

52 LEM RANSOM 0449

REG: AMGV1493708 | DOB: 3/13/20 | TAT: 0449H | 18.8GV, 81.3AN,

| S A V RESOURCE 1441

RANSOM 777 ET

| MS MIDLAND 823U

| CONNEALY CAPITALIST 028

MS CAPITALIST 710 ET

| MS NET WORTH 417B ET

Homozygous Black
Polled Balancer

ACT BW	ADJ WW
82	743
CALVING EASE	
★★	

GENESEEEK
a Neogen[®] Company

CED	BW	WW	YW	MILK	CEM	HP	ST	YG	CW	REA	MARB	FPI
10	0.3	76	123	18	4	6	17	0.16	54	0.51	0.30	79.74
80%	65%	20%	10%	70%	90%	35%	15%	>95%	3%	65%	45%	35%

Ransom 0449 will sire calves with that extra punch of growth. His maternal grand dam, '417,' is a tremendous brood cow that weans a calf near the top every year.

53 LEM BANK NOTE 0448

REG: AMGV1493707 | DOB: 2/1/20 | TAT: 0448H | 12.5GV, 87.5AN,

| CONNEALY EARNAN 076E

BROOKING BANK NOTE 4040

| E A ROSE 918

| S A V NET WORTH 4200

QUEEN 405B

| MS MIDLAND 823U

Homozygous Black
Polled Balancer

ACT BW	ADJ WW
86	782
CALVING EASE	
★	

GENESEEEK
a Neogen[®] Company

CED	BW	WW	YW	MILK	CEM	HP	ST	YG	CW	REA	MARB	FPI
10	1.3	91	142	14	7	6	13	0.09	54	0.48	0.52	92.63
80%	85%	1%	1%	95%	40%	35%	70%	>95%	3%	70%	10%	2%

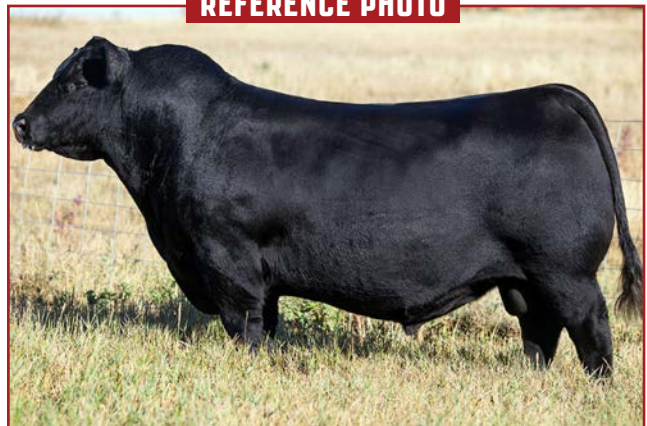
Top end performance from both sides of pedigree. Bank Note son from Net Worth daughter equals pounds in the right package. Ranks in the top 1% WW, YW, top 2% FPI, and top 10% Marb.

REFERENCE PHOTO



SIRE OF LOT 52 LEM RANSOM 777 ET

REFERENCE PHOTO



SIRE OF LOT 53 BROOKING BANK NOTE 4040

54 LEM RENOWN 0451

REG: AMGV1493709 | DOB: 2/3/20 | TAT: 0451H | 9.4GV, 86.7AN, 3.9AR

| RITO 707 OF IDEAL 3407 7075

S A V RENOWN 3439

| S A V BLACKCAP MAY 4136

| CONNEALY CAPITALIST 028

MS CAPITALIST 700

| MS IRON MOUNTAIN 308 A

Double Black
Polled Balancer

ACT BW	ADJ WW
86	717
CALVING EASE	
★	



CED	BW	WW	YW	MILK	CEM	HP	ST	YG	CW	REA	MARB	FPI
10	0.3	78	123	16	4	8	14	0.1	45	0.46	0.22	78.57
80%	65%	15%	10%	85%	90%	20%	55%	>95%	10%	75%	65%	45%

Stout made with style. Small headed and clean made just like his neat uddered dam. Great maternal and growth. Ranks in the top 10% YW and top 20% WW.

55 LEM RANSOM 0452

REG: AMGV1493847 | DOB: 2/29/20 | TAT: 0452H | 25GV, 75AN,

| S A V RESOURCE 1441

RANSOM 777 ET

| MS MIDLAND 823U

| COLEMAN CHARLO 0256

MS CHARLO 503C ET

| MS GRID TOPPER 124Y ET

Double Black
Polled Balancer

ACT BW	ADJ WW
89	783
CALVING EASE	
★★	



CED	BW	WW	YW	MILK	CEM	HP	ST	YG	CW	REA	MARB	FPI
12	0.4	74	124	18	3	3	12	0.05	47	0.65	0.34	80.78
60%	70%	30%	15%	65%	>95%	70%	80%	90%	15%	25%	50%	45%

Nicely balanced young bull sired by Ransom and from a perfect uddered Charlo daughter. Ranks in the top 15% YW.

56 LEM LOADED 0444

REG: AMGV1493706 | DOB: 2/28/20 | TAT: 0444H | 14.1GV, 59.4AN, 20.3AR

| DENSITY 564C ET

LOADED 764 ET

| MS 031X

| LEM RED ALERT 182

MS BLACK ALERT 338 A

| MS 303 139Y

Homozygous Black
Polled Balancer

ACT BW	ADJ WW
86	723
CALVING EASE	
★★★	



CED	BW	WW	YW	MILK	CEM	HP	ST	YG	CW	REA	MARB	FPI
15	-0.7	63	99	23	8	2	16	0.09	34	0.29	0.47	79.15
20%	40%	75%	60%	25%	25%	85%	25%	>95%	40%	95%	15%	40%

Balanced numbered and clean made. His seven-year-old dam is a heavy producer out of a nice tight udder.

57 LEM RANSOM 0454

REG: AMGV1493996 | DOB: 3/1/20 | TAT: 0454H | 25GV, 62.5AN, 12.5AR

| S A V RESOURCE 1441

RANSOM 777 ET

| MS MIDLAND 823U

| S A V NET WORTH 4200

MS BUSTER WORTH 419B ET

| MS BUSTER BO 737T

Double Black
Polled Balancer

ACT BW	ADJ WW
89	723
CALVING EASE	
★★	



CED	BW	WW	YW	MILK	CEM	HP	ST	YG	CW	REA	MARB	FPI
13	0.3	65	103	19	6	2	14	0.06	40	0.55	0.36	75.72
45%	70%	70%	60%	55%	65%	85%	50%	95%	30%	45%	45%	75%

Young balancer with Resource and Net Worth as his grand sires. Balanced numbers as well.

58 LEM LOADED 0450

REG: AMGV1493846 | DOB: 3/8/20 | TAT: 0450H | 21.9GV, 78.1AN,

| DENSITY 564C ET

LOADED 764 ET

| MS 031X

| COLEMAN CHARLO 0256

MS CHARLO 502C ET

| MS GRID TOPPER 124Y ET

Homozygous Black
Polled Balancer

ACT BW	ADJ WW
82	738
CALVING EASE	
★★	



CED	BW	WW	YW	MILK	CEM	HP	ST	YG	CW	REA	MARB	FPI
14	0.2	72	112	22	4	3	12	0.08	30	0.27	0.38	80.65
30%	60%	35%	30%	30%	90%	75%	80%	95%	60%	95%	30%	35%

This is a younger March born bull with high-end, balanced numbers. Ranks in the top 1/3 of the breed for 8 EPDs and indexes.

REFERENCE PHOTO



MATERNAL GRAND SIRE OF LOT 58 COLEMAN CHARLO 0256

BLACK BALANCER & HYBRID BULLS

REFERENCE PHOTO



MATERNAL GREAT GRAND DAM OF LOT 59 **BALDRIDGE ISABEL Y69**

59 LEM BOARDWALK 0445

REG: AMGV1497361 | DOB: 2/14/20 | TAT: 0445H | 2.4GV, 96.9AN, 0.8AR

ELLINGSON BOARDWALK 3032
ELLINGSON BOARDWALK 7914
 CFL PROV ID 2061
 BALDRIDGE BRONC
MS BRONC 896
 MS RESOURCE 626D ET

Double Black Polled Balancer	
ACT BW	ADJ WW
80	707
CALVING EASE	
★★★	



CED	BW	WW	YW	MILK	CEM	HP	ST	YG	CW	REA	MARB	FPI
14	-1.2	72	113	17	7	2	12	0.2	30	0.26	0.42	82.60
30%	30%	35%	25%	75%	40%	85%	80%	>95%	60%	95%	25%	25%

Young bull that will sire tremendous maternal, deep bodied, pay-the-bills kind of females. Steermates will grow and gain well with his top 25% YW. Ranks in the top 1/3 of the breed for 7 EPDs and Indexes.

60 LEM LOADED 0443

REG: AMGV1493705 | DOB: 3/9/20 | TAT: 0443H | 34.4GV, 65.6AN,

DENSITY 564C ET
LOADED 764 ET
 MS 031X
 S A V NET WORTH 4200
MS NET WORTH 210 Z ET
 MISS 546R

Homozygous Black Polled Balancer	
ACT BW	ADJ WW
92	718
CALVING EASE	
★	



CED	BW	WW	YW	MILK	CEM	HP	ST	YG	CW	REA	MARB	FPI
11	1.6	63	101	22	5	2	14	-0.13	34	0.67	0.02	65.02
75%	90%	80%	65%	30%	80%	85%	50%	25%	50%	20%	>95%	>95%

Homozygous black young bull from a powerful Net Worth daughter that ranks in the top 20% REA.

61 LEM LOADED 0453

REG: AMGV1493710 | DOB: 3/2/20 | TAT: 0453H | 34.4GV, 65.6AN,

DENSITY 564C ET
LOADED 764 ET
 MS 031X
 MR GOLDRUSH U303
MISS 401B
 MISS 555R

Double Black Polled Balancer	
ACT BW	ADJ WW
80	768
CALVING EASE	
★★★	



CED	BW	WW	YW	MILK	CEM	HP	ST	YG	CW	REA	MARB	FPI	
16	-2.4	55	84	22	8	4	14	0.03	33	0.38	0.37	73.80	
15%	15%	95%	95%	30%	30%	60%	>95%	50%	85%	55%	80%	45%	85%

This black Balancer bull has good calving ease from a great looking cow with a perfect udder.

REFERENCE PHOTO



DAM OF LOT 62 **LEM BRILLIANCE 140Y**

62 LEM LOADED 0464

REG: AMGV1493713 | DOB: 3/8/20 | TAT: 0464H | 34.4GV, 65.6AN,

DENSITY 564C ET
LOADED 764 ET
 MS 031X
 S A V BRILLIANCE 8077
BRILLIANCE 140Y
 MISS 546R

Double Black Polled Balancer	
ACT BW	ADJ WW
88	714
CALVING EASE	
★★	



CED	BW	WW	YW	MILK	CEM	HP	ST	YG	CW	REA	MARB	FPI
13	0.6	61	95	21	6	3	14	-0.04	31	0.50	0.18	68.86
45%	75%	85%	80%	35%	65%	70%	50%	65%	65%	55%	90%	>95%

Young black Balancer with great feet and structure. Taylor led his dam to champion banners three years in a row at the Webster County Fair, including 2011 Champion Stocker/Feeder Heifer, 2012 Champion Continental Breeding Heifer, and 2013 Champion Cow/Calf Pair.

BLACK BALANCER & HYBRID BULLS

63 LEM RANSOM 0465

REG: AMGV1493845 | DOB: 2/28/20 | TAT: 0465H | 25GV, 75AN,

S A V RESOURCE 1441

RANSOM 777 ET

MS MIDLAND 823U

CONNEALY CAPITALIST 028

MS CAP 621D ET

MS MIDLAND 823U

Homozygous Black
Polled Balancer

ACT BW	ADJ WW
88	731

CALVING EASE

★★

GENESEEEK
a Neogen[®] Company

CED	BW	WW	YW	MILK	CEM	HP	ST	YG	CW	REA	MARB	FPI
12	1.0	78	121	17	5	4	15	0.08	40	0.49	0.36	82.05
60%	80%	15%	20%	75%	80%	60%	35%	95%	30%	55%	45%	35%

Homozygous black Balancer with lots of growth from a beautiful Capitalist daughter. Ranks in the top 15% WW,YW.



REFERENCE PHOTO

MATERNAL GRAND SIRE OF LOT 64 CONNEALY CAPITALIST 028

64 LEM RANSOM 0460

REG: AMGV1499394 | DOB: 3/13/20 | TAT: 0460H | 21.9GV, 75AN, 3.1AR

S A V RESOURCE 1441

RANSOM 777 ET

MS MIDLAND 823U

CONNEALY CAPITALIST 028

MS CAPITAL 715 ET

MS FRONTIER 039X ET

Double Black
Polled Balancer

ACT BW	ADJ WW
81	716

CALVING EASE

★★★

GENESEEEK
a Neogen[®] Company

CED	BW	WW	YW	MILK	CEM	HP	ST	YG	CW	REA	MARB	FPI
14	-0.8	72	115	17	6	6	14	0.08	41	0.43	0.37	81.57
30%	35%	35%	20%	75%	60%	35%	55%	95%	20%	80%	30%	30%

Natural calf from the 715 donor cow and a maternal brother to Lots 13,14,15. 715 is a model of a cow. Ranks in the top 1/3 of the breed for 10 EPDs.

LEMKE CATTLE
15TH annual
BULL & HEIFER SALE
FRIDAY, FEBRUARY 12, 2021
1:30 PM | LEMKE SALE FACILITY | LAWRENCE, NE

ANGUS BULLS

65 LEM BOARDWALK 0446

REG: 19922194 | DOB: 3/6/20 | TAT: 0446 | 100% AN

Ellingson Boardwalk 3032

Ellingson Boardwalk 7914

CFL Prov Id 2061

E&b Impression 380

Lem MS Impression 512

E&b Lady Just in Time 236

100% ANGUS

ACT BW	ADJ WW
80	663

CALVING EASE

★★★★

GENESEEEK
a Neogen[®] Company

CED	BW	WW	YW	MILK	CEM	SEN	CW	MARB	RE	FAT
10	-0.2	46	71	21	10	12				
20%	20%	85%	95%	80%	35%	4%	%	%	%	%
\$M	\$W	\$F	\$G	\$B	\$C					
71	47	57								
20%	75%	95%	%	%	%					

Angus heifer bull! Sired by our Boardwalk herd bull. I have been pleased with how easy his calves come and how they grow.

66 LEM BOARDWALK 0447

REG: 19922195 | DOB: 2/29/20 | TAT: 0447 | 100% AN

Ellingson Boardwalk 3032

Ellingson Boardwalk 7914

CFL Prov Id 2061

Salt Creek Bob 7003

Summitcrest Blackbird 0Y29

Summitcrest Blackbird 2P68

100% ANGUS

ACT BW	ADJ WW
82	656

CALVING EASE

★★★

GENESEEEK
a Neogen[®] Company

CED	BW	WW	YW	MILK	CEM	SEN	CW	MARB	RE	FAT
7	0.8	47	70	24	9	9	25	0.44	0.44	0.056
45%	40%	80%	95%	60%	45%	10%	90%	65%	70%	95%
\$M	\$W	\$F	\$G	\$B	\$C					
67	53	65	37	101	198					
30%	60%	90%	70%	90%	90%					

Angus heifer bull! Great foot structure and from a really nice uddered, deep bodied Angus brood cow.

SELLING THREE TOP BALANCER OPEN HEIFERS!

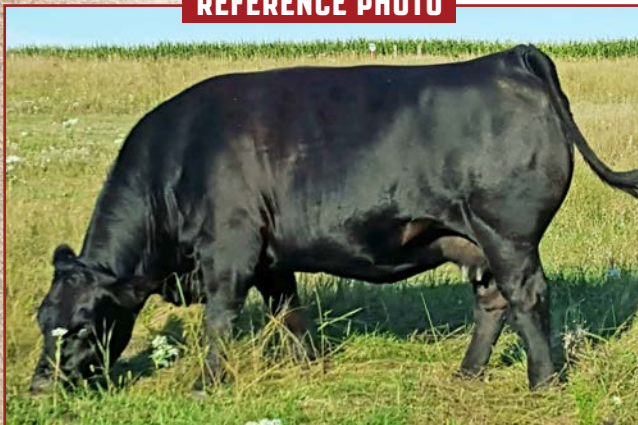
Selling all three of these 2020 born heifers from the top of our replacements.
All are potential future donors!

REFERENCE PHOTO



MATERNAL SISTER TO THE DAM OF LOTS 67-68 **LEM MS STUNNER 952 ET**

REFERENCE PHOTO



MATERNAL GRAND DAM OF LOTS 67-68 **MS BLUESTEM 300 A ET**

67 LEM MS 316 050

REG: AMGV1499514 | DOB: 1/10/20 | TAT: 050H | 4.7GV, 93.7AN, 1.7AR

| CONNEALY CAPITALIST 028

LD CAPITALIST 316

| LD DIXIE ERICA 2053

| S A V RESOURCE 1441

MS RESOURCE 820 ET

| MS BLUESTEM 300 A ET

Double Black
Polled Balancer

ACT BW	ADJ WW
79	634



CED	BW	WW	YW	MILK	CEM	HP	ST	YG	CW	REA	MARB	FPI
14	-1.3	84	136	19	8	2	11	0.18	56	0.48	0.44	90.91
30%	25%	4%	3%	60%	25%	85%	90%	>95%	2%	70%	20%	4%

Great opportunity to own a genetic gem from the proven 300 cow family. 050 combines calving ease, performance, carcass and maternal at the very top. We can't keep them all, so help yourself! Ranks in the top 1/3 of the breed for 11 EPDs and indexes.

68 LEM MS COMMAND 051

REG: AMGV1499515 | DOB: 1/11/20 | TAT: 051H | 4.7GV, 93.65AN, 1.65AR

| EF COMMANDO 1366

BALDRIDGE COMMAND C036

| BALDRIDGE BLACKBIRD A030

| S A V RESOURCE 1441

MS RESOURCE 822 ET

| MS BLUESTEM 300 A ET

Double Black
Polled Balancer

ACT BW	ADJ WW
74	614



CED	BW	WW	YW	MILK	CEM	HP	ST	YG	CW	REA	MARB	FPI
14	-0.5	84	137	22	6	3	12	0.14	58	0.54	0.57	93.79
30%	45%	4%	2%	30%	60%	75%	80%	>95%	2%	60%	10%	2%

Another gem from the 300 cow family. Phenotype and numbers that breeders dream of. Pay the bills kind of heifers from a real world, no nonsense, proven cow family. Maternal sister to lots 6, 7, and 8. Ranks in the top 1/3 of the breed for 11 EPDs and indexes.

69 LEM MS RANSOM 053

REG: AMGV1499535 | DOB: 2/10/20 | TAT: 053H | 21.1GV, 77.9AN, 1AR

| S A V RESOURCE 1441

RANSOM 777 ET

| MS MIDLAND 823U

| RIGHT KIND 459B

MS RIGHT KIND 6405D

| QUEEN 405B

Double Black
Polled Balancer

ACT BW	ADJ WW
78	640



CED	BW	WW	YW	MILK	CEM	HP	ST	YG	CW	REA	MARB	FPI
12	-0.1	73	118	19	6	6	13	0.11	45	0.45	0.51	84.56
55%	55%	30%	15%	60%	60%	35%	70%	>95%	10%	75%	10%	15%

Royal pedigree and it shows. Combines power and elegance in a super deep bodied future donor with a bright future.

40 COMMERCIAL RED ANGUS OPEN HEIFERS!

We are again offering fancy certified Red Angus commercial open heifers. All home raised and from the heart of our commercial herd. All heifers have been on a complete vaccination program, including bangs, poured, and pelvic examined. Heifers enter the sale ring in groups of five. Buyer may choose one or more of the group and has the option to roll the entire group of 5 and so on with each group.

**COMMERCIAL HEIFERS SELL IN GROUPS OF 5 WITH WINNING BIDDER
HAVING THE OPTION TO TAKE ONE OR MORE HEIFERS IN THAT GROUP!**

LOTS 75-79

LOTS 80-84

LOTS 85-89

LOTS 90-94

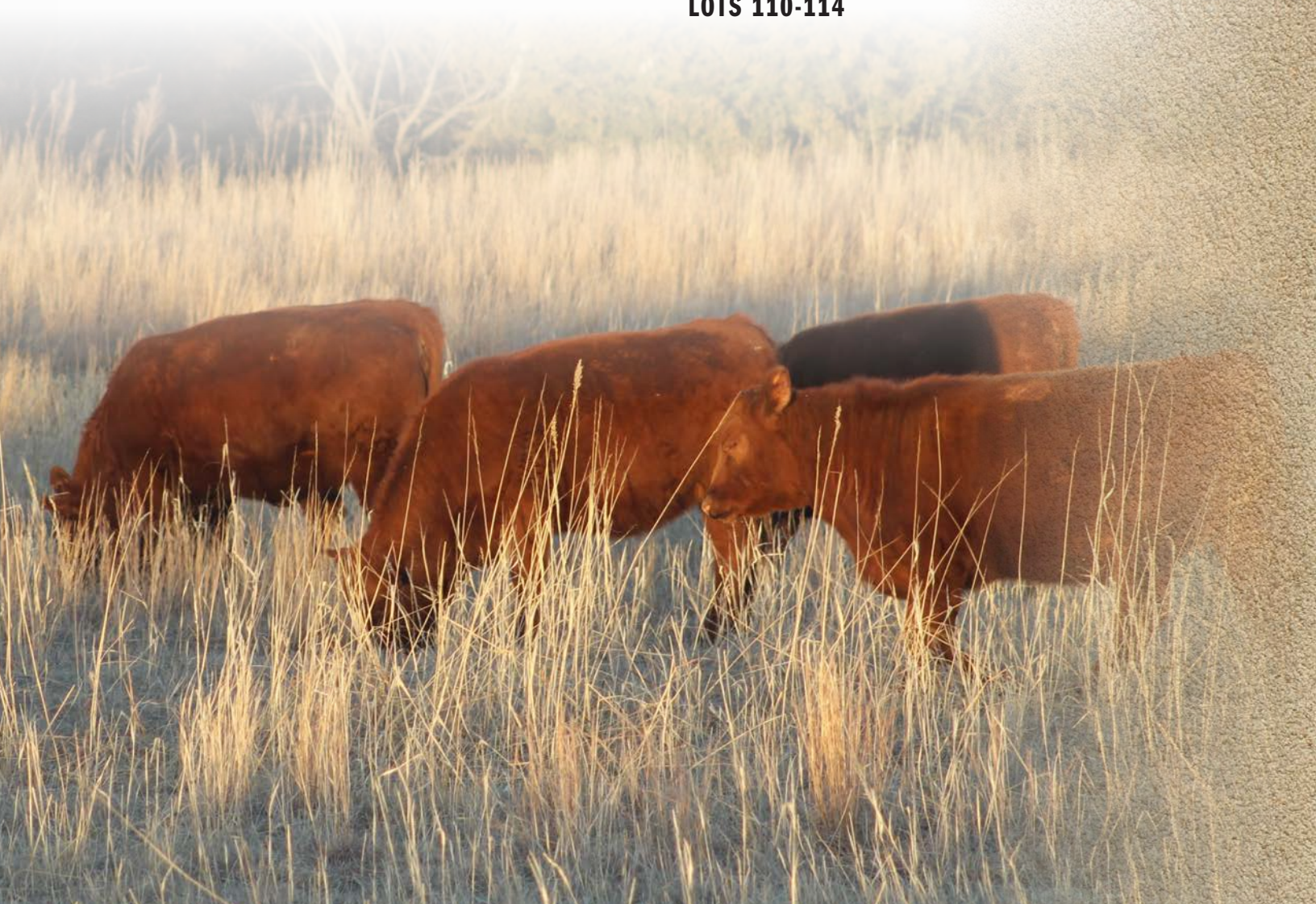
LOTS 95-99

These 5 are registered & papers
can be transferred upon request.

LOTS 100-104

LOTS 105-109

LOTS 110-114



thank you

WE APPRECIATE OUR CUSTOMERS!



LEMKE CATTLE

ALSO THANK YOU
TO OUR COOPERATORS!

Diamond A Land & Cattle
M E Land & Cattle



Lemke Cattle
1757 Road 2500
Lawrence, NE 68957



LEMKE CATTLE
15TH annual
BULL & HEIFER SALE

WATCH AND BID LIVE ON
DVAuction
Broadcasting Real-Time Auctions

FRIDAY, FEBRUARY 12, 2021

1:30 PM | LEMKE SALE FACILITY | LAWRENCE, NE

