

16TH ANNUAL BULL & FEMALE SALE

LEMKE CATTLE

FEBRUARY 11, 2022

1:30 PM | LEMKE SALE FACILITY | LAWRENCE, NEBRASKA



SELLING 90 ANGUS, RED ANGUS, AND ANGUS HYBRID BULLS

PLUS! Registered & Commercial Red Angus Heifers and Commercial Red Angus Bred Heifers

WELCOME TO THE SALE

Welcome to Lemke Cattle



Thank you for your interest in our 16th Annual Lemke Cattle Bull & Heifer Sale! Over half of the sale offering are ET's from our elite donors. We continue to multiply our top genetics from our leading donors through our aggressive ET program which provides groups of top quality brothers. One of our goals is to provide our customers with the most progressive and

proven genetics out there to give you an ADVANTAGE. Our genetics give you that ADVANTAGE with the ability to produce value added cattle whether retaining replacement heifers, marketing unweaned calves, backgrounded feeders, bred heifers or finished cattle.

Our program gives you an ADVANTAGE with decades of investment in AI and ET genetics while also investing in DNA technology to give you the most accurate Genomic Enhanced EPDs possible.

More ADVANTAGES include: developing bulls for longevity, carcass ultrasound testing, vaccination and fertility testing protocols, first breeding season guarantees, marketing assistance and producing genetics with the ability to qualify for elite marketing programs like Top Dollar Angus. Real genetic value and satisfied customers is our primary goal.

Please join us Friday, February 11th at the ranch south of Lawrence, NE and enjoy good cattle, good food, and good people!

Sincerely,
The Lemke Family

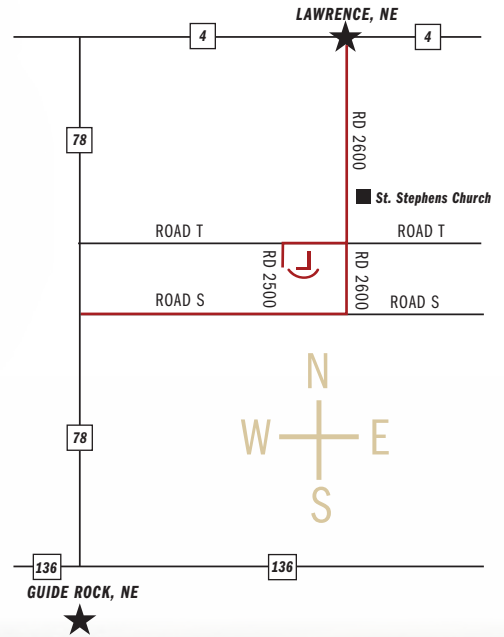


LEMKECATTLE.COM



**Randy, Leslie, Sammy & Matt,
Taylor, and Tanner Lemke**
Randy: 402-469-2284 / Tanner: 402-984-4596
Email: rlemke@gtmc.net

DIRECTIONS TO THE SALE SITE
1757 Road 2500 / Lawrence, NE 68957
From Lawrence, Nebraska
3 Miles South on Road 2600
1 Mile West on Road T
1/4 Mile South on Road 2500



ONLINE BIDDING AND VIDEOS The sale will be broadcast live on DVAuction.com with videos available two weeks prior to the sale. Visit DVAuction.com and register at least 24 hours prior to the sale in order to receive your bidder number.
For general questions, please contact the office at 402-316-5460.

DVAuction
Broadcasting Real-Time Auctions



Reliable Leading Genetics

LEMKE CATTLE ANNUAL BULL & HEIFER SALE



FRIDAY, FEBRUARY 11, 2022 - 1:30 PM

16th Annual Bull Sale

GENERAL INFORMATION

FRIDAY - 1:30 PM

FEBRUARY 11, 2022

LEMKE CATTLE SALE FACILITY — LAWRENCE, NE

SALE DAY CONTACTS

Home/Sale Barn --- 402-756-7090
Randy Lemke --- 402-469-2284
Tanner Lemke --- 402-984-4596
Leslie Lemke --- 402-469-5589

AUCTIONEER

Matt Lowery --- 308-750-6119

REPRESENTATIVES

Cattle Business Weekly, Chris Beutler 402-380-8244
Tri State Livestock News, Jake St. Amant 308-568-9084
Livestock Plus, Randy Rasby 308-539-6195

ACCOMODATIONS

Blue Hill Motel, Blue Hill, NE --- 402-756-3901
Comfort Inn, Hastings, NE --- 402-463-5252

LUNCH A beef meal will be provided sale day starting at 12:00 PM.

ABSENTEE BIDDING

Call Randy a few days prior to the auction. We can take bids over the phone during the auction, have designated bidders for you, or bid live on DV Auction, whichever you feel comfortable with. All absentee bids will be handled with integrity and professionalism.

GUARANTEE

All bulls are covered 100% to be sound & fertile. Buyers of all bulls that sustain injury or death during first breeding season will have 50% credit at the next sale at the value of purchase price minus \$1,500 salvage value. This provides equal risk to both seller & purchaser. Contact Lemke Cattle promptly in this event, we usually have replacement bulls on hand. Breeding season is defined as the 90 day period following the first turnout of a bull.

FEEDING

The bulls are fed a high roughage ration so they develop, not get fat. Customer feedback has been that the bulls hold up very well.

ANNOUNCEMENTS

Any announcements made sale day will take precedence over any information printed in the catalog.

VOLUME	2 Bulls -- 1% / 3 Bulls -- 2%
DISCOUNTS	4 Bulls -- 3% / 5 Bulls -- 4%

HEALTH

All bulls are on a complete health program. Vaccinated with IBR, BVD Type I and II, P13, BRSV, Pasturella, 7-way, Haemophilus, wormed and poured. All bulls have tested negative BVD.

Stephen Russell, DVM --- 785-527-0594

All bulls will have passed a fertility test and examination.

SALE SUPPLEMENT

A sale supplement sheet with ultrasound data, scrotal measurements, and yearling weights will be available sale day.

DELIVERY

Free delivery of bulls in Nebraska and Northern Kansas, or meet at central locations. Transportation of females is the responsibility of the buyer and must be picked up within two days of the sale. We'll be happy to assist with transportation and females will be fed and cared for until picked up.

FREE CARE

Bulls will be fed and cared for at purchaser's risk until April 1st. Bulls may be fed after April 1st at the cost of \$4.00 per head per day. Any bulls picked up within 3 days of sale will have \$100 deducted from the purchase price.

LIABILITY

Every precaution will be taken to protect the safety and comfort of those attending the sale. All persons attending the sale do so at their own risk and neither the owner or sale staff assume any responsibility or liability, legal, or otherwise for any accidents occurring in or about the premises.

SEMEN INTEREST

Lemke Cattle will retain a 1/3 semen interest in any bull selling. Buyer receives full possession and salvage value.

EMBRYO TRANSPLANT CALVES

Embryo Transplant Calves are born to and raised from a recipient cow, therefore the actual birth and weaning weights are not an accurate representation of the calves performance. EPD's give a much more accurate picture of their true genetic potential.

All bulls have been tested and are free of genetic defects.

CALVING EASE STARS	★★★★	Absolute Heifer Bull
	★★★	Larger Heifers or Cows
	★★	Young and Mature Cows
	★	Mature Cows





S A V RESOURCE 1441

ANGUS

| R R Rito 707
Rito 707 of Ideal 3407 7075
 | Ideal 3407 of 1418 076
 | S A V 8180 Traveler 004
S A V Blackcap May 4136
 | S A V May 2397

REG
 17016597
DOB
 1/7/2011
TATTOO
 1441

CED	BW	WW	YW	SC	CEM	MILK
2	4.1	69	132	1.12	0	17
MARB	RE	\$W	\$F	\$G	\$B	\$C
-0.11	1.10	55	91	25	116	203



LD CAPITALIST 316

ANGUS

| S A V Final Answer 0035
Connealy Capitalist 028
 | Prides Pita of Conanga 8821
 | C A Future Direction 5321
LD Dixie Erica 2053
 | LD Dixie Erica Oar 0853

REG
 17666102
DOB
 1/26/2013
TATTOO
 316

CED	BW	WW	YW	SC	CEM	MILK
12	-0.6	67	114	0.45	12	25
MARB	RE	\$W	\$F	\$G	\$B	\$C
0.69	0.58	82	100	48	148	256



MUSGRAVE 316 EXCLUSIVE

ANGUS

| Connealy Capitalist 028
LD Capitalist 316
 | LD Dixie Erica 2053
 | Musgrave Foundation
Musgrave Prim Lassie 163-386
 | SCR Prim Lassie 80634

REG
 18130471
DOB
 2/06/2015
TATTOO
 1175

CED	BW	WW	YW	SC	CEM	MILK
8	0.6	69	123	1.14	12	23
MARB	RE	\$W	\$F	\$G	\$B	\$C
0.94	0.71	71	108	61	169	298



MOGCK ENTICE

ANGUS

| SydGen Exceed 3223
SydGen Enhance
 | SydGen Rita 2618
 | Mogck Sure Shot 253
MOGCK Erica 2255
 | MOGCK Erica 2162

REG
 18952921
DOB
 01/31/2017
TATTOO
 2577

CED	BW	WW	YW	SC	CEM	MILK
3	2.2	78	144	2.20	-2	31
MARB	RE	\$W	\$F	\$G	\$B	\$C
0.86	0.80	81	112	66	178	303



S A V RENOWN 3439

ANGUS

R R Rito 707
Rito 707 of Ideal 3407 7075
 Ideal 3407 of 1418 076
 S A V 8180 Traveler 004
S A V Blackcap May 4136
 S A V May 2397

REG
 17633839
DOB
 1/07/2013
TATTOO
 3439

CEM	BW	WW	YW	SC	CEM	MILK
-2	2.8	70	125	0.44	2	20
MARB	RE	\$W	\$F	\$G	\$B	SC
-0.21	0.82	66	73	16	88	170



WERNER FLAT TOP 4136

ANGUS

Connealy Consensus 7229
Connealy Black Granite
 Eura Elga of Conanga 9109
 C R A Bextor 872 5205 608
Werner Lady 0304
 SandPoint Lady 7869

REG
 18094501
DOB
 9/07/2014
TATTOO
 4136

CEM	BW	WW	YW	SC	CEM	MILK
17	-2.0	55	113	0.39	11	37
MARB	RE	\$W	\$F	\$G	\$B	SC
0.74	0.61	72	78	56	134	226



Semen Available!

LEM FULLBACK 9018 ET



Contact owners: Dale & Rod Holtzen at Hebron, NE
 or Randy Lemke at Lemke Cattle

LEM RELIABLE 9003 ET



Contact owners: Jared Dick at Shaggy Meadows Red Angus
 or Randy Lemke at Lemke Cattle





HXC ALLEGIANCE 5502C

RED ANGUS

| LSF NEXTPECTION 0083X
LEACHMAN PLEDGE A282Z
 | LCOC ZARA TG004
 | BECKTON NEBULA P P707
HXC 100Y
 | HXC ZIMA 338N

REG
 3494126
DOB
 2/14/2015
TATTOO
 5502C

PRO S	HERD	GRID	CED	BW	WW	YW
134	46	88	11	-1.4	71	122
MILK	CEM	STAY	MARB	YG	CW	REA
30	3	15	0.96	0.20	47	0.22



PELTON WIDELoad 78B

RED ANGUS

| UBAR HIGH CAPACITY 224
SLGN WIDELoad 920W
 | MEADO-WEST PERSUASION
 | NEO-SHO DIRECT TICKET M517
PELTON MISS JAYLA 0508S
 | PELTONS MISS CORY 5037N

REG
 1651711
DOB
 2/10/2013
TATTOO
 352

PRO S	HERD	GRID	CED	BW	WW	YW
105	64	41	11	-2.3	89	149
MILK	CEM	STAY	MARB	YG	CW	REA
25	10	10	0.13	-0.00	46	0.42



9 MILE FRANCHISE 6305

RED ANGUS

| SPUR FRANCHISE 7070
SPUR FRANCHISE OF GARTON
 | H & H IRENE LASS 0135
 | TR COLT 45 UT806
C-BAR ABIGRACE Y11
 | C-BAR & BROWN ABIGRACE T712

REG
 1704763
DOB
 2/2/2014
TATTOO
 78B

PRO S	HERD	GRID	CED	BW	WW	YW
90	39	51	10	-2.1	64	104
MILK	CEM	STAY	MARB	YG	CW	REA
24	5	12	0.70	0.08	23	0.21



RREDS SENECA 731C

RED ANGUS

| BIEBER ROOSEVELT W384
BIEBER ROLLIN DEEP Y118
 | BIEBER TILLY 399W
 | BECKTON EPIC R397 K
RREDS ASTER 309A
 | MLK CRK ASTER 175

REG
 3491307
DOB
 3/1/2015
TATTOO
 731C

PRO S	HERD	GRID	CED	BW	WW	YW
52	53	-1	12	-2.5	73	117
MILK	CEM	STAY	MARB	YG	CW	REA
23	5	15	0.05	0.17	30	0.32



LEMKE CATTLE

WHY LEMKE BULLS?

Many of the bulls offered are in the Top 1% of the Breed! Compare the numbers, the phenotype, the customer service and marketing assistance; and it is plain to see why our customer base keeps growing. Put us to work for you - building value in your herd!

International Cattle Evaluation Statistical Breakdown 2021

Hybrid Non-Parent Averages		LEMKE Sale Bull Averages	
WW	69	81	TOP 18%
YW	106	135	TOP 11%
CW	35	52	TOP 13%
MARB	0.35	0.46	TOP 27%
FPI	79.60	89.22	TOP 16%
PG30	1	2	TOP 26%
TM	55	60	TOP 27%

Top Dollar Angus Feeder Calf Program



Promote Your Verified Genetic Investment




Top Dollar Angus is the industry leader in third-party genetic verification and marketing assistance for superior Angus and Red Angus-based feeder cattle. Our program stamps a unique identity on the 'best of the best' by verifying and then showcasing their genetic merit. The Top Dollar Angus team works directly with a large number of feedyards and buyers to provide them with documented superior

feeder cattle, coupled with genetic risk mitigation and the precision understanding they need to pursue your cattle with absolute confidence.

Top Dollar Angus enables cow-calf producers to benefit from the genetic value already built into their herds. Producers that invest in high-end genetics, as well as strong health and nutrition programs, need a means of positively differentiating their calves from average cattle. Top Dollar Angus does that. Industry demand is strong for genetically superior feeder calves with the right supporting documentation. Don't make buyers guess, let them know by putting the Top Dollar Angus badge of honor on your premium genetic investment.



Contact our team for more information and a free evaluation:

   www.topdollarangus.com

Nate Smith, General Manager • (620) 546-4839 • nate@topdollarangus.com
Kacey Jacobson • (701) 391-4646 • kacey@topdollarangus.com
Jake Feddes • (406) 581-8157 • jake@topdollarangus.com
Adam Menker • (419) 310-5344 • adam@topdollarangus.com
Jason Gagnon • (559) 723-6362 • jason@topdollarangus.com
Andy Albrecht • (402) 922-1000 • andy@topdollarangus.com





LOT 1

FLUSH BROTHERS LOTS 1-10

Impeccable set of flush brothers that are unmatched in their power, performance, and phenotype. They hail from arguably our best and most powerful donor cow, who's sons are regularly at the front of the sale and daughters are finding their way to the donor pen. You could breed her to a wildebeest and the calves would still be top notch. Combine that with the known excellence of females from Capitalist 316 bloodlines and you will find that these bulls are bound to produce some out of this world replacement heifers. If you are looking for explosive performance and maternal excellence, this is your set of bulls.

REFERENCE PHOTO



SIRE OF LOTS 1-20 **MUSGRAVE 316 EXCLUSIVE**

1 LEM SHOCKWAVE 1028 ET

REG: AMGV1521581 | DOB: 1/10/21 | TAT: 1028J | 4.7GV, 43.8AN, 1.6AR, 50XX

| LD CAPITALIST 316

MUSGRAVE 316 EXCLUSIVE

| MUSGRAVE PRIM LASSIE 163-386

| S A V RESOURCE 1441

MS RESOURCE 626D ET

| MS FINAL ANSWER 121Y

Homozygous Black
Polled Hybrid

ACT BW	ADJ WW
86	723

CALVING EASE

★★

GENESEEEK
a Neogenet Company

CED	BW	WW	YW	MILK	CEM	HP	ST	YG	CW	REA	MARB	FPI
10	0.5	96	161	17	6	5	10	0.17	56	0.54	0.43	95.07
85%	70%	1%	1%	80%	60%	50%	95%	>95%	2%	55%	25%	2%

Tremendous herd bull prospect. Super deep from rib to flank, long, wide, correct, and sound. Packed full of performance and maternal genetics from the proven 626 donor and Exclusive. Calm and very easy to handle. Step up to this bull and give the order buyers a "shockwave" when his calves enter the sale ring! 16.76 ADJ REA and 1396 ADJ YW. Top 1% WW, YW. Top 2% CW, FPI. Top 10% Total Maternal. Homozygous Black and Top Dollar Angus Qualified.



2 LEM EXCLUSIVE 1026 ET

REG: AMGV1521579 | DOB: 1/12/21 | TAT: 1026J | 4.7GV, 43.8AN, 1.6AR, 50XX

LD CAPITALIST 316

MUSGRAVE 316 EXCLUSIVE

MUSGRAVE PRIM LASSIE 163-386

S A V RESOURCE 1441

MS RESOURCE 626D ET

MS FINAL ANSWER 121Y

Homozygous Black
Polled Hybrid

ACT BW	ADJ WW
83	705
CALVING EASE	
★★	



CED	BW	WW	YW	MILK	CEM	HP	ST	YG	CW	REA	MARB	FPI
11	0.2	98	166	17	6	5	10	0.18	65	0.51	0.59	101.13
70%	60%	1%	1%	80%	60%	50%	95%	>95%	1%	60%	10%	1%

16.22 ADJ REA and 1345 ADJ YW. Top 1% WW, YW, CW, FPI. Top 4% Total Maternal. Homozygous Black and Top Dollar Angus Qualified.



LOT 2

3 LEM EXCLUSIVE 1027 ET

REG: AMGV1521580 | DOB: 1/13/21 | TAT: 1027J | 4.7GV, 43.8AN, 1.6AR, 50XX

LD CAPITALIST 316

MUSGRAVE 316 EXCLUSIVE

MUSGRAVE PRIM LASSIE 163-386

S A V RESOURCE 1441

MS RESOURCE 626D ET

MS FINAL ANSWER 121Y

Homozygous Black
Polled Hybrid

ACT BW	ADJ WW
87	743
CALVING EASE	
★★	



CED	BW	WW	YW	MILK	CEM	HP	ST	YG	CW	REA	MARB	FPI
10	0.6	83	145	17	5	5	12	0.18	62	0.57	0.64	92.54
85%	70%	10%	1%	80%	80%	50%	80%	>95%	1%	45%	4%	3%

15.74 ADJ REA. Top 1% YW, CW. Top 3% FPI. Top 4% Marb. Homozygous Black and Top Dollar Angus Qualified.



LOT 3

4 LEM EXCLUSIVE 1025 ET

REG: AMGV1521578 | DOB: 1/11/21 | TAT: 1025J | 4.7GV, 43.8AN, 1.6AR, 50XX

LD CAPITALIST 316

MUSGRAVE 316 EXCLUSIVE

MUSGRAVE PRIM LASSIE 163-386

S A V RESOURCE 1441

MS RESOURCE 626D ET

MS FINAL ANSWER 121Y

Homozygous Black
Polled Hybrid

ACT BW	ADJ WW
90	662
CALVING EASE	
★★	



CED	BW	WW	YW	MILK	CEM	HP	ST	YG	CW	REA	MARB	FPI
10	0.5	92	152	17	5	5	12	0.18	61	0.59	0.48	93.55
85%	70%	1%	1%	80%	80%	50%	80%	>95%	1%	40%	15%	3%

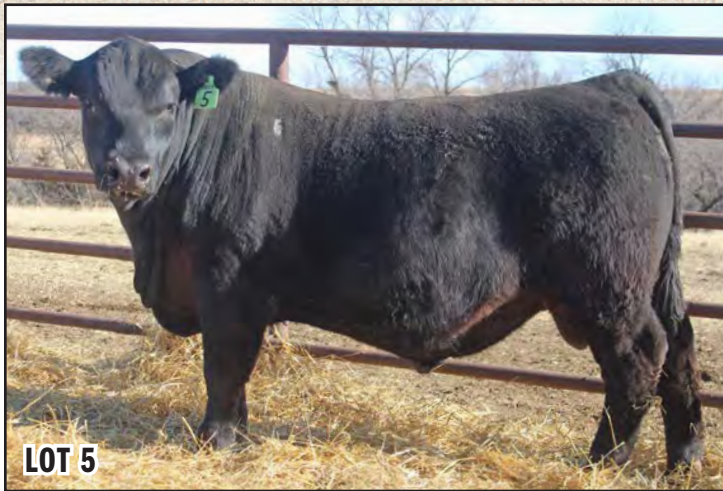
Stout and sound. Hard to make bulls packed with this much muscle that look this good! 14.24 ADJ REA. Top 1% WW, YW, CW. Top 3% Docility. Top 10% Total Maternal, FPI. Homozygous Black and Top Dollar Angus Qualified.



LOT 4

**Grab a group of these full brothers for an outstanding, uniform set of calves.
Take advantage of our volume discounts!**





5 LEM EXCLUSIVE 1023 ET

REG: AMGV1521576 | DOB: 1/13/21 | TAT: 1023J | 4.7GV, 43.8AN, 1.6AR, 50XX

LD CAPITALIST 316
MUSGRAVE 316 EXCLUSIVE
 MUSGRAVE PRIM LASSIE 163-386
 S A V RESOURCE 1441
MS RESOURCE 626D ET
 MS FINAL ANSWER 121Y

Homozygous Black
 Polled Hybrid
ACT BW ADJ WW
 89 739
CALVING EASE
 ★★



CED	BW	WW	YW	MILK	CEM	HP	ST	YG	CW	REA	MARB	FPI
8	2.0	94	161	17	3	5	11	0.11	66	0.76	0.30	88.87
95%	95%	1%	1%	80%	95%	50%	90%	>95%	1%	15%	50%	10%

Square made and sound. Too tame to take a good picture. 15.33 ADJ REA and 1366 ADJ YW. Top 1% WW, YW, CW. Top 3% Docility. Top 10% Total Maternal, FPI. Homozygous Black and Top Dollar Angus Qualified.



LOT 6

REFERENCE PHOTO



DAM OF EXCLUSIVE MUSGRAVE PRIM LASSIE 163-386

6 LEM HEAVY IMPACT 1020 ET

REG: AMGV1521573 | DOB: 1/10/21 | TAT: 1020J | 4.7GV, 43.8AN, 1.6AR, 50XX

LD CAPITALIST 316
MUSGRAVE 316 EXCLUSIVE
 MUSGRAVE PRIM LASSIE 163-386
 S A V RESOURCE 1441
MS RESOURCE 626D ET
 MS FINAL ANSWER 121Y

Homozygous Black
 Polled Hybrid
ACT BW ADJ WW
 86 718
CALVING EASE
 ★★



CED	BW	WW	YW	MILK	CEM	HP	ST	YG	CW	REA	MARB	FPI
8	1.9	99	166	17	4	5	13	0.11	64	0.69	0.45	95.54
95%	95%	1%	1%	80%	90%	50%	70%	>95%	1%	25%	20%	2%

Major herd bull here! They don't come any more powerful, deep, square, long and wide. Super complete herd sire prospect. 14.82 ADJ REA and 1408 ADJ YW. Top 1% WW, YW, CW. Top 2% FPI. Top 4% Total Maternal. Top 25% REA, MARB. Homozygous Black and Top Dollar Angus Qualified.



7 LEM EXCLUSIVE 1029 ET



REG: AMGV1521582 | DOB: 1/11/21 | TAT: 1029J | 4.7GV, 43.8AN, 1.6AR, 50XX

LD CAPITALIST 316

MUSGRAVE 316 EXCLUSIVE

MUSGRAVE PRIM LASSIE 163-386

S A V RESOURCE 1441

MS RESOURCE 626D ET

MS FINAL ANSWER 121Y

Homozygous Black Polled Hybrid	
ACT BW	ADJ WW
89	774
CALVING EASE	
★★	



CED	BW	WW	YW	MILK	CEM	HP	ST	YG	CW	REA	MARB	FPI
12	1.2	96	164	17	7	5	9	0.24	61	0.44	0.53	97.03
55%	85%	1%	1%	80%	40%	50%	95%	>95%	1%	75%	10%	1%

Herd bull. Stout, rugged, and sound. 1343 ADJ YW. Top 1% WW, YW, CW, FPI. Top 3% Docility. Top 10% Total Maternal. Homozygous Black. Top Dollar Angus Qualified.



8 LEM EXCLUSIVE 1022 ET



REG: AMGV1521575 | DOB: 1/12/21 | TAT: 1022J | 4.7GV, 43.8AN, 1.6AR, 50XX

LD CAPITALIST 316

MUSGRAVE 316 EXCLUSIVE

MUSGRAVE PRIM LASSIE 163-386

S A V RESOURCE 1441

MS RESOURCE 626D ET

MS FINAL ANSWER 121Y

Homozygous Black Polled Hybrid	
ACT BW	ADJ WW
82	689
CALVING EASE	
★★	



CED	BW	WW	YW	MILK	CEM	HP	ST	YG	CW	REA	MARB	FPI
12	0.7	78	129	17	6	5	12	0.14	56	0.59	0.53	87.13
55%	75%	15%	10%	80%	60%	50%	80%	>95%	2%	40%	10%	15%

Top 2% CW. Top 3% Docility. Top 10% YW, MARB. Top 15% WW, FPI. Homozygous Black and Top Dollar Angus Qualified.

9 LEM EXCLUSIVE 1024 ET



REG: AMGV1521577 | DOB: 1/10/21 | TAT: 1024J | 4.7GV, 43.8AN, 1.6AR, 50XX

LD CAPITALIST 316

MUSGRAVE 316 EXCLUSIVE

MUSGRAVE PRIM LASSIE 163-386

S A V RESOURCE 1441

MS RESOURCE 626D ET

MS FINAL ANSWER 121Y

Homozygous Black Polled Hybrid	
ACT BW	ADJ WW
80	713
CALVING EASE	
★★	



CED	BW	WW	YW	MILK	CEM	HP	ST	YG	CW	REA	MARB	FPI
11	0.4	90	151	17	6	5	10	0.17	64	0.61	0.49	93.40
70%	65%	2%	1%	80%	60%	50%	95%	>95%	1%	40%	15%	3%

Top 1% YW, CW. Top 2% WW. Top 3% FPI. Homozygous Black and Top Dollar Angus Qualified.

10 LEM EXCLUSIVE 1021 ET



REG: AMGV1521574 | DOB: 1/11/21 | TAT: 1021J | 4.7GV, 43.8AN, 1.6AR, 50XX

LD CAPITALIST 316

MUSGRAVE 316 EXCLUSIVE

MUSGRAVE PRIM LASSIE 163-386

S A V RESOURCE 1441

MS RESOURCE 626D ET

MS FINAL ANSWER 121Y

Homozygous Black Polled Hybrid	
ACT BW	ADJ WW
88	658
CALVING EASE	
★★	



CED	BW	WW	YW	MILK	CEM	HP	ST	YG	CW	REA	MARB	FPI
12	0.9	83	141	17	6	5	14	0.23	51	0.33	0.49	88.31
55%	80%	10%	2%	80%	60%	50%	55%	>95%	4%	90%	15%	10%

Top 2% YW. Top 4% CW. Top 10% WW, FPI. Homozygous Black. Top Dollar Angus Qualified.





LOT 12

11 LEM RENOWN 1030 ET

REG: AMGV1522110 | DOB: 1/15/21 | TAT: 1030J | 3.2GV, 96.9AN



RITO 707 OF IDEAL 3407 7075

S A V RENOWN 3439

S A V BLACKCAP MAY 4136

BALDRIDGE BRONC

LEM MISS BRONC 923

MS CAPITALIST 709 ET

Homozygous Black
Polled Hybrid

ACT BW	ADJ WW
80	702

CALVING EASE
★★★



CED	BW	WW	YW	MILK	CEM	HP	ST	YG	CW	REA	MARB	FPI
14	-2.3	80	136	20	6	6	15	0.20	48	0.29	0.34	87.61
30%	15%	10%	3%	55%	60%	40%	40%	>95%	10%	90%	40%	10%

The first of a thick set of brothers with powerful phenotype, great maternal, performance, and carcass. Good calving ease for a Renown son. 14.98 ADJ REA. Top 3% YW. Top 10% WW, CW, FPI. Top 15% BW, PG30. Homozygous Black and Top Dollar Angus Qualified.

12 LEM RENOWN 1031 ET

REG: AMGV1522111 | DOB: 1/16/21 | TAT: 1031J | 3.2GV, 96.9AN



RITO 707 OF IDEAL 3407 7075

S A V RENOWN 3439

S A V BLACKCAP MAY 4136

BALDRIDGE BRONC

LEM MISS BRONC 923

MS CAPITALIST 709 ET

Homozygous Black
Polled Hybrid

ACT BW	ADJ WW
83	742

CALVING EASE
★★★



CED	BW	WW	YW	MILK	CEM	HP	ST	YG	CW	REA	MARB	FPI
12	-0.4	84	142	20	5	6	17	0.21	51	0.43	0.37	88.13
55%	45%	5%	2%	55%	80%	40%	15%	>95%	4%	75%	35%	10%

Powerful genetics from perfect uddered donor dam. 16.67 ADJ REA. Top 2% YW. Top 4% CW. Top 5% YW. Top 10% FPI. Top 15% TM, PG30, and STAY. Homozygous Black and Top Dollar Angus Qualified.

FLUSH BROTHERS LOTS 11-13

Muscle. Muscle. Muscle. These brothers catch your eye immediately with their incredible muscle expression and overall power. They are the first progeny of the 923 cow that is quickly rising to the top of our donor pen. Their flush sisters are a sight to see and will be cows at the top of our herd for years to come. Their sire, SAV Renown, is a full brother to SAV Resource and, like his brother, is famous for siring elite females.





LOT 13

13 LEM BODYGUARD 1032 ET

REG: AMGV1522112 | DOB: 1/16/21 | TAT: 1032J | 3.2GV, 96.9AN

RITO 707 OF IDEAL 3407 7075

S A V RENOWN 3439

S A V BLACKCAP MAY 4136

BALDRIDGE BRONC

LEM MISS BRONC 923

MS CAPITALIST 709 ET

Homozygous Black
Polled Hybrid

ACT BW	ADJ WW
86	722
CALVING EASE	
★★★	



CED	BW	WW	YW	MILK	CEM	HP	ST	YG	CW	REA	MARB	FPI
12	-2.3	77	130	20	5	6	16	0.21	50	0.34	0.23	82.42
55%	15%	20%	10%	55%	80%	40%	25%	>95%	5%	85%	65%	30%

Definite herd bull prospect. Powerful phenotype. Super sound and correct. Deep bodied with a huge hip and perfect uddered dam to back it up. Keep every heifer. 1326 ADJ YW. Top 5% DOC, CW. Top 10% YW. Top 15% BW, PG30. Homozygous Black.

REFERENCE PHOTO



SIRE OF LOTS 11-13 S A V RENOWN 3439

POWERFUL GENETICS from a beautiful uddered donor dam!



FLUSH BROTHERS LOTS 14-15

Out of one of the elite donors in our herd in the 505 cow. She has perfect udders and is one of the best and highest performance Charlo daughters you will find anywhere. Her flush with Capitalist 316 produces these two high quality bulls and an outstanding group of heifers, one of which will be an immediate donor. These bulls will bring maternal value right to your herd, along with top growth from the 505 donor.



14 LEM CAP 316 1033 ET

REG: AMGV1521583 | DOB: 1/20/21 | TAT: 1033J | 12.5GV, 87.5AN

CONNEALY CAPITALIST 028
LD CAPITALIST 316
 LD DIXIE ERICA 2053
 COLEMAN CHARLO 0256
MS CHARLO 505C ET
 MS GRID TOPPER 124Y ET

Homozygous Black
 Polled Hybrid
ACT BW 88 **ADJ WW 791**
CALVING EASE
 ★★



CED	BW	WW	YW	MILK	CEM	HP	ST	YG	CW	REA	MARB	FPI
14	0.2	96	146	18	7	2	9	0.27	64	0.40	0.56	98.45

30% 60% 1% 1% 75% 40% 85% 95% >95% 1% 80% 10% 1%
 1387 ADJ YW. 123 IMF Ratio. Top 1% WW, YW, CW, FPI. Top 4% TM. Top 10% MARB. Homozygous Black and Top Dollar Angus Qualified.

15 LEM CAP 316 1034 ET

REG: AMGV1521584 | DOB: 1/18/21 | TAT: 1034J | 12.5GV, 87.5AN

CONNEALY CAPITALIST 028
LD CAPITALIST 316
 LD DIXIE ERICA 2053
 COLEMAN CHARLO 0256
MS CHARLO 505C ET
 MS GRID TOPPER 124Y ET

Black
 Polled Hybrid
ACT BW 84 **ADJ WW 701**
CALVING EASE
 ★★



CED	BW	WW	YW	MILK	CEM	HP	ST	YG	CW	REA	MARB	FPI
15	-2.3	77	110	18	8	2	12	0.22	52	0.44	0.43	86.91

15% 15% 20% 35% 75% 25% 85% 80% >95% 4% 75% 25% 15%
 Top 4% CW. Top 15% CED, BW, FPI. 15.5 ADJ REA. Top Dollar Angus Qualified.

REFERENCE PHOTO



SIRE OF LOT 16 **BASIN PAYWEIGHT 1682**

16 LEM PAYWEIGHT 1035 ET

REG: AMGV1521598 | DOB: 1/20/21 | TAT: 1035J | 6.3GV, 93.8AN

BASIN PAYWEIGHT 006S
BASIN PAYWEIGHT 1682
 21AR O LASS 7017
 S A V RESOURCE 1441
MS RESOURCE 920 ET
 MS CAP 622D ET

Black
 Polled Hybrid
ACT BW 88 **ADJ WW 714**
CALVING EASE
 ★★



CED	BW	WW	YW	MILK	CEM	HP	ST	YG	CW	REA	MARB	FPI
12	-0.1	81	131	20	6	13	16	0.19	60	0.48	0.44	87.49

55% 55% 10% 5% 55% 60% 2% 25% >95% 1% 65% 20% 10%
 Out of an absolutely beautiful young female in 920. This bull combines power, maternal, and performance from his popular sire Payweight 1682 and his dam. 15.04 ADJ REA and 122 IMF Ratio. Top 1% CW. Top 2% HP. Top 5% YW, PG30. Top 10% WW, FPI. Top Dollar Angus Qualified.



17 LEM FLATTOP 1038

REG: AMGV1522480 | DOB: 1/18/21 | TAT: 1038J | 12.5GV, 87.5AN



CONNEALY BLACK GRANITE
 WERNER FLAT TOP 4136
 WERNER LADY 0304
 RANSOM 777 ET
 954
 MS BRILLIANCE 304 A

Homozygous Black
 Polled Hybrid
ACT BW **ADJ WW**
78 **733**
CALVING EASE
 ★★★★★



LOT 17

CED	BW	WW	YW	MILK	CEM	HP	ST	YG	CW	REA	MARB	FPI
16	-2.8	75	132	22	9	6	14	0.11	40	0.36	0.61	93.61
15%	10%	25%	5%	35%	15%	40%	55%	>95%	20%	85%	5%	3%

Tremendous performance and power in a heifer bull! 1393 ADJ YW, 15.39 ADJ REA, and 112 IMF Ratio. Top 25% in 11 EPDs and Indexes. Homozygous Black and Top Dollar Angus Qualified.



LOT 18

18 LEM GLADIATOR 1039

REG: AMGV1522481 | DOB: 1/19/21 | TAT: 1039J | 14.9GV, 84.2AN, 1AR



CONNEALY BLACK GRANITE
 WERNER FLAT TOP 4136
 WERNER LADY 0304
 BALDRIDGE COMMAND C036
 MS COMMAND 959
 MS SILVER 735 ET

Homozygous Black
 Polled Hybrid
ACT BW **ADJ WW**
72 **728**
CALVING EASE
 ★★★★★



CED	BW	WW	YW	MILK	CEM	HP	ST	YG	CW	REA	MARB	FPI
20	-2.9	72	125	22	11	7	17	0.24	40	0.21	0.60	92.02
1%	10%	35%	10%	35%	3%	30%	15%	>95%	20%	>95%	5%	4%

These Flat Tops have giant spreads. They blow you away with their ability to calve easily and rapidly grow into excellent performing cattle. Their phenotypes are hard to knock as well. Wears a 15.64 ADJ REA and 1343 ADJ YW all while having a 76 ADJ BW. CED, BW, YW, CEM, PG30, STAY, DOC, MARB, and FPI all rank in the top 15% or higher. Homozygous Black and Top Dollar Angus Qualified.

19 LEM RESOURCE 1040

REG: AMGV1522491 | DOB: 1/12/21 | TAT: 1040J | 14.9GV, 84.4AN, 0.9AR

RITO 707 OF IDEAL 3407 7075
 S A V RESOURCE 1441
 S A V BLACKCAP MAY 4136
 REPUTATION 550C ET
 MS REPUTATION 803 ET
 MS GRID TOPPER 124Y ET

Black
 Scurs Hybrid
ACT BW **ADJ WW**
86 **729**
CALVING EASE
 ★★



CED	BW	WW	YW	MILK	CEM	HP	ST	YG	CW	REA	MARB	FPI
12	0.5	81	141	16	5	3	11	0.00	64	0.84	0.27	83.62
55%	70%	10%	2%	85%	80%	75%	90%	85%	1%	5%	55%	25%

Top growth and performance with muscle. Loose scurs. 17.65 ADJ REA and 1394 ADJ YW. Top 1% CW. Top 2% YW. Top 5% REA.





LOT 20

REFERENCE PHOTO



REFERENCE SIRE **WERNER FLAT TOP 4136**

20 LEM FLATTOP 1041

REG: AMGV1522482 | DOB: 1/17/21 | TAT: 1041J | 2.4GV, 96.9AN, 0.8AR

CONNEALY BLACK GRANITE
 WERNER FLAT TOP 4136
 WERNER LADY 0304
 S A V RESOURCE 1441
 LEM MS RESOURCE ALBER960 ET
 MS CAPITALIST 619D ET

20

Homozygous Black
 Polled Hybrid

ACT BW	ADJ WW
70	718

CALVING EASE
 ★★★★★



CED	BW	WW	YW	MILK	GEM	HP	ST	YG	CW	REA	MARB	FPI
17	-1.2	84	145	20	9	8	15	0.16	52	0.35	0.41	91.80
10%	30%	5%	1%	55%	15%	20%	40%	>95%	4%	85%	25%	4%

Herd bull! We've had great success using Flat Top on heifers. Monster ribeye and big yearling weight in a 4 star calving ease bull that balances it all. Good luck finding another bull that does this much, this well. His toolbox is full. 19.1 ADJ REA and 1495 ADJ YW. Top 1% YW. Top 4% FPI. Top 5% WW. Top 15% TM. Homozygous Black and Top Dollar Angus Qualified.

BALANCED TRAITS | MONSTER RIBEYE | TOP 1% YW!



ANGUS BULL

21 LEM CONSENSUS 1042

REG: AAA20186196 | DOB: 01/20/21 | TAT: 1042 | 100% ANGUS

Connealy Consensus
Connealy Consensus 7229
 Blue Lilly of Conanga 16
 EXAR Denver 2002B
MS Denver 6104 Et
 B/F Forever Lady 46P 7P 104T

ACT BW ADJ WW
 82 698
 CALVING EASE
 ★★



CED	BW	WW	YW	MILK	CEM	SEN	CW	MARB	RE	FAT
6.5	+1.9	56	100	26	9	16	34	0.77	0.57	0.001
SM	SW	SF	SG	SB	SC					
62	67	80	57	136	238					

EPDs listed are average of sire and dam. Really good Angus bull here. Long, sound, and stout. Sired by the time-proven Consensus and from a beautiful uddered, deep bodied EXAR Denver dam. Big ADJ REA of 15.4 and good YW of 1315.



LOT 21

22 LEM FLATTOP 1043

REG: AMGV1522483 | DOB: 1/20/21 | TAT: 1043J | 2.4GV, 96.9AN, 0.8AR

CONNEALY BLACK GRANITE
WERNER FLAT TOP 4136
 WERNER LADY 0304
 S A V RESOURCE 1441
MS RESOURCE 921 ET
 MS CAPITALIST 619D ET

Homozygous Black
 Polled Hybrid
 ACT BW ADJ WW
 74 730
 CALVING EASE
 ★★★★★



CED	BW	WW	YW	MILK	CEM	HP	ST	YG	CW	REA	MARB	FPI
18	-1.6	76	138	21	9	8	12	0.03	44	0.53	0.83	99.17
3%	25%	20%	2%	45%	15%	20%	80%	90%	15%	55%	1%	1%

This bull is a prime example of balancing traits at a high level. He does everything well! 16.4 ADJ REA, 1469 ADJ YW, and 134 IMF Ratio. Top 1% MARB, FPI. Top 2% YW. Top 3% CED. Homozygous Black and Top Dollar Angus Qualified.



LOT 22

23 LEM CONSENSUS 1044

REG: AMGV1522492 | DOB: 1/11/21 | TAT: 1044J | 12.5GV, 87.5AN

CONNEALY CONSENSUS
CONNEALY CONSENSUS 7229
 BLUE LILLY OF CONANGA 16
 BALDRIDGE BRONC
MS BRONC 814 ET
 MS NET WORTH 210 Z ET

Black
 Polled Hybrid
 ACT BW ADJ WW
 87 743
 CALVING EASE
 ★★★



CED	BW	WW	YW	MILK	CEM	HP	ST	YG	CW	REA	MARB	FPI
14	-1.2	69	104	19	7	5	13	0.03	38	0.40	0.59	85.91
30%	30%	50%	50%	65%	40%	50%	70%	90%	30%	80%	10%	15%

Great ribeye and growth from this Consensus son by a Baldrige Bronc cow. 16.79 ADJ REA and 1357 ADJ YW. Top 10% MARB. Top 15% FPI. Top Dollar Angus Qualified.

24 LEM COMMAND 1045

REG: AMGV1522493 | DOB: 1/12/21 | TAT: 1045J | 6.3GV, 93.8AN

EF COMMANDO 1366
BALDRIDGE COMMAND C036
 BALDRIDGE BLACKBIRD A030
 CONNEALY CAPITALIST 028
MS RESOURCE 827 ET
 MS NET WORTH 341 A

Black
 Polled Hybrid
 ACT BW ADJ WW
 80 738
 CALVING EASE
 ★★★



CED	BW	WW	YW	MILK	CEM	HP	ST	YG	CW	REA	MARB	FPI
16	-1.5	79	134	22	7	7	17	0.15	61	0.64	0.80	98.96
15%	25%	15%	4%	35%	40%	30%	15%	>95%	1%	30%	1%	1%

Command balances all traits at a high level. Top 1/3 of breed in 13 EPDs and Indexes. 14.99 ADJ REA, 4.651 IMF, and 1432 ADJ YW. Top 1% CW, MARB, FPI. Top 4% YW. Top Dollar Angus Qualified.

ONLINE BIDDING AND VIDEOS The sale will be broadcast live on DVAuction.com with videos available two weeks prior to the sale. Visit DVAuction.com and register at least 24 hours prior to the sale in order to receive your bidder number.
 For general questions, please contact the office at 402-316-5460.



25 LEM RESOURCE 1046 ET

REG: AMGV1522113 | DOB: 1/18/21 | TAT: 1046J | 12.5GV, 87.5AN

RITO 707 OF IDEAL 3407 7075

S A V RESOURCE 1441

S A V BLACKCAP MAY 4136

CONNEALY CAPITALIST 028

MS CAP 622D ET

MS MIDLAND 823U

Homozygous Black
Polled Hybrid

ACT BW	ADJ WW
87	732

CALVING EASE

★★



CED	BW	WW	YW	MILK	CEM	HP	ST	YG	CW	REA	MARB	FPI
11	1.2	81	136	18	3	5	14	0.08	60	0.63	0.21	80.43
70%	85%	10%	3%	75%	95%	50%	55%	95%	1%	35%	70%	40%

Resource son with top end growth. Top 1% CW. Top 3% YW. Homozygous Black.



LOT 27

26 LEM RESOURCE 1047 ET

REG: AMGV1521993 | DOB: 1/18/21 | TAT: 1047J | 9.4GV, 87.5AN, 3.2AR

RITO 707 OF IDEAL 3407 7075

S A V RESOURCE 1441

S A V BLACKCAP MAY 4136

CONNEALY CAPITALIST 028

MS CAPITAL 717 ET

MS FRONTIER 039X ET

Homozygous Black
Polled Hybrid

ACT BW	ADJ WW
82	708

CALVING EASE

★★



CED	BW	WW	YW	MILK	CEM	HP	ST	YG	CW	REA	MARB	FPI
13	0.7	79	134	16	4	5	15	0.01	56	0.79	0.25	81.65
45%	75%	15%	4%	85%	90%	50%	40%	85%	2%	10%	60%	30%

Top end growth and carcass traits. 14.66 ADJ REA. Top 2% CW. Top 4% YW. Homozygous Black.

27 LEM RESOURCE 1048 ET

REG: AMGV1521994 | DOB: 1/19/21 | TAT: 1048J | 9.4GV, 87.5AN, 3.2AR

RITO 707 OF IDEAL 3407 7075

S A V RESOURCE 1441

S A V BLACKCAP MAY 4136

CONNEALY CAPITALIST 028

MS CAPITAL 717 ET

MS FRONTIER 039X ET

Homozygous Black
Polled Hybrid

ACT BW	ADJ WW
86	751

CALVING EASE

★★



CED	BW	WW	YW	MILK	CEM	HP	ST	YG	CW	REA	MARB	FPI
11	-0.3	69	117	16	3	5	14	0.03	42	0.61	0.34	78.06
70%	50%	50%	20%	85%	95%	50%	55%	90%	20%	40%	40%	50%

Powerful Resource son. 14.9 ADJ REA and 120 IMF Ratio. Homozygous Black.

28 LEM CARGO 1049 ET

REG: AMGV1521995 | DOB: 1/17/21 | TAT: 1049J | 9.4GV, 87.5AN, 3.2AR

RITO 707 OF IDEAL 3407 7075

S A V RESOURCE 1441

S A V BLACKCAP MAY 4136

CONNEALY CAPITALIST 028

MS CAPITAL 717 ET

MS FRONTIER 039X ET

Homozygous Black
Polled Hybrid

ACT BW	ADJ WW
78	704

CALVING EASE

★★



CED	BW	WW	YW	MILK	CEM	HP	ST	YG	CW	REA	MARB	FPI
13	-0.4	74	132	16	4	5	13	0.09	48	0.66	0.15	77.48
45%	45%	30%	5%	85%	90%	50%	70%	>95%	10%	30%	85%	55%

Stout Resource son that's sound with performance and style. 15.15 ADJ REA. Top 5% YW. Homozygous Black.



LOT 28

**VOLUME
DISCOUNTS**

2 Bulls -- 1% / 3 Bulls -- 2%
4 Bulls -- 3% / 5 Bulls -- 4%



29 LEM EXCLUSIVE 1050 ET



REG: AMGV1522063 | DOB: 1/19/21 | TAT: 1050J | 2.4GV, 46.9AN, 0.8AR, 50XX

LD CAPITALIST 316

MUSGRAVE 316 EXCLUSIVE

MUSGRAVE PRIM LASSIE 163-386

BALDRIDGE COMMAND C036

MS COMMAND 918 ET

MS RESOURCE 626D ET

Homozygous Black
Polled Hybrid

ACT BW	ADJ WW
88	764
CALVING EASE	
★★	



CED	BW	WW	YW	MILK	CEM	HP	ST	YG	CW	REA	MARB	FPI
14	-0.1	92	153	20	8	3	13	0.24	61	0.43	0.52	96.65
30%	55%	1%	1%	55%	25%	75%	70%	>95%	1%	75%	15%	1%

Rare to find bulls that combine antagonistic traits of elite performance, maternal, and carcass with a thick made, heavy muscled phenotype. 15.84 ADJ REA. Top 1% WW, YW, CW, FPI. Top 4% TM. Homozygous Black and Top Dollar Angus Qualified.



LOT 29

30 LEM EXCLUSIVE 1051 ET



REG: AMGV1522064 | DOB: 1/20/21 | TAT: 1051J | 2.4GV, 46.9AN, 0.8AR, 50XX

LD CAPITALIST 316

MUSGRAVE 316 EXCLUSIVE

MUSGRAVE PRIM LASSIE 163-386

BALDRIDGE COMMAND C036

MS COMMAND 918 ET

MS RESOURCE 626D ET

Homozygous Black
Polled Hybrid

ACT BW	ADJ WW
87	707
CALVING EASE	
★★	



CED	BW	WW	YW	MILK	CEM	HP	ST	YG	CW	REA	MARB	FPI
13	-1.3	76	128	20	7	3	15	0.27	55	0.34	0.75	93.45
45%	30%	20%	10%	55%	40%	75%	40%	>95%	2%	85%	1%	3%

Balances and excels in multiple traits. 14.52 ADJ REA and 110 IMF Ratio. Top 1% MARB. Top 3% FPI. Top 10% YW. Homozygous Black and Top Dollar Angus Qualified.



LOT 30

31 LEM ENTICE 1052 ET



REG: AMGV1521549 | DOB: 12/28/20 | TAT: 1052H | 2.4GV, 96.9AN, 0.8AR

SYDGEN ENHANCE

MOGCK ENTICE

MOGCK ERICA 2255

BALDRIDGE COMMAND C036

MS COMMAND 917 ET

MS RESOURCE 626D ET

Homozygous Black
Polled Hybrid

ACT BW	ADJ WW
84	802
CALVING EASE	
★★	



CED	BW	WW	YW	MILK	CEM	HP	ST	YG	CW	REA	MARB	FPI
13	-0.2	81	140	22	5	2	14	0.15	50	0.53	0.76	96.47
45%	50%	10%	2%	35%	80%	85%	55%	>95%	5%	55%	1%	1%

This bull is the definition of a HOG! Out of a daughter to the 626 cow. This fella has been a standout since the first time we laid eyes on him. If you want a bull with lots of middle and straight up performance, this is your guy! Can you imagine the replacement females he will produce? 14.52 ADJ REA and 110 IMF Ratio. Top 1% MARB, FPI. Top 2% YW. Homozygous Black and Top Dollar Angus Qualified.



LOT 31

DNA & Ultrasound Data with Decades of A.I. & E.T.!
First Breeding Season Guarantee / Free Care Until April 1 and Free Delivery



BLACK HYBRID BULLS

REFERENCE PHOTO



REFERENCE SIRE S A V RESOURCE 1441

REFERENCE PHOTO



REFERENCE SIRE BALDRIDGE BRONC

REFERENCE PHOTO



REFERENCE SIRE BALDRIDGE COMMAND C036



LOT 32

CALVING EASE STARS

- ★★★★ Absolute Heifer Bull
- ★★★ Larger Heifers or Cows
- ★★ Young and Mature Cows
- ★ Mature Cows

32 LEM RESOURCE 1053 ET

REG: AMGV1522114 | DOB: 1/19/21 | TAT: 1053J | 4.7GV, 93.7AN, 1.7AR

RITO 707 OF IDEAL 3407 7075

S A V RESOURCE 1441

S A V BLACKCAP MAY 4136

CONNELLY CAPITALIST 028

MS CAPITALIST 619D ET

MS BLUESTEM 300 A ET

Homozygous Black
Polled Hybrid

ACT BW	ADJ WW
86	806

CALVING EASE

★★



CED	BW	WW	YW	MILK	CEM	HP	ST	YG	CW	REA	MARB	FPI
13	0.3	86	147	16	4	8	14	0.09	57	0.69	0.29	87.21
45%	65%	3%	1%	85%	90%	20%	55%	>95%	2%	25%	50%	15%

Will sire top performing steers and super replacement females, just like his donor dam. 14.59 ADJ REA and 1334 ADJ YW. Top 1% YW. Top 3% WW. Homozygous Black.

33 LEM BRONC 1054

REG: AMGV1523589 | DOB: 1/2/21 | TAT: 1054J | 6.3GV, 93.8AN

EF COMMANDO 1366

BALDRIDGE BRONC

BALDRIGE ISABEL Y69

MUSGRAVE 316 STUNNER

MS STUNNER 924 ET

MS PREDOMINANT 207 Z ET

Homozygous Black
Polled Hybrid

ACT BW	ADJ WW
70	705

CALVING EASE

★★★★



CED	BW	WW	YW	MILK	CEM	HP	ST	YG	CW	REA	MARB	FPI
16	-2.9	74	121	21	9	4	14	0.21	40	0.13	0.57	90.69
15%	10%	30%	15%	45%	15%	65%	55%	>95%	20%	>95%	10%	5%

10 EPDs and Indexes in the top 1/3 of the breed. Heifer bull with good growth and carcass. Homozygous Black and Top Dollar Angus Qualified.

34 LEM COMMAND 1055

REG: AMGV1523590 | DOB: 1/2/21 | TAT: 1055J | 4.7GV, 93.7AN, 1.7AR

EF COMMANDO 1366

BALDRIDGE COMMAND C036

BALDRIDGE BLACKBIRD A030

MUSGRAVE 316 STUNNER

MS STUNNER 952 ET

MS BLUESTEM 300 A ET

Homozygous Black
Polled Hybrid

ACT BW	ADJ WW
72	800

CALVING EASE

★★★



CED	BW	WW	YW	MILK	CEM	HP	ST	YG	CW	REA	MARB	FPI
15	-1.0	90	145	25	7	6	10	0.21	71	0.61	0.78	103.75
20%	35%	2%	1%	15%	40%	40%	95%	>95%	1%	40%	1%	1%

The first calf from the 952 Stunner female that we have high hopes for. She sure proven her worth with this first calf that is one of our favorite natural AI bulls this year. 14.57 ADJ REA, 800 ADJ WW, and 1395 ADJ YW. Top 1% YW, TM, CW, MARB, FPI. Homozygous Black and Top Dollar Angus Qualified.



LOT 32



35 LEM COMMAND 1057

REG: AMGV1523591 | DOB: 1/7/21 | TAT: 1057J | 12.5GV, 87.5AN



EF COMMANDO 1366
BALDRIDGE COMMAND C036
 BALDRIDGE BLACKBIRD A030
 S A V RESOURCE 1441
MISS RESOURCE 940
 MISS 401B

Homozygous Black
 Polled Hybrid
ACT BW ADJ WW
79 771
CALVING EASE
 ★★



CED	BW	WW	YW	MILK	CEM	HP	ST	YG	CW	REA	MARB	FPI
12	-0.8	83	137	22	4	5	10	0.14	62	0.53	0.56	92.59
55%	40%	10%	3%	35%	90%	50%	95%	>95%	1%	55%	10%	3%

Another one of the natural AI bulls that has stood out the whole way. His beautiful mother will be added to the donor pen this spring. 15.33 ADJ REA and 1331 ADJ YW. Top 1% CW. Top 3% YW, FPI. Homozygous Black and Top Dollar Angus Qualified.



36 LEM CAP 316 1058

REG: AMGV1523592 | DOB: 1/8/21 | TAT: 1058J | 2.4GV, 96.9AN, 0.8AR



CONNELY CAPITALIST 028
LD CAPITALIST 316
 LD DIXIE ERICA 2053
 BALDRIDGE COMMAND C036
MS COMMAND 916 ET
 MS RESOURCE 626D ET

Homozygous Black
 Polled Hybrid
ACT BW ADJ WW
80 771
CALVING EASE
 ★★★



CED	BW	WW	YW	MILK	CEM	HP	ST	YG	CW	REA	MARB	FPI
13	-1.0	89	142	20	7	6	7	0.15	55	0.43	0.52	95.29
45%	35%	2%	2%	55%	40%	40%	>95%	>95%	2%	75%	15%	2%

From a phenotypic standout 626 daughter. Power and Performance. 14.55 ADJ REA. Top 2% WW, YW, CW, FPI Top 15% MARB. Homozygous Black and Top Dollar Angus Qualified.

37 LEM BRONC 1059

REG: AMGV1523593 | DOB: 1/9/21 | TAT: 1059J | 6.3GV, 93.8AN



EF COMMANDO 1366
BALDRIDGE BRONC
 BALDRIGE ISABEL Y69
 DENSITY 564C ET
MS DENSITY 925 ET
 MS GAME BABE 732 ET

Homozygous Black
 Polled Hybrid
ACT BW ADJ WW
74 843
CALVING EASE
 ★★★★★



CED	BW	WW	YW	MILK	CEM	HP	ST	YG	CW	REA	MARB	FPI
18	-1.8	82	134	25	9	2	15	0.10	37	0.36	0.43	92.52
3%	20%	10%	4%	15%	15%	85%	40%	>95%	30%	85%	25%	3%

The first calf from one heck of a female in the 925 Density cow. ADJ BW of 79 with great calving ease EPDs while still coming out with a 1377 365-day weight. 14.79 ADJ REA. Top 3% CED, FPI. Top 4% YW, TM. Top 10% WW. Top 15% Milk, CEM, PG30. Homozygous Black and Top Dollar Angus Qualified.

THINGS TO CONSIDER WHEN BUYING BULLS

1. Does your seedstock provider invest in DNA and Carcass Ultrasound testing to give you the most accurate information possible?
2. Does your seedstock provider supply all weights and data or just what they want you to see?
3. Does your seedstock provider assist in marketing your calves? Have they taken the time, effort and money it takes to build relationships & trust with feedlot managers and order buyers that have seen the extra value in your cattle.
4. Is your seedstock provider an invested Top Dollar Angus partner? If so, do their cattle actually qualify or just want that logo in the catalog somewhere to give the impression they do?
5. Does your seedstock provider still stand behind their cattle with guarantees & not charge extra for "warranty" coverage?
6. Does your seedstock provider invest heavily in Embryo Transfer & the latest technology to give you an advantage?





LOT 38

38 LEM COMMAND 1061

REG: AMGV1523594 | DOB: 1/9/21 | TAT: 1061J | 3.2GV, 96.9AN



- | EF COMMANDO 1366
- BALDRIDGE COMMAND C036**
- | BALDRIDGE BLACKBIRD A030
- | BALDRIDGE BRONC
- LEM MISS BRONC 923**
- | MS CAPITALIST 709 ET

Homozygous Black
Polled Hybrid

ACT BW	ADJ WW
68	798
CALVING EASE	
★★★★	



CED	BW	WW	YW	MILK	CEM	HP	ST	YG	CW	REA	MARB	FPI
19	-2.2	89	150	24	9	6	17	0.25	61	0.33	0.54	99.49
2%	15%	2%	1%	20%	15%	40%	15%	>95%	1%	90%	10%	1%

The first natural calf from the elite cow that produced lots 11-13. To reiterate, she is THE FUTURE of our program. Take advantage of this opportunity to get a son of hers later in the sale that was another one of the AI standouts. Will sire moderate, easy keeping females. Great calving ease for as much thickness and power as he has. 5.0 ADJ IMF. Top 1% YW, CW, FPI. Top 2% CED, WW, TM. Top 10% MARB. Top 15% BW, CEM, PG30, STAY. Homozygous Black and Top Dollar Angus Qualified.



LOT 40

39 LEM BRONC 1062

REG: AMGV1523595 | DOB: 1/11/21 | TAT: 1062J | 6.3GV, 93.8AN

- | EF COMMANDO 1366
- BALDRIDGE BRONC**
- | BALDRIGE ISABEL Y69
- | S A V RESOURCE 1441
- MS RESOURCE 920 ET**
- | MS CAP 622D ET

Homozygous Black
Polled Hybrid

ACT BW	ADJ WW
78	771
CALVING EASE	
★★★★	



CED	BW	WW	YW	MILK	CEM	HP	ST	YG	CW	REA	MARB	FPI
16	-2.4	79	129	20	7	3	15	0.14	52	0.58	0.23	85.10
15%	15%	15%	10%	55%	40%	75%	40%	>95%	4%	45%	65%	20%

From the same beautiful cow that produced lot 16. 10 EPDs in the top 1/3 of the breed. Homozygous Black.

40 LEM UPGRADE 1065

REG: AMGV1524828 | DOB: 1/23/21 | TAT: 1065J | 2.4GV, 50SM, 46.7AN, 0.9XX



- | ELLINGSON LEGACY M229
- MR NLC UPGRADE U8676**
- | MS NLC MOJO S6119 B
- | BALDRIDGE BRONC
- MS BRONC 860 ET**
- | RIGHT KIND SISTER 6204D

Black
Polled Hybrid

ACT BW	ADJ WW
90	712
CALVING EASE	
★★	



CED	BW	WW	YW	MILK	CEM	HP	ST	YG	CW	REA	MARB	FPI
12	1.1	81	129	18	5	-1	11	-0.19	33	0.67	0.34	84.79
55%	80%	10%	10%	75%	80%	>95%	90%	30%	45%	25%	40%	20%

Attractive half-blood SimAngus. 14.82 ADJ REA. Top 1/2 of the breed in 12 EPDs. Top Dollar Angus Qualified.



41 LEM EXCLUSIVE 1066

REG: AMGV1523596 | DOB: 1/23/21 | TAT: 1066J | 6.3GV, 43.8AN, 50XX

- | LD CAPITALIST 316
- MUSGRAVE 316 EXCLUSIVE**
- | MUSGRAVE PRIM LASSIE 163-386
- | S A V RESOURCE 1441
- MS RESOURCE 825 ET**
- | MS CHARLO 505C ET

Homozygous Black
Polled Hybrid

ACT BW	ADJ WW
88	669

CALVING EASE
★★



CED	BW	WW	YW	MILK	CEM	HP	ST	YG	CW	REA	MARB	FPI
9	0.5	82	135	15	4	1	11	0.23	67	0.60	0.56	88.82
90%	70%	10%	3%	90%	90%	95%	90%	>95%	1%	40%	10%	10%

From the 825 cow that had 8 flush sons in the 2020 sale that averaged \$5,875. She is extremely easy on the eyes and is a great cow. Top 1% CW. Top 3% YW. Top 10% WW, MARB, FPI. Homozygous Black and Top Dollar Angus Qualified.

42 LEM RESOURCE 1068

REG: AMGV1523597 | DOB: 2/1/21 | TAT: 1068J | 12.5GV, 87.5AN

- | RITO 707 OF IDEAL 3407 7075
- S A V RESOURCE 1441**
- | S A V BLACKCAP MAY 4136
- | CONNEALY CAPITALIST 028
- MS CAP 621D ET**
- | MS MIDLAND 823U

Homozygous Black
Polled Hybrid

ACT BW	ADJ WW
82	782

CALVING EASE
★★



CED	BW	WW	YW	MILK	CEM	HP	ST	YG	CW	REA	MARB	FPI
14	-0.9	74	118	16	5	3	15	0.07	39	0.55	0.25	79.84
30%	35%	30%	20%	85%	80%	75%	40%	95%	25%	50%	60%	40%

Will add pounds and performance from a perfect uddered dam. 10 EPDs in the Top 1/2. Homozygous Black.



LOT 43

43 LEM DENVER 1070

REG: AMGV1524885 | DOB: 2/6/21 | TAT: 1070J | 21.9GV, 76.5AN, 1.7AR

- | EXAR DENVER 2002B
- TWIN OAK DENVER 823F ET**
- | MS C-CROSS EC / 7309T
- | CONNEALY CAPITALIST 028
- FAITH 500C ET**
- | MS BLUESTEM 300 A ET

Homozygous Black
Polled Hybrid

ACT BW	ADJ WW
89	771

CALVING EASE
★★



CED	BW	WW	YW	MILK	CEM	HP	ST	YG	CW	REA	MARB	FPI
15	1.4	79	126	22	8	11	17	0.11	42	0.31	0.27	81.07
20%	85%	15%	10%	35%	25%	5%	15%	>95%	20%	90%	55%	35%

A good bull out of probably the tamest cow in the herd. He resembles his mother in his power and performance. 14.76 ADJ REA. 10 EPDs in the top 1/4 of the breed. Homozygous Black.

44 LEM DENVER 1073

REG: AMGV1524883 | DOB: 3/10/21 | TAT: 1073J | 35.9GV, 64.1AN

- | EXAR DENVER 2002B
- TWIN OAK DENVER 823F ET**
- | MS C-CROSS EC / 7309T
- | TOP CHOICE 474 B ET
- MS TOP CHOICE 636D ET**
- | BRILLIANCE 140Y

Homozygous Black
Polled Balancer

ACT BW	ADJ WW
83	887

CALVING EASE
★★



CED	BW	WW	YW	MILK	CEM	HP	ST	YG	CW	REA	MARB	FPI
12	0.9	75	113	23	7	6	15	-0.05	42	0.57	0.47	83.89
60%	80%	30%	35%	25%	45%	35%	35%	55%	25%	30%	25%	30%

One of the two highest percent Gelbvieh bulls in the offering. 16.09 ADJ REA. Top 1/2 in 13 EPDs. Homozygous Black.

45 LEM DENVER 1071

REG: AMGV1524882 | DOB: 3/9/21 | TAT: 1071J | 35.9GV, 57.8AN, 6.3AR

- | EXAR DENVER 2002B
- TWIN OAK DENVER 823F ET**
- | MS C-CROSS EC / 7309T
- | B/R NEW FRONTIER 095
- MS NEW FRONTIER 201 Z ET**
- | MISS MACH ONE 652S ET

Black
Polled Balancer

ACT BW	ADJ WW
83	782

CALVING EASE
★★



CED	BW	WW	YW	MILK	CEM	HP	ST	YG	CW	REA	MARB	FPI
13	0.3	63	98	21	7	8	16	-0.04	36	0.43	0.52	78.91
45%	70%	80%	75%	40%	45%	20%	20%	60%	45%	65%	15%	60%

The other higher percent Gelbvieh bull in the sale. 117 IMF Ratio. Top 1/2 of the breed in 10 EPDs.

THANK YOU!



Pope Embryo Transfer



Delaney Clipping Services



F&S Ultrasounding



Angus Bulls

REFERENCE PHOTO



DAM OF LOTS 46-47 T/D FOREVER LADY 9185

46 LEM EXCLUSIVE 1036 ET

REG: AAA20182102 | DOB: 01/18/21 | TAT: 1036 | 100% ANGUS

LD Capitalist 316
Musgrave 316 Exclusive
 Musgrave Prim Lassie 163-386
 T/D Attila 711
T/D Forever Lady 9185
 JVC Forever Lady B444

ACT BW	ADJ WW
78	679
CALVING EASE	
★★★	



CED	BW	WW	YW	MILK	CEM	SEN	CW	MARB	RE	FAT
10	0.8	67	120	28	11	-20	54	0.88	0.89	0.018
20%	40%	30%	25%	30%	25%	65%	30%	20%	15%	60%
SM	SW	SF	SG	SB	SC					
61	75	102	64	165	275					
55%	20%	20%	15%	15%	15%					

From a female we purchased from TD Angus in their 2020 Spring Sale. Top 1/2 of the breed in CED, BW, WW, YW, RADG, CEM, Milk, MH, Claw, Angle, PAP, CA, Marb, RE, \$W, \$F, \$G, \$B, \$C. Top Dollar Angus Qualified.

47 LEM EXCLUSIVE 1037

REG: AAA20182103 | DOB: 01/19/21 | TAT: 1037 | 100% ANGUS

LD Capitalist 316
Musgrave 316 Exclusive
 Musgrave Prim Lassie 163-386
 T/D Attila 711
T/D Forever Lady 9185
 JVC Forever Lady B444

ACT BW	ADJ WW
74	695
CALVING EASE	
★★★	



CED	BW	WW	YW	MILK	CEM	SEN	CW	MARB	RE	FAT
10	0.8	67	120	28	11	-20	54	0.88	0.89	0.018
20%	40%	30%	25%	30%	25%	65%	30%	20%	15%	60%
SM	SW	SF	SG	SB	SC					
61	75	102	64	165	275					
55%	20%	20%	15%	15%	15%					

From a female we purchased from TD Angus in their 2020 Spring Sale. Top 1/2 in CED, BW, WW, YW, RADG, CEM, Milk, MH, Claw, Angle, PAP, CA, Marb, RE, \$W, \$F, \$G, \$B, \$C. Top Dollar Angus Qualified.

48 LEM EXCLUSIVE 1056

REG: AAA20182100 | DOB: 01/07/21 | TAT: 1056 | 100% ANGUS

LD Capitalist 316
Musgrave 316 Exclusive
 Musgrave Prim Lassie 163-386
 Sinclair Just In Time 7RT19
E&b Lady Just in Time 236
 E&B Lady Predestined 7100

ACT BW	ADJ WW
90	700
CALVING EASE	
★★	



CED	BW	WW	YW	MILK	CEM	SEN	CW	MARB	RE	FAT
7	0.3	43	78	20	10	10	25	0.79	0.43	0.040
45%	30%	90%	90%	85%	35%	4%	95%	30%	75%	85%
SM	SW	SF	SG	SB	SC					
69	40	69	52	121	226					
30%	95%	85%	35%	75%	65%					

Deep bodied, easy fleshing dam with a great udder. Top 1/2 of the breed in 11 EPDs.





LOT 49

49 LEM CAP 316 1060

REG: AAA20182099 | DOB: 01/09/21 | TAT: 1060 | 100% ANGUS

Connealy Capitalist 028
LD Capitalist 316
 LD Dixie Erica 2053
 Baldrige Bronc
Brookdale Progress 629
 Brookdale Progress 371

ACT BW	ADJ WW
83	763
CALVING EASE	
★★	



CED	BW	WW	YW	MILK	CEM	SEN	CW	MARB	RE	FAT
10	0.5	68	120	31	9	-20	55	0.71	0.58	0.056
20%	35%	25%	25%	15%	45%	65%	30%	35%	55%	95%
\$M	\$W	\$F	\$G	\$B	\$C					
74	76	95	49	144	261					
20%	20%	30%	40%	40%	25%					

From a heifer purchased from Brookdale Angus in their 2020 Spring Sale. Good bull that has always been a standout. Top 1/2 in CED, BW, WW, YW, HP, CEM, Milk, MH, Doc, Claw, Angle, CW, Marb, \$M, \$W, \$F, \$G, \$B, \$C. Top Dollar Angus Qualified.

50 LEM CAP 316 1063

REG: AAA20182101 | DOB: 01/18/21 | TAT: 1063 | 100% ANGUS

Connealy Capitalist 028
LD Capitalist 316
 LD Dixie Erica 2053
 Musgrave Aviator
Lem MS Aviator 926 Et
 MS Capitalist 642 Et

ACT BW	ADJ WW
74	869
CALVING EASE	
★★★★	



CED	BW	WW	YW	MILK	CEM	SEN	CW	MARB	RE	FAT
11	-0.5	74	126	25	13	-22	51	0.52	0.64	0.038
15%	15%	15%	20%	55%	10%	70%	40%	60%	45%	85%
\$M	\$W	\$F	\$G	\$B	\$C					
69	79	107	43	150	264					
30%	15%	15%	60%	30%	25%					

Out of one of our best young Angus cows in 926. Top 1/2 of the breed in CED, BW, WW, YW, RADG, DMI, CEM, Claw, Angle, PAP, CW, RE, \$M, \$W, \$F, \$B, \$C. Top Dollar Angus Qualified.

51 LEM CAP 316 1067

REG: AAA20189951 | DOB: 01/30/21 | TAT: 1067 | 100% ANGUS

Connealy Capitalist 028
LD Capitalist 316
 LD Dixie Erica 2053
 E&b Impression 380
MS Impression 513
 E&b Lady 8021 in Focus 215

ACT BW	ADJ WW
79	712
CALVING EASE	
★★★★	



CED	BW	WW	YW	MILK	CEM	SEN	CW	MARB	RE	FAT
17	-3	60	104	27	12	-8	43	0.77	0.65	0.042
\$M	\$W	\$F	\$G	\$B	\$C					
64	73	90	54	145	254					

EPDs listed are average of sire and dam. Top calving ease with good performance, carcass, and maternal traits. 513 is a model Angus cow with an ideal type udder.

52 LEM COMMAND 1069

REG: AAA20182098 | DOB: 02/02/21 | TAT: 1069 | 100% ANGUS

EF Commando 1366
Baldrige Command C036
 Baldrige Blackbird A030
 E&b Impression 380
Lem MS Impression 512
 E&b Lady Just in Time 236

ACT BW	ADJ WW
84	715
CALVING EASE	
★★★	



CED	BW	WW	YW	MILK	CEM	SEN	CW	MARB	RE	FAT
12	-0.7	49	88	26	9	-2	32	0.81	0.60	0.016
10%	15%	80%	80%	45%	45%	20%	85%	25%	50%	60%
\$M	\$W	\$F	\$G	\$B	\$C					
56	52	77	57	134	230					
70%	75%	70%	25%	55%	60%					

Heifer bull. Great uddered cow. Top 10% CED. Top 15% BW. Top 25% Marb.



Red Angus Bulls



LOT 53

53 LEM WORLDWIDE 1001 ET

REG: RAA 4493743 | DOB: 1/20/21 | TAT: 1001 | 100% AR

| SLGN WIDELOAD 920W

PELTON WIDELOAD 78B

| PELTON MISS JAYLA 0508S

| RREDS SENECA 731C

LEM MS SENECA 902 ET

| LEM REDEMPTION 616 ET

Category A
Red Angus

ACT BW ADJ WW

74 726

CALVING EASE

★★★

GENESEEEK
a Neogen Company

CED	BW	WW	YW	MILK	CEM	HP	ST	YG	CW	REA	MARB	FAT
12	-0.7	70	117	23	6	10	15	0.13	30	0.21	0.44	0.04
58%	71%	14%	11%	69%	78%	68%	54%	87%	17%	26%	41%	94%

PRO S	HERD	GRID
101	60	42
44%	60%	32%

Folks, this boy right here is special. Worldwide has real AI Sire potential and the ability to make lots of noise in the Red Angus breed while having the moxy to back it up. You don't see bulls that are this complete while doing things at such a high level every day. He and his flush mates rock a star-studded pedigree stacked with elite sires such as Pelton Wideload, RREDS Seneca, Bieber Rollin Deep, Benchmark Better Beef, UBAR High Capacity, and Brown JYJ Redemption just to name a few. The amount of natural thickness and muscle on this bull makes you fall in love with him at your first glance. He and his brothers are some of the best footed Wideload sons you will find due to the excellent females behind them.

He moves freely and is sound in his structure. We are confident these Wideloads will sire easy-coming calves that will put the pedal to the medal and grow like no other, just the way they did. Here's your chance to get a GREAT one! 14.77 ADJ REA, 1366 ADJ YW, and 74 ADJ BW. Top 1/2 ProS, GM, WW, YW, ADG, ME, Marb, CW, REA.

HERE'S YOUR CHANCE TO GET A GREAT ONE!



FLUSH BROTHERS LOTS 53-56

This set of flush brothers is as good of a group of Red Angus bulls that we have ever produced. They are backed by 3 donor females that have phenomenal feet, phenotype, and performance in LEM Seneca 902 ET, LEM Redemption 616 ET, and Six Mile Sierra 655A. These ladies would be at the top of any Red Angus herd in the country. These bulls show excellent muscle expression, fantastic phenotype, unmatched pedigrees, and check all the boxes that you would want out of an elite herd sire. Their mother is a flush mate to LEM Reliable, sold to Shaggy Meadows Red Angus in our 2020 sale. Their EPDs might not scream it, but they were born remarkably easy and really hit their stride this summer. They haven't looked back and headline a really good set of Red Angus bulls.

54 LEM WIDETOP 1002 ET

REG: RAA 4493745 | DOB: 1/19/21 | TAT: 1002 | 100% AR

SLGN WIDELoad 920W

PELTON WIDELoad 78B

PELTON MISS JAYLA 0508S

RREDS SENECA 731C

LEM MS SENECA 902 ET

LEM REDEMPTION 616 ET

Category A
Red Angus

ACT BW	ADJ WW
70	718

CALVING EASE
★★★



CED	BW	WW	YW	MILK	CEM	HP	ST	YG	CW	REA	MARB	FAT
10	-1.1	64	104	23	4	10	16	0.10	33	0.25	0.45	0.03
84%	64%	32%	32%	69%	93%	62%	45%	73%	11%	20%	39%	81%

PRO S	HERD	GRID
99	57	42
47%	65%	31%

Right next to his brother in terms of quality, power, and performance. The same things can be said about all these brothers in that they are powerful, eye

appealing, easy-calving, sound, and practical. 15.76 ADJ REA and 1347 ADJ YW. 10 EPDs in Top 1/2 of the breed.



LOT 54

55 LEM OVERLOAD 1003 ET

REG: RAA 4493747 | DOB: 1/18/21 | TAT: 1003 | 100% AR

SLGN WIDELoad 920W

PELTON WIDELoad 78B

PELTON MISS JAYLA 0508S

RREDS SENECA 731C

LEM MS SENECA 902 ET

LEM REDEMPTION 616 ET

Category A
Red Angus

ACT BW	ADJ WW
72	730

CALVING EASE
★★★



CED	BW	WW	YW	MILK	CEM	HP	ST	YG	CW	REA	MARB	FAT
10	-2.8	64	110	23	4	11	16	0.13	45	0.32	0.53	0.03
87%	31%	34%	21%	69%	94%	60%	44%	87%	1%	12%	23%	84%

PRO S	HERD	GRID
123	57	66
15%	64%	4%

Muscle combined with great phenotype and eye appeal. Great foot and leg structure just like his brothers. 14.54 ADJ REA and 1342 ADJ YW. 11 EPDs in Top 1/2 of the breed.



LOT 55

56 LEM WIDEBACK 1004 ET

REG: RAA 4493749 | DOB: 1/20/21 | TAT: 1004 | 100% AR

SLGN WIDELoad 920W

PELTON WIDELoad 78B

PELTON MISS JAYLA 0508S

RREDS SENECA 731C

LEM MS SENECA 902 ET

LEM REDEMPTION 616 ET

Category A
Red Angus

ACT BW	ADJ WW
70	686

CALVING EASE
★★★



CED	BW	WW	YW	MILK	CEM	HP	ST	YG	CW	REA	MARB	FAT
12	-3.3	65	115	23	6	11	14	0.09	29	0.30	0.50	0.04
60%	23%	29%	13%	69%	76%	45%	66%	69%	18%	14%	29%	92%

PRO S	HERD	GRID
110	56	54
30%	66%	13%

Complete and balanced with muscle, carcass, and good calving ease. 11 EPDs in Top 1/2 of the breed.



LOT 56





LOT 57

57 LEM WIDELOAD 1005 ET

REG: RAA 4493751 | DOB: 1/18/21 | TAT: 1005 | 100% AR

SLGN WIDELOAD 920W
 PELTON WIDELOAD 78B
 PELTON MISS JAYLA 0508S
 PIE ONE OF A KIND 352
 LEM ONEKIND 929 ET
 LEM MS DIRECTION 712 ET

Category A Red Angus	
ACT BW	ADJ WW
76	746
CALVING EASE	
★★★	



CED	BW	WW	YW	MILK	CEM	HP	ST	YG	CW	REA	MARB	FAT
10	-1.2	79	131	24	6	9	12	0.12	33	0.09	0.39	0.02
80%	62%	3%	2%	65%	74%	90%	85%	82%	11%	52%	53%	56%

PRO S 77 | **HERD** 37 | **GRID** 40
 83% | 92% | 36%

Complete herd sire prospect here. The 929 donor dam is a model Red Angus cow sired by PIE One of a Kind with a big square hip and a perfect udder. Heavy made with good bone and a big ribeye. 14.14 ADJ REA. Top 2% WW. Top 3% YW, ADG.

58 LEM WIDELOAD 1006 ET

REG: RAA 4493753 | DOB: 1/19/21 | TAT: 1006 | 100% AR

SLGN WIDELOAD 920W
 PELTON WIDELOAD 78B
 PELTON MISS JAYLA 0508S
 PIE ONE OF A KIND 352
 LEM ONEKIND 929 ET
 LEM MS DIRECTION 712 ET

Category A Red Angus	
ACT BW	ADJ WW
75	605
CALVING EASE	
★★★	



CED	BW	WW	YW	MILK	CEM	HP	ST	YG	CW	REA	MARB	FAT
12	-2.9	64	110	24	6	9	17	0.14	33	0.29	0.52	0.05
66%	29%	35%	20%	65%	62%	80%	28%	88%	10%	15%	25%	97%

PRO S 117 | **HERD** 64 | **GRID** 53
 21% | 50% | 14%

Very complete with no holes. Stout and sound with good bone and feet. He'll sire steers with performance. Keep every heifer! 14% GM. Top Dollar Angus Qualified.



LOT 60

59 LEM SENECA 1007 ET

REG: RAA 4493755 | DOB: 1/20/21 | TAT: 1007 | 100% AR

BIEBER ROLLIN DEEP Y118
 RREDS SENECA 731C
 RREDS ASTER 309A
 PIE ONE OF A KIND 352
 LEM ONEKIND 934 ET
 LEM MS DIRECTION 712 ET

Category A Red Angus	
ACT BW	ADJ WW
78	666
CALVING EASE	
★★★	



CED	BW	WW	YW	MILK	CEM	HP	ST	YG	CW	REA	MARB	FAT
12	-2.5	73	120	23	7	12	15	0.15	37	0.21	0.27	0.04
54%	36%	9%	8%	71%	55%	34%	64%	92%	6%	26%	83%	91%

PRO S 87 | **HERD** 56 | **GRID** 31
 69% | 67% | 57%

Seneca son from the beautiful, cherry red 934 donor dam. Well balanced and complete from phenotype to numbers. Has calving ease, performance, and carcass. This flush produced a large batch of heifers and we love every one of them. Expect similar results with the daughters of this bull and his brother. Top 6% CW. Top 8% YW, ADG. Top 9% WW.

60 LEM SENECA 1008 ET

REG: RAA 4493757 | DOB: 1/19/21 | TAT: 1008 | 100% AR

BIEBER ROLLIN DEEP Y118
 RREDS SENECA 731C
 RREDS ASTER 309A
 PIE ONE OF A KIND 352
 LEM ONEKIND 934 ET
 LEM MS DIRECTION 712 ET

Category A Red Angus	
ACT BW	ADJ WW
80	728
CALVING EASE	
★★★	



CED	BW	WW	YW	MILK	CEM	HP	ST	YG	CW	REA	MARB	FAT
12	-1.1	72	114	23	6	12	17	0.11	40	0.25	0.30	0.03
61%	64%	11%	14%	71%	64%	28%	24%	79%	4%	20%	77%	70%

PRO S 105 | **HERD** 72 | **GRID** 32
 38% | 33% | 54%

Another powerful Seneca son from the 934 flush. Long and deep made with a big square hip. Tracks straight and covers his step in a nice stride with good feet. Will sire big performance and carcass while maintaining good calving ease. Top 4% CW. Top 11% WW. Top 14% YW.



61 LEM SENECA 1009 ET



REG: RAA 4493759 | DOB: 1/20/21 | TAT: 1009 | 100% AR

BIEBER ROLLIN DEEP Y118

RREDS SENECA 731C

RREDS ASTER 309A

BROWN JYJ REDEMPTION Y1334

LEM REDEMPTION 616 ET

SIX MILE SIERA 655A

Category A
Red Angus

ACT BW	ADJ WW
82	718

CALVING EASE
★★★



CED	BW	WW	YW	MILK	CEM	HP	ST	YG	CW	REA	MARB	FAT
14	-0.3	77	127	21	7	12	17	0.10	42	0.31	0.38	0.03
31%	78%	5%	4%	86%	46%	28%	32%	76%	3%	13%	55%	74%

PRO S	HERD	GRID
130	81	49
10%	20%	19%

A full sibling to LEM Reliable and the dam of lots 53-56. 616's combination with Seneca has proven to be a complete success and here's an opportunity to get in on it. Our Seneca's have shown to be consistent in their performance, calving ease, and docility. 115 IMF Ratio. Top 3% CW. Top 4% YW, ADG. Top 5% WW. Top 10% ProS. Top 13% REA. Top 19% GM. Top Dollar Angus Qualified.



LOT 61

62 LEM ALLEGIANCE 1010 ET



REG: RAA 4493761 | DOB: 1/19/21 | TAT: 1010 | 100% AR

LEACHMAN PLEDGE A282Z

HXC ALLEGIANCE 5502C

HXC 100Y

ANDRAS NEW DIRECTION R240

LEM MS DIRECT 840 ET

SIX MILE SIERA 655A

Category A
Red Angus

ACT BW	ADJ WW
85	831

CALVING EASE
★★



CED	BW	WW	YW	MILK	CEM	HP	ST	YG	CW	REA	MARB	FAT
9	-0.2	67	117	24	3	14	11	0.11	56	0.46	0.64	0.03
91%	79%	22%	11%	64%	98%	10%	92%	79%	1%	4%	10%	72%

PRO S	HERD	GRID
111	27	84
28%	97%	1%

Performance and carcass specialist. From a moderate-framed, deep-bodied New Direction daughter. Expect him to sire top performing feeder cattle. 135 IMF Ratio, 14.06 ADJ REA, and 1346 ADJ YW. Top 1% GM, CW. Top 4% REA. Top 5% ADG. Top 10% HPG, MARB. Top 11% YW. Top Dollar Angus Qualified.



LOT 62

63 LEM ALLEGIANCE 1011 ET



REG: RAA 4493763 | DOB: 1/17/21 | TAT: 1011 | 100% AR

LEACHMAN PLEDGE A282Z

HXC ALLEGIANCE 5502C

HXC 100Y

ANDRAS NEW DIRECTION R240

LEM MS DIRECT 840 ET

SIX MILE SIERA 655A

Category A
Red Angus

ACT BW	ADJ WW
84	727

CALVING EASE
★★



CED	BW	WW	YW	MILK	CEM	HP	ST	YG	CW	REA	MARB	FAT
12	-2.3	56	97	24	4	14	16	0.12	35	0.24	0.73	0.04
63%	40%	63%	47%	64%	92%	13%	50%	84%	8%	21%	4%	89%

PRO S	HERD	GRID
123	56	67
14%	66%	4%

Long made performance bull. Very similar to his brother. 141 IMF Ratio. Top 4% GM, Marb. Top 8% CW. Top 14% ProS. Top Dollar Angus Qualified.



LOT 63



64 LEM THUNDER 1012

REG: RAA 4502291 | DOB: 2/7/21 | TAT: 1012 | 96.9% AR 3.1% XX

ANDRAS THUNDER R225
HXC 5550C
 HXC 178Y
 HXC IRON ORE 4429B
LEM IRON ORE 602
 LEM MISS RED ALERT 349

Category B Red Angus	
ACT BW	ADJ WW
83	772
CALVING EASE	
★★★	



CED	BW	WW	YW	MILK	CEM	HP	ST	YG	CW	REA	MARB	FAT
16	-2.5	53	85	23	8	8	16	0.07	21	0.19	0.36	0.03
14%	36%	75%	73%	70%	25%	92%	39%	58%	45%	29%	60%	82%

PRO S	HERD	GRID
104	66	38
38%	46%	40%

His dam is an easy-fleshing problem free cow that produces well every year. This guy is balanced with good calving ease. 14.96 ADJ REA. 11 EPDs in the Top 1/2 of the breed.

65 LEM LEGEND 1013

REG: RAA 4502293 | DOB: 2/12/21 | TAT: 1013 | 87.5% AR 12.5% XX

BROWN BLW LEGEND A1965
ALC MR LEGEND F49
 ALC MISS KING B417
 HXC 0116X
LEM MISS 324
 MS 901

Category B Red Angus	
ACT BW	ADJ WW
82	669
CALVING EASE	
★★★	



CED	BW	WW	YW	MILK	CEM	HP	ST	YG	CW	REA	MARB	FAT
13	-2.5	50	80	20	7	12	15	-0.03	17	0.26	0.49	0.01
46%	36%	83%	80%	92%	57%	30%	58%	12%	61%	18%	32%	30%

PRO S	HERD	GRID
108	64	44
33%	50%	27%

9 year-old easy-fleshing cow that is a solid produces year-in and year-out. 14.34 ADJ REA. 12 EPDs in the Top 1/2 of the breed.



LOT 67

66 LEM LEGEND 1014

REG: AMGV1529590 | DOB: 2/22/21 | TAT: 1014J | 9.0GV, 90.6AR

BROWN BLW LEGEND A1965
ALC MR LEGEND F49
 ALC MISS KING B417
 HXC CONQUEST 4405P
MS CONQUEST 530C
 MS FAT TONY 328 A

Red Polled Hybrid	
ACT BW	ADJ WW
90	718
CALVING EASE	
★★★	



CED	BW	WW	YW	MILK	CEM	HP	ST	YG	CW	REA	MARB	FPI
13	-2.5	62	99	24	8	1	15	0.04	17	0.15	0.41	78.78
45%	15%	80%	60%	20%	25%	95%	40%	90%	95%	>95%	25%	45%

From a beautiful, wide, and deep cow. Will sire some excellent females. 15.33 ADJ REA and 1301 ADJ YW. 9 EPDs in Top 1/2.

67 LEM FINISH PRODUCT 1015

REG: RAA 4502295 | DOB: 1/10/21 | TAT: 1015 | 100% AR

COLLIER FINAL PRODUCT B389
COLLIER FINISHED PRODUCT
 COLLIER AMY B385
 RREDS SENECA 731C
LEM MS SENECA 902 ET
 LEM REDEMPTION 616 ET

Category A Red Angus	
ACT BW	ADJ WW
65	736
CALVING EASE	
★★★★	



CED	BW	WW	YW	MILK	CEM	HP	ST	YG	CW	REA	MARB	FAT
17	-3.0	61	107	23	8	15	16	0.17	28	0.09	0.37	0.05
7%	27%	47%	26%	66%	22%	7%	44%	95%	21%	52%	58%	95%

PRO S	HERD	GRID
123	82	42
14%	18%	32%

The natural AI calf from the dam of Lot 53-56. Sure fire heifer bull that maintains solid growth. Will sire great heifers. 13 EPDs in Top 1/2 of the breed.



68 LEM LEGEND 1016

REG: AMGV1529592 | DOB: 2/16/21 | TAT: 1016J | 18.0GV, 81.3AR, 0.8AN

BROWN BLW LEGEND A1965
 ALC MR LEGEND F49
 ALC MISS KING B417
 RED NORTHLINE FAT TONY 605U
 MS FAT TONY 328 A
 STARLIGHT 130

Red
 Polled Hybrid
ACT BW 88 **ADJ WW** 704
CALVING EASE
 ★★★



CED	BW	WW	YW	MILK	CEM	HP	ST	YG	CW	REA	MARB	FPI
12	-0.5	64	102	24	7	0	14	-0.01	21	0.26	0.33	75.88
55%	45%	70%	55%	20%	40%	>95%	55%	85%	90%	95%	40%	60%

From a super wide and deep 9-year-old brood cow that always raises a top calf. 14.2 ADJ REA and 117 IMF Ratio. 6 EPD in Top 1/2 of the breed.

69 LEM WIDELOAD1017

REG: RAA 4502297 | DOB: 1/12/21 | TAT: 1017 | 100% AR

SLGN WIDELOAD 920W
 PELTON WIDELOAD 78B
 PELTON MISS JAYLA 0508S
 RREDS SENECA 731C
 LEM MS SENECA 903 ET
 LEM REDEMPTION 616 ET

Category A
 Red Angus
ACT BW 83 **ADJ WW** 757
CALVING EASE
 ★★



CED	BW	WW	YW	MILK	CEM	HP	ST	YG	CW	REA	MARB	FAT
10	-2.0	62	99	23	5	12	11	0.12	23	0.05	0.44	0.03
82%	46%	40%	42%	71%	85%	36%	90%	82%	37%	61%	41%	79%

PRO S 67 **HERD** 38 **GRID** 29 | 8 EPDs in the Top 1/2 of the breed.

93%	91%	61%
-----	-----	-----

70 LEM FRANCHISE 1018

REG: RAA 4502299 | DOB: 1/9/21 | TAT: 1018 | 100% AR

SPUR FRANCHISE OF GARTON
 9 MILE FRANCHISE 6305
 C-BAR ABIGRACE Y11
 HXC ALLEGIANCE 5502C
 LEM ALLEGIANCE 936 ET
 SIX MILE SIERA 655A

Category A
 Red Angus
ACT BW 76 **ADJ WW** 743
CALVING EASE
 ★★★



CED	BW	WW	YW	MILK	CEM	HP	ST	YG	CW	REA	MARB	FAT
14	-1.6	66	117	30	8	15	14	0.10	47	0.46	0.67	0.04
32%	54%	26%	11%	13%	21%	6%	68%	74%	1%	4%	7%	86%

PRO S 149 **HERD** 69 **GRID** 80 | Top carcass numbers, good growth and calving ease. Top 1% GM, CW. Top 3% ProS. Top 4% ADG, REA. Top 7% Marb. Top 11% YW. Top Dollar Angus Qualified.



71 LEM FRANCHISE 1019

REG: RAA 4502301 | DOB: 1/14/21 | TAT: 1019 | 100% AR

SPUR FRANCHISE OF GARTON
 9 MILE FRANCHISE 6305
 C-BAR ABIGRACE Y11
 RREDS SENECA 731C
 LEM MS SENECA 904 ET
 LEM REDEMPTION 616 ET

Category A
 Red Angus
ACT BW 78 **ADJ WW** 757
CALVING EASE
 ★★★★★



CED	BW	WW	YW	MILK	CEM	HP	ST	YG	CW	REA	MARB	FAT
14	-3.5	62	108	29	9	10	16	0.09	38	0.45	0.40	0.05
34%	20%	43%	23%	17%	17%	61%	37%	68%	5%	4%	52%	96%

PRO S 121 **HERD** 71 **GRID** 50 | Heifer bull with good carcass traits. 123 IMF Ratio. 13 EPDs in the top 1/2 of the breed.



REFERENCE SIRE 9 MILE FRANCHISE 6305





LOT 73

Females

4 REGISTERED RED ANGUS HEIFERS

Selling all of these 2021 born heifers from the top of our replacements. All are potential future donors!



LOT 74

73 LEM MS SENECA 122

REG: RAA 4513323 | DOB: 01-16-2021 | TAT: 122 | 100% AR

| BIEBER ROLLIN DEEP Y118

RREDS SENECA 731C

| RREDS ASTER 309A

| PIE THE COWBOY KIND 343

LEM MS COWKIND 864 ET

| HXC 372A

Category A
Red Angus

ACT BW	ADJ WW
64	582



CED	BW	WW	YW	MILK	CEM	HP	ST	YG	CW	REA	MARB	FAT
13	-3.1	62	104	22	6	10	14	0.13	30	0.19	0.26	0.04
39%	25%	41%	33%	75%	62%	63%	66%	86%	16%	29%	85%	91%

PRO S	HERD	GRID
75	47	28
86%	82%	64%

Seneca daughters are highly valued for their maternal ability, phenotype, calm dispositions, and producing ability. 122 combines beauty, power, and herd bull producing potential in a long and deep made package with calving ease and performance built in. Her dam, 864, is a beautiful, deep bodied brood cow.

74 LEM MS THUNDER 165

REG: RAA 4513313 | DOB: 03-20-2021 | TAT: 165 | 100% AR

| ANDRAS THUNDER R225

HXC 5550C

| HXC 178Y

| BROWN JYJ REDEMPTION Y1334

LEM REDEMPTION 610 ET

| SIX MILE SIERA 655A

Category A
Red Angus

ACT BW	ADJ WW
71	641



CED	BW	WW	YW	MILK	CEM	HP	ST	YG	CW	REA	MARB	FAT
15	-2.7	58	100	20	8	9	14	0.05	26	0.20	0.42	0.02
20%	32%	57%	40%	91%	29%	83%	66%	43%	29%	28%	45%	49%

PRO S	HERD	GRID
109	58	51
31%	63%	16%

Long, deep, and balanced. Dam is a beautiful, dark red cow that's long, deep, good uddered, and a good producer. 165 would be great to show, then go on to be a super brood cow.





LOT 75



LOT 76

75 LEM MS LEGEND 170

REG: RAA 4535139 | DOB: 03-04-2021 | TAT: 170 | 100% AR

BROWN BLW LEGEND A1965

ALC MR LEGEND F49

ALC MISS KING B417

BROWN JYJ REDEMPTION Y1334

LEM REDEMPTION 616 ET

SIX MILE SIERA 655A

Category A
Red Angus

ACT BW	ADJ WW
69	629



CED	BW	WW	YW	MILK	CEM	HP	ST	YG	CW	REA	MARB	FAT
12	-2.2	57	97	22	6	13	16	0.09	28	0.14	0.45	0.02
59%	41%	60%	46%	75%	67%	19%	51%	70%	23%	41%	38%	66%

PRO S	HERD	GRID
114	68	46
25%	43%	24%

Rare opportunity to purchase a natural daughter from the 616 donor cow, sired by our herd sire legend. Expect her to mature into a beautiful,

heavy producing brood cow that raises the good ones. Super complete, eye-catching heifer.

76 LEM MS LEGEND 155

REG: RAA 4513325 | DOB: 02-27-2021 | TAT: 155 | 100% AR

BROWN BLW LEGEND A1965

ALC MR LEGEND F49

ALC MISS KING B417

PIE THE COWBOY KIND 343

LEM MS COWKIND 867 ET

HXC 372A

Category A
Red Angus

ACT BW	ADJ WW
69	680



CED	BW	WW	YW	MILK	CEM	HP	ST	YG	CW	REA	MARB	FAT
13	-2.4	65	109	26	6	12	15	0.10	25	0.07	0.51	0.02
48%	38%	31%	23%	37%	66%	27%	57%	73%	30%	56%	27%	59%

PRO S	HERD	GRID
104	57	47
39%	65%	22%

Fancy heifer that's sharp-made and feminine. Deep-bodied and clean made with that dark cherry red color. Would make a great show heifer and brood cow.

30 COMMERCIAL RED ANGUS OPEN HEIFERS!

We are again offering Red Angus commercial open heifers. All home-raised and from the heart of our commercial herd. All heifers have been on a complete vaccination program, including bangs, poured, and pelvic examined. Heifers sell in groups of 3 with the winning bidder having the option to roll more groups of 3 to fill their need. This will allow everyone the opportunity to purchase top quality Red Angus heifers no matter how few or how many are desired.

Lot 77: 100, 101, 102

Lot 82: 115, 116, 117

Lot 78: 103, 104, 105

Lot 83: 118, 119, 120

Lot 79: 106, 107, 108

Lot 84: 121, 122, 123

Lot 80: 109, 110, 111

Lot 85: 124, 125, 126

Lot 81: 112, 113, 114

Lot 86: 127, 128, 129

10 COMMERCIAL RED ANGUS BRED HEIFERS!

Consigned by Drudik Cattle. Jason Drudik: 402-621-0269 Peyton Drudik: 402-621-0778

10 commercial Red Angus bred heifers home-raised by Drudik Cattle from Lemke Cattle genetics. Fully vaccinated and poured. Bred to calving-ease registered Red Angus bulls. Sell in groups of 5 with the winning bidder having the option to roll the next 5.

Lot 87: 5 Red Angus Bred Heifers

Lot 88: 5 Red Angus Bred Heifers



WE APPRECIATE OUR CUSTOMERS!

thank you



WE APPRECIATE OUR CUSTOMERS!



ALSO THANK YOU
TO OUR COOPERATORS!

Diamond A Land & Cattle
M E Land & Cattle

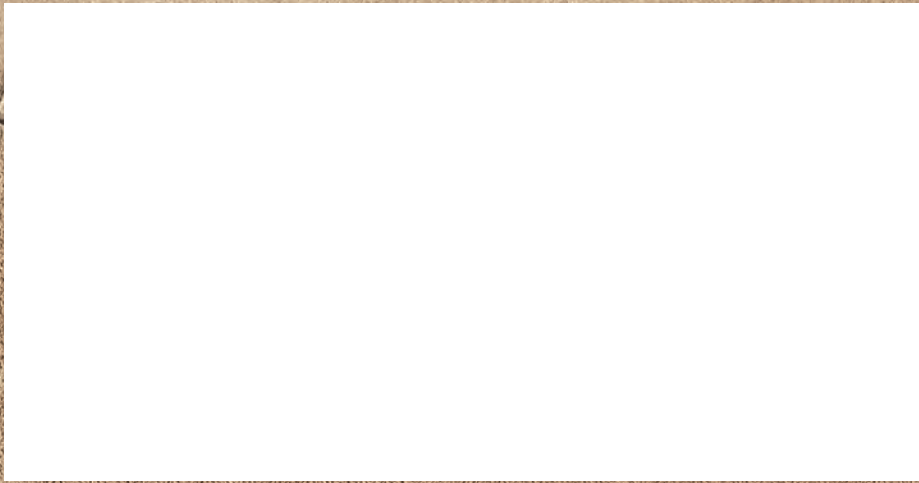


LEMKE CATTLE ANNUAL BULL & HEIFER SALE



FRIDAY, FEBRUARY 11, 2022 - 1:30 PM

Lemke Cattle
1757 Road 2500
Lawrence, NE 68957



16th Annual Bull & Heifer Sale

FEBRUARY 11, 2022
LEMKE SALE FACILITY | LAWRENCE, NE



LOT 1 by Musgrave 316 Exclusive



LOT 13 by S A V Renown 3439



LOT 53 by Pelton Wideload 78B



LOT 73 by RREDS Seneca 731C