

# LEMKE CATTLE



*17th Annual Bull and Heifer Sale*

**FEBRUARY 10, 2023 - 1:30 PM**

**AT THE RANCH - LAWRENCE, NEB**

*Selling*

**70 Angus, Red Angus, Angus Hybrid Bulls**

**Plus 7 Registered & 8 Commercial Red Angus Open Heifers**





## Welcome to Lemke Cattle



Thank you for your interest in our 17th Annual Lemke Cattle Bull & Heifer Sale! Over half of the sale offering are ET's from our elite donors. We continue to multiply our top genetics from our leading donors through our aggressive ET program which provides groups of top quality brothers. One of our goals is to provide our customers with the most progressive and proven genetics out there to give you an ADVANTAGE. Our genetics give you that ADVANTAGE with the ability to produce value added cattle whether retaining replacement heifers, marketing unweaned calves, backgrounded feeders, bred heifers or finished cattle.

Our program gives you an ADVANTAGE with decades of investment in AI and ET genetics while also investing in DNA technology to give you the most accurate Genomic Enhanced EPDs possible. More ADVANTAGES include: developing bulls for longevity, carcass ultrasound testing, vaccination and fertility testing protocols, first breeding season guarantees, marketing assistance and producing genetics with the ability to qualify for elite marketing programs like Top Dollar Angus. Real genetic value and satisfied customers is our primary goal.

We are excited to have Russell Reds join us this year in offering several elite Red Angus show heifer/brood cow prospects. They are special!

Please join us Friday, February 10th at the ranch south of Lawrence, NE and enjoy good cattle, good food, and good people!

SINCERELY,  
THE LEMKE FAMILY



**LEMKECATTLE.COM**

- |                               |      |                        |
|-------------------------------|------|------------------------|
| <b>CALVING<br/>EASE STARS</b> | ★★★★ | Absolute Heifer Bull   |
|                               | ★★★  | Larger Heifers or Cows |
|                               | ★★   | Young and Mature Cows  |
|                               | ★    | Mature Cows            |

**RANDY, LESLIE, SAMMY & MATT,  
TAYLOR, AND TANNER LEMKE**  
Randy: 402-469-2284 / Tanner: 402-984-4596  
Email: rlemke@gtmc.net

### DIRECTIONS TO THE SALE SITE

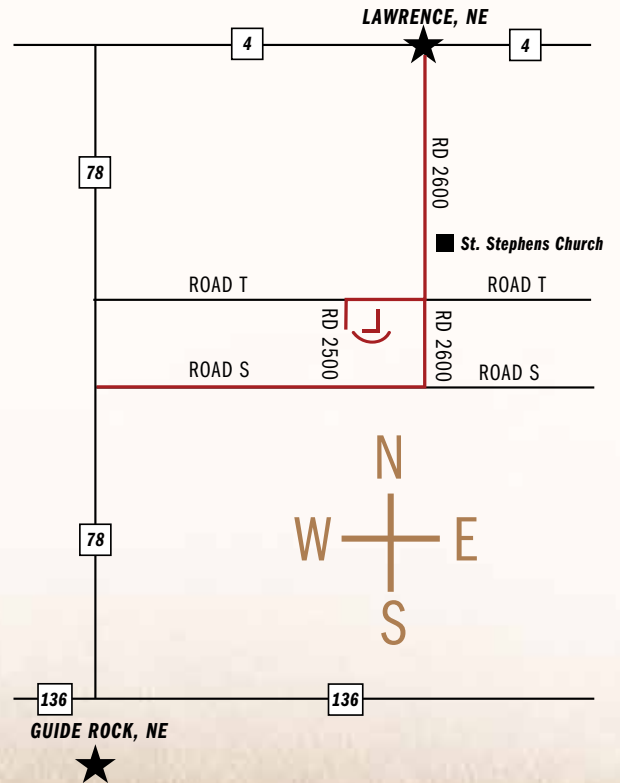
1757 Road 2500 / Lawrence, NE 68957

**From Lawrence, Nebraska**

3 Miles South on Road 2600

1 Mile West on Road T

1/4 Mile South on Road 2500



# 17th Annual Bull Sale

## FEBRUARY 10, 2023

1:30 PM – LEMKE SALE FACILITY – LAWRENCE, NE

### SALE DAY CONTACTS

Home/Sale Barn --- 402-756-7090  
Randy Lemke --- 402-469-2284  
Tanner Lemke --- 402-984-4596  
Leslie Lemke --- 402-469-5589

### ONLINE BIDDING & VIDEOS

For general questions, please contact  
the office at 402-316-5460.

**DVAuction**  
Broadcasting Real-Time Auctions

### AUCTIONEER

Matt Lowery --- 308-750-6119

### REPRESENTATIVES

Cattle Business Weekly, Chris Beutler 402-380-8244  
Tri State Livestock News, Jake St. Amant 308-568-9084  
Livestock Plus, Randy Rasby 308-539-6195

### ACCOMODATIONS

Blue Hill Motel, Blue Hill, NE --- 402-756-3901  
Comfort Inn, Hastings, NE --- 402-463-5252

**LUNCH** A beef meal will be provided sale day starting at 12:00 PM.

### ABSENTEE BIDDING

Call Randy a few days prior to the auction. We can take bids over the phone during the auction, have designated bidders for you, or bid live on DV Auction, whichever you feel comfortable with. All absentee bids will be handled with integrity and professionalism.

### GUARANTEE

All bulls are covered 100% to be sound & fertile. Buyers of all bulls selling for \$4,000 or more that sustain injury during first breeding season will have 100% credit at the next sale at the value of purchase minus \$2,000 salvage value. Contact Lemke Cattle promptly in this event, we usually have replacement bulls available. Breeding season is defined as the 90 day period following the first turnout of a bull.

### FEEDING

The bulls are fed a high roughage ration so they develop, not get fat. Customer feedback has been that the bulls hold up very well.

**VOLUME** 2 Bulls -- 1% / 3 Bulls -- 2%  
**DISCOUNTS** 4 Bulls -- 3% / 5 Bulls -- 4%

### ANNOUNCEMENTS

Any announcements made sale day will take precedence over any information printed in the catalog.

### HEALTH

All bulls are on a complete health program. Vaccinated with IBR, BVD Type I and II, P13, BRSV, Pasturella, 7-way, Haemophilus, wormed and poured. All bulls have tested negative BVD.

Stephen Russell, DVM --- 785-527-0594

**All bulls will have passed a fertility test and examination.**

### SALE SUPPLEMENT

A sale supplement sheet with ultrasound data, scrotal measurements, and yearling weights will be available sale day.

### DELIVERY

Free delivery of bulls in Nebraska and Northern Kansas, or meet at central locations. Transportation of females is the responsibility of the buyer and must be picked up within two days of the sale. We'll be happy to assist with transportation and females will be fed and cared for until picked up.

### FREE CARE

Bulls will be fed and cared for at purchaser's risk until April 1st. Bulls may be fed after April 1st at the cost of \$4.00 per head per day. Any bulls picked up within 3 days of sale will have \$100 deducted from the purchase price.

### LIABILITY

Every precaution will be taken to protect the safety and comfort of those attending the sale. All persons attending the sale do so at their own risk and neither the owner or sale staff assume any responsibility or liability, legal, or otherwise for any accidents occurring in or about the premises.

### SEMEN INTEREST

Lemke Cattle will retain a 1/3 semen interest in any bull selling. Buyer receives full possession and salvage value.

### EMBRYO TRANSPLANT CALVES

Embryo Transplant Calves are born to and raised from a recipient cow, therefore the actual birth and weaning weights are not an accurate representation of the calves performance. EPD's give a much more accurate picture of their true genetic potential.

**All bulls have been tested and are free of genetic defects.**

Reliable Leading Genetics



# Black Angus Sires



## S A V RESOURCE 1441

ANGUS

R R Rito 707  
**Rito 707 of Ideal 3407 7075**  
 Ideal 3407 of 1418 076  
 S A V 8180 Traveler 004  
**S A V Blackcap May 4136**  
 S A V May 2397

**REG**  
 17016597  
**DOB**  
 1/7/2011  
**TATTOO**  
 1441

CED	BW	WW	YW	SC	CEM	MILK
0	4.1	69	131	1.10	0	17
MARB	RE	\$W	\$F	\$G	\$B	\$C
-0.10	1.04	51	84	25	109	195



## LD CAPITALIST 316

ANGUS

S A V Final Answer 0035  
**Connealy Capitalist 028**  
 Prides Pita of Conanga 8821  
 C A Future Direction 5321  
**LD Dixie Erica 2053**  
 LD Dixie Erica Oar 0853

**REG**  
 17666102  
**DOB**  
 1/26/2013  
**TATTOO**  
 316

CED	BW	WW	YW	SC	CEM	MILK
12	-0.6	65	113	0.44	11	25
MARB	RE	\$W	\$F	\$G	\$B	\$C
0.69	0.62	78	101	51	152	267



## MUSGRAVE 316 EXCLUSIVE

ANGUS

Connealy Capitalist 028  
**LD Capitalist 316**  
 LD Dixie Erica 2053  
 Musgrave Foundation  
**Musgrave Prim Lassie 163-386**  
 SCR Prim Lassie 80634

**REG**  
 18130471  
**DOB**  
 2/06/2015  
**TATTOO**  
 1175

CED	BW	WW	YW	SC	CEM	MILK
8	0.6	68	122	1.09	12	28
MARB	RE	\$W	\$F	\$G	\$B	\$C
0.90	0.74	68	101	63	164	289



## MOGCK ENTICE

ANGUS

SydGen Exceed 3223  
**SydGen Enhance**  
 SydGen Rita 2618  
 Mogck Sure Shot 253  
**MOGCK Erica 2255**  
 MOGCK Erica 2162

**REG**  
 18952921  
**DOB**  
 01/31/2017  
**TATTOO**  
 2577

CED	BW	WW	YW	SC	CEM	MILK
2	2.2	77	142	2.17	-8	33
MARB	RE	\$W	\$F	\$G	\$B	\$C
0.89	0.76	80	102	70	172	284



## HXC GRINDSTONE 9908G

RED ANGUS

LEACHMAN PLEDGE A282Z  
**HXC ALLEGIANCE 5502C**  
 HXC 100Y  
 SPUR FRANCHISE OF GARTON  
**HXC 605D**  
 HXC 905W

**REG**  
 4187454  
**DOB**  
 2/04/2019  
**TATTOO**  
 9908G

PRO S	HERD	GRID	CED	BW	WW	YW
121	36	85	9	0.5	73	125
MILK	CEM	STAY	MARB	YG	CW	REA
26	4	14	0.69	0.07	54	0.56



## PELTON WIDELOAD 78B

RED ANGUS

UBAR HIGH CAPACITY 224  
**SLGN WIDELOAD 920W**  
 MEADO-WEST PERSUASION  
 NEO-SHO DIRECT TICKET M517  
**PELTON MISS JAYLA 0508S**  
 PELTONS MISS CORY 5037N

**REG**  
 1704763  
**DOB**  
 2/20/2014  
**TATTOO**  
 78B

PRO S	HERD	GRID	CED	BW	WW	YW
77	25	52	10	-1.9	65	106
MILK	CEM	STAY	MARB	YG	CW	REA
28	4	12	0.71	0.05	20	0.23



## BIEBER CL STOCKMARKET E119

RED ANGUS

LSF SAGA 1040Y  
**PIE STOCKMAN 4051**  
 PIE LAKOTA 046  
 ANDRAS FUSION R236  
**BIEBER CL ADELLE 475C**  
 BIEBER ADELLE 297Y

**REG**  
 3751659  
**DOB**  
 9/22/2017  
**TATTOO**  
 E119

PRO S	HERD	GRID	CED	BW	WW	YW
145	63	81	17	-5.0	76	128
MILK	CEM	STAY	MARB	YG	CW	REA
24	10	18	1.27	0.15	22	0.29



## RREDS SENECA 731C

RED ANGUS

BIEBER ROOSEVELT W384  
**BIEBER ROLLIN DEEP Y118**  
 BIEBER TILLY 399W  
 BECKTON EPIC R397 K  
**RREDS ASTER 309A**  
 MLK CRK ASTER 175

**REG**  
 3491307  
**DOB**  
 3/1/2015  
**TATTOO**  
 731C

PRO S	HERD	GRID	CED	BW	WW	YW
54	52	2	12	-2.5	74	118
MILK	CEM	STAY	MARB	YG	CW	REA
19	7	15	0.06	0.20	34	0.32





# OVER 2/3 OF THE OFFERING QUALIFIES!

## PREMIUM CALF VALUE

*Easy as 1-2-3*

### Want MORE for your steers?

THAT'S EASY ...

1. Purchase Top Dollar Angus-qualified bulls.
2. Raise Top Dollar Angus-qualified feeder calves.
3. Pocket MORE per head!



### THE RESULTS:

Better performance and a documented \$84.26-per-head advantage as fed cattle!

The PROOF is in your bank account.

Steers & Heifers	Top Dollar Angus Qualified	Non-Qualified	Difference
Head Count	1,801	4,448	
Percentage of Head Count	29%	71%	
Average Daily Gain	4.28	3.99	0.29
Hot Carcass Weight	935	888	47
Marbling	504	471	33
Ribeye Area	15.4	15.2	0.2
Fat Thickness	0.66	0.61	0.05
<b>Value Per Head</b>	<b>\$1,626.13</b>	<b>\$1,541.86</b>	<b>\$84.26</b>

Top Dollar Angus has the necessary resources to provide third-party genetic verification of high-quality Angus and Red Angus-influenced feeder calves and females. Combining genetic verification with our extensive network of seedstock partners and feedyards allows Top Dollar Angus to deliver the unique ability of marketing assistance to our customers and truly connect people to people and people to profit.

Source: Neogen field study representing five feed yards and 6,249 head.



Read about satisfied steer-sellers.

Click the QR code:



*Contact us for a free, no-obligation consultation!*



Nate Smith, General Manager

(620) 546-4839 • nate@topdollarangus.com

Kaytlin Hokanson • (307) 461-7687 • kaytlin@topdollarangus.com

Andy Albrecht • (402) 922-1000 • andy@topdollarangus.com

[www.topdollarangus.com](http://www.topdollarangus.com)







# Semen Available!

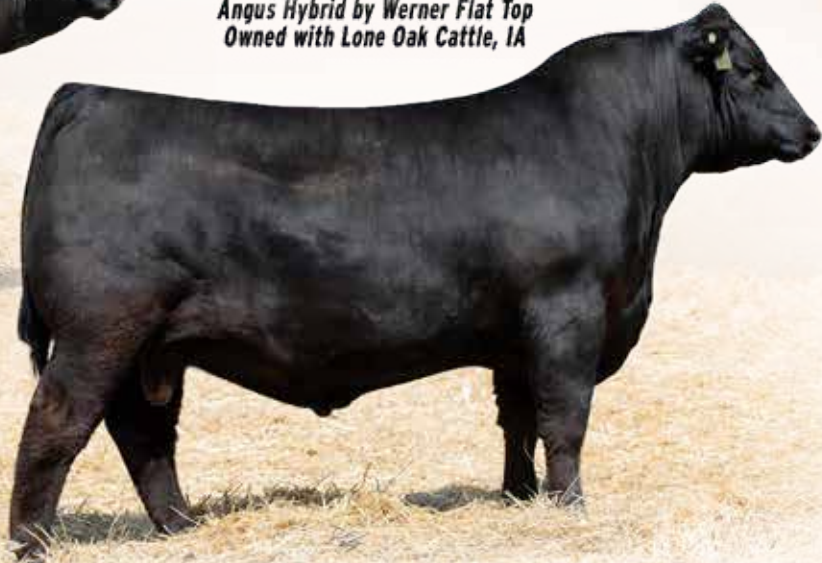
LEM *Heavy Impact* 1020

Angus Hybrid by Exclusive  
Owned with Lone Oak Cattle, IA



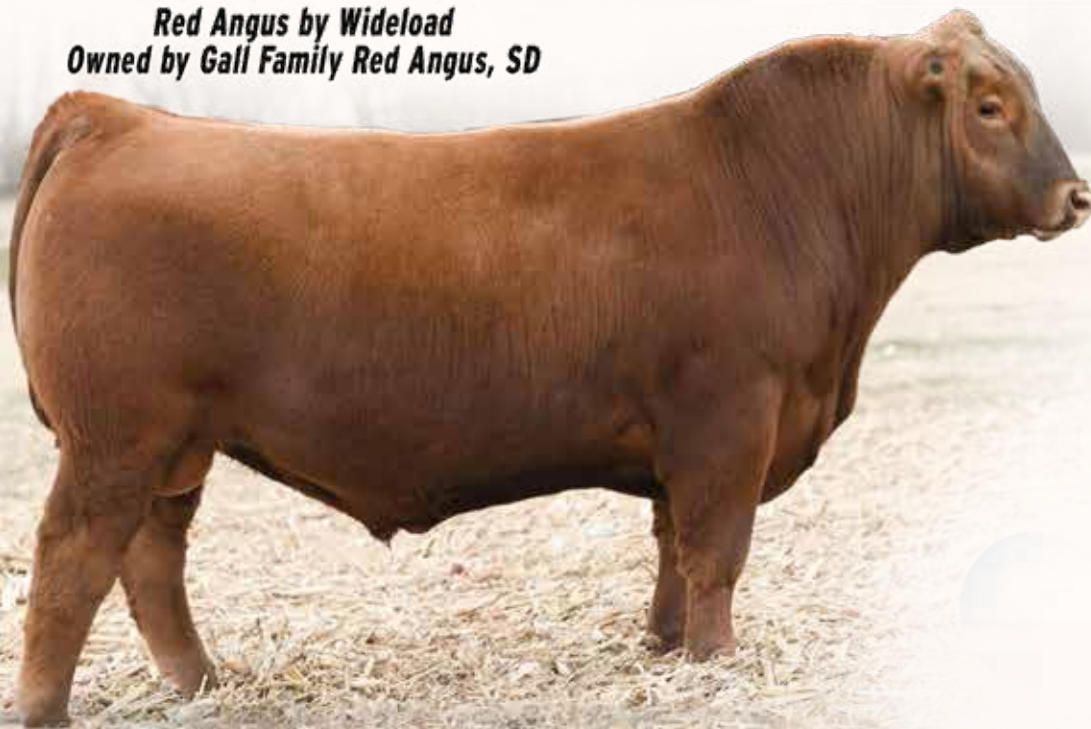
LEM *Gladiator* 1039

Angus Hybrid by Werner Flat Top  
Owned with Lone Oak Cattle, IA



LEM *Worldwide* 1001

Red Angus by Wideload  
Owned by Gall Family Red Angus, SD



SEMEN AVAILABLE ON  **SIRE BUYER**





# Black Hybrid Bulls

# Hybrid

## FLUSH BROTHERS LOTS 1-2

We start the catalog with a pair of high growth Entice sons. Their dam is a daughter of the prolific 626 cow that has routinely sired heavy muscled, thick calves that pack lots of power. We are excited to see her daughters begin to fill her shoes. These attractive bulls will add lots of performance & carcass merit while hailing from a highly productive maternal pedigree.



LOT 1



GRANDDAM OF LOTS 1-2 LEM MS RESOURCE 626D ET



LOT 2

Lot

## 1 LEM ATTRACTION 2050 ET

REG: AMGV1552919 | DOB: 1/16/22 | TAT: 2050 | 2.4GV, 96.9AN, 0.8AR

SYDGEN ENHANCE

Sire MOGCK ENTICE

MOGCK ERICA 2255

BALDRIDGE COMMAND C036

Dam MS COMMAND 025 ET

MS RESOURCE 626D ET

CE	BW	WW	YW	MILK	CEM	HP	ST	YG	CW	REA	MARB	FPI
13	-1.6	88	147	22	0	5	11	0.14	49	0.46	0.68	100.33
45%	25%	3%	1%	35%	>95%	55%	90%	>95%	10%	70%	3%	1%

- Stylish bull calf that will sire heavy, high performing steers, and daughters like his prolific grandam.
- Top 1% YW, FPI. Top 3% WW, MARB. Top 5% DOC. Top 10% CW, TM. Top 20% BW.
- Homozygous Black and Top Dollar Angus Qualified.

Homozygous Black  
Polled

ACT BW ADJ WW  
82 808

CALVING EASE  
★★★



Lot

## 2 LEM ENTICE 2051 ET

REG: AMGV1552920 | DOB: 1/17/22 | TAT: 2051 | 2.4GV, 96.9AN, 0.8AR

SYDGEN ENHANCE

Sire MOGCK ENTICE

MOGCK ERICA 2255

BALDRIDGE COMMAND C036

Dam MS COMMAND 025 ET

MS RESOURCE 626D ET

CE	BW	WW	YW	MILK	CEM	HP	ST	YG	CW	REA	MARB	FPI
10	1.6	94	161	22	-1	5	10	0.21	60	0.45	0.56	96.17
85%	90%	1%	1%	35%	>95%	55%	95%	>95%	2%	70%	10%	2%

- Massively long and thick bull with an attractive EPD profile.
- Top 1% WW, YW. Top 2% DOC, CW, FPI. Top 3% TM. Top 10% MARB.
- Homozygous Black and Top Dollar Angus Qualified.

Homozygous Black  
Polled

ACT BW ADJ WW  
85 756

CALVING EASE  
★★







## FLUSH BROTHERS LOTS 3-8

This mating has proven to be successful & reliable time & time again. 717 has sold 8 Resource sons for an average of \$6,875, including the 2021 high-seller to Zimmerman Ranch, LEM Deep Impact 0404 ET. The females in this bloodline have excellent udder-quality and are known for persistently being among the top producers in the herd. These bulls have always been consistent in their thickness & power, but their sisters make us even more excited about the daughters they will leave behind.

### Lot 3 LEM REVIVAL 2049 ET

REG: AMGV1552152 | DOB: 1/17/22 | TAT: 2049 | 9.4GV, 87.5AN, 3.2AR

RITO 707 OF IDEAL 3407 7075

Sire S A V RESOURCE 1441

S A V BLACKCAP MAY 4136

CONNELY CAPITALIST 028

Dam MS CAPITAL 717 ET

MS FRONTIER 039X ET

Homozygous Black  
Polled

ACT BW 84 ADJ WW 696

CALVING EASE  
★★



FULL BROTHER OF LOTS 3-8 LEM DEEP IMPACT 0404 ET

CED	BW	WW	YW	MILK	CEM	HP	ST	YG	CW	REA	MARB	FPI
12	0.7	74	119	16	4	4	14	-0.02	44	0.69	0.35	80.57
60%	75%	30%	20%	90%	90%	65%	60%	80%	15%	25%	40%	40%

- Super thick and muscular bull that stands out among his peers. Has everything you want in a power bull and has good carcass numbers for a Resource son. Will sire high performing, thick calves and great daughters!
- Top 10% PG30, SC. Top 15% CW. Top 20% YW. Top 25% DOC, CREA.
- Homozygous Black.





# Black Hybrid Bulls



**LOT 4**

Lot **4**

## LEM RESOURCE 2048 ET

REG: AMGV1552151 | DOB: 1/13/22 | TAT: 2048 | 9.4GV, 87.5AN, 3.2AR

RITO 707 OF IDEAL 3407 7075

Sire **S A V RESOURCE 1441**

S A V BLACKCAP MAY 4136

CONNELLY CAPITALIST 028

Dam **MS CAPITAL 717 ET**

MS FRONTIER 039X ET

Homozygous Black  
Polled

ACT BW	ADJ WW
88	718

**CALVING EASE**

★★



CED	BW	WW	YW	MILK	CEM	HP	ST	YG	CW	REA	MARB	FPI
13	0.9	78	129	16	4	4	16	0.12	46	0.52	0.34	82.12
45%	80%	20%	10%	90%	90%	65%	30%	>95%	10%	60%	40%	35%

- Heavy made, thick Resource son. Will make a great herd bull!
- Top 10% YW, PG30, SC, CW. Top 20% WW.
- Homozygous Black and Top Dollar Angus Qualified.



**LOT 5**

Lot **5**

## LEM RESOURCE 2047 ET

REG: AMGV1552150 | DOB: 1/16/22 | TAT: 2047 | 9.4GV, 87.5AN, 3.2AR

RITO 707 OF IDEAL 3407 7075

Sire **S A V RESOURCE 1441**

S A V BLACKCAP MAY 4136

CONNELLY CAPITALIST 028

Dam **MS CAPITAL 717 ET**

MS FRONTIER 039X ET

Homozygous Black  
Polled

ACT BW	ADJ WW
83	688

**CALVING EASE**

★★



CED	BW	WW	YW	MILK	CEM	HP	ST	YG	CW	REA	MARB	FPI
12	-0.4	75	128	16	4	4	15	0.14	48	0.47	0.43	83.81
60%	50%	30%	10%	90%	90%	65%	45%	>95%	10%	70%	25%	25%

- Another quality power bull like his brothers.
- Top 10% YW, PG30, SC, CW. Top 25% MARB.
- Homozygous Black and Top Dollar Angus Qualified.



**LOT 6**

Lot **6**

## LEM RESOURCE 2046 ET

REG: AMGV1552149 | DOB: 1/15/22 | TAT: 2046 | 9.4GV, 87.5AN, 3.2AR

RITO 707 OF IDEAL 3407 7075

Sire **S A V RESOURCE 1441**

S A V BLACKCAP MAY 4136

CONNELLY CAPITALIST 028

Dam **MS CAPITAL 717 ET**

MS FRONTIER 039X ET

Homozygous Black  
Polled

ACT BW	ADJ WW
84	779

**CALVING EASE**

★★



CED	BW	WW	YW	MILK	CEM	HP	ST	YG	CW	REA	MARB	FPI
13	0.6	82	136	16	4	4	16	-0.03	46	0.70	0.24	82.96
45%	70%	10%	4%	90%	90%	65%	30%	75%	10%	20%	65%	30%

- Very thick and stout calf that had the highest weaning weight of his flush.
- Top 4% YW. Top 10% WW, PG30, SC, CW. Top 20% STAY, CREA.
- Homozygous Black.





Lot **7** **LEM RESOURCE 2076 ET**



REG: AMGV1552696 | DOB: 1/18/22 | TAT: 2076 | 9.4GV, 87.5AN, 3.2AR

RITO 707 OF IDEAL 3407 7075

Sire **S A V RESOURCE 1441**

S A V BLACKCAP MAY 4136

CONNEALY CAPITALIST 028

Dam **MS CAPITAL 717 ET**

MS FRONTIER 039X ET

Polled	
<b>ACT BW</b>	<b>ADJ WW</b>
<b>83</b>	<b>703</b>
<b>CALVING EASE</b>	



CED	BW	WW	YW	MILK	CEM	HP	ST	YG	CW	REA	MARB	FPI
<b>12</b>	<b>0.5</b>	<b>79</b>	<b>133</b>	<b>16</b>	<b>4</b>	<b>4</b>	<b>15</b>	<b>0.07</b>	<b>48</b>	<b>0.58</b>	<b>0.33</b>	<b>83.01</b>
60%	70%	15%	5%	90%	90%	65%	45%	95%	10%	45%	45%	30%



Lot **8** **LEM RESOURCE 2074 ET**

REG: AMGV1552694 | DOB: 1/16/22 | TAT: 2074 | 9.4GV, 87.5AN, 3.2AR

RITO 707 OF IDEAL 3407 7075

Sire **S A V RESOURCE 1441**

S A V BLACKCAP MAY 4136

CONNEALY CAPITALIST 028

Dam **MS CAPITAL 717 ET**

MS FRONTIER 039X ET

Homozygous Black	
Polled	
<b>ACT BW</b>	<b>ADJ WW</b>
<b>87</b>	<b>722</b>
<b>CALVING EASE</b>	
★★	



CED	BW	WW	YW	MILK	CEM	HP	ST	YG	CW	REA	MARB	FPI
<b>10</b>	<b>1.3</b>	<b>79</b>	<b>132</b>	<b>16</b>	<b>3</b>	<b>4</b>	<b>17</b>	<b>0.08</b>	<b>46</b>	<b>0.65</b>	<b>0.30</b>	<b>80.67</b>
85%	85%	15%	10%	90%	95%	65%	20%	95%	10%	30%	50%	40%

- Top 5% YW. Top 10% PG30, SC, CW. Top 15% WW. Top 20% STAY.
- Homozygous Black.





# Black Hybrid Bulls



**LOT 9**



DAM OF LOT 9 LEM MS RESOURCE 626D ET



FULL BROTHER OF LOT 9 LEM HEAVY IMPACT 1020 ET

## Lot 9 LEM EXCLUSIVE 2075 ET

REG: AMGV1552695 | DOB: 1/17/22 | TAT: 2075 | 4.7GV, 93.8AN, 1.6AR

LD CAPITALIST 316

Sire MUSGRAVE 316 EXCLUSIVE

MUSGRAVE PRIM LASSIE 163-386

S A V RESOURCE 1441

Dam MS RESOURCE 626D ET

MS FINAL ANSWER 121Y

Homozygous Black  
Polled

**ACT BW** **ADJ WW**  
86 818

**CALVING EASE**  
★★



CED	BW	WW	YW	MILK	CEM	HP	ST	YG	CW	REA	MARB	FPI
12	0.4	93	153	17	6	4	8	0.25	44	0.33	0.53	95.60
60%	70%	1%	1%	85%	60%	65%	>95%	>95%	15%	90%	10%	2%

- This calf is a full brother to the 8 lead-off Exclusive sons from last year's sale that averaged \$9,625, including the 2 high-selling blacks, LEM Heavy Impact 1020 ET to Lone Oak Cattle and LEM Shockwave 1028 ET to Zimmerman Ranch. His dam, LEM MS Resource 626D ET, has been one of the most prolific cows in our program's history, averaging \$8,031 over 16 bull calves sold & producing numerous retained daughters, some of which have found their way to the donor pen. This bull is heavy-made, stout-boned, and carries an impressive set of EPDs.
- Top 1% YW. Top 2% WW. Top 3% FPI. Top 10% MARB.
- Homozygous Black and Top Dollar Angus Qualified.





**LOT 10**

## FLUSH BROTHERS LOTS 10-II

These Exclusive sons come from one of the most attractive cows in our herd. She is an ideal Resource daughter with power, growth, great feet, a quality udder, and an exciting future. She has sold 8 sons for an average of \$5,750. These bulls have lots of growth, carcass, and look.

*Lot*  
**10 LEM ABSOLUTE 2055 ET**

REG: AMGV1552156 | DOB: 1/14/22 | TAT: 2055 | 6.3GV, 93.8AN

LD CAPITALIST 316


*Sire* MUSGRAVE 316 EXCLUSIVE

MUSGRAVE PRIM LASSIE 163-386

S A V RESOURCE 1441

*Dam* MS RESOURCE 825 ET

MS CHARLO 505C ET



Homozygous Black  
Polled

<b>ACT BW</b>	<b>ADJ WW</b>
<b>81</b>	<b>753</b>
<b>CALVING EASE</b>	
★★	



CED	BW	WW	YW	MILK	CEM	HP	ST	YG	CW	REA	MARB	FPI
14	-0.1	84	134	15	6	4	10	0.12	51	0.48	0.51	90.95
30%	55%	10%	5%	95%	60%	65%	95%	>95%	5%	65%	15%	10%

- One of the top bulls in the offering. He possesses tons of mass, performance, and thickness. Will sire awesome daughters.
- Top 2% DOC. Top 5% CW. Top 10% WW, YW, FPI. Top 15% MARB.
- Homozygous Black and Top Dollar Angus Qualified.



DAM OF LOTS 10-11 LEM MS RESOURCE 825 ET

*Lot*  
**11 LEM EXCLUSIVE 2054 ET**

REG: AMGV1552155 | DOB: 1/10/22 | TAT: 2054 | 6.3GV, 93.8AN

LD CAPITALIST 316


*Sire* MUSGRAVE 316 EXCLUSIVE

MUSGRAVE PRIM LASSIE 163-386

S A V RESOURCE 1441

*Dam* MS RESOURCE 825 ET

MS CHARLO 505C ET



Homozygous Black  
Polled

<b>ACT BW</b>	<b>ADJ WW</b>
<b>84</b>	<b>668</b>
<b>CALVING EASE</b>	
★★	



CED	BW	WW	YW	MILK	CEM	HP	ST	YG	CW	REA	MARB	FPI
11	-0.4	73	120	15	4	4	14	0.09	55	0.64	0.54	85.21
70%	50%	35%	20%	95%	90%	65%	60%	>95%	3%	35%	10%	20%

- Quality bull with good carcass and maternal pedigree.
- Top 3% CW. Top 10% MARB. Top 15% DOC. Top 20% FPI. Top 25% YW.
- Homozygous Black and Top Dollar Angus Qualified.



**LOT 11**



## FLUSH BROTHERS LOTS 12-13

These two heifer bull prospects come from an exciting young donor who's first 3 sons averaged \$9,667 last year. These bulls will bring maternal strength, carcass quality, fleshing ease, and quality-uddered daughters.



DAM OF LOTS 12-13 LEM MISS BRONC 923

### Lot 14 LEM EXCLUSIVE 2056

REG: AMGV1552698 | DOB: 1/26/22 | TAT: 2056 | 9.4GV, 86.7AN, 3.9AR

LD CAPITALIST 316

Sire MUSGRAVE 316 EXCLUSIVE

MUSGRAVE PRIM LASSIE 163-386

COLEMAN CHARLO 0256

Dam LEM MS CHARLO 540

MS IRON MOUNTAIN 202 Z ET

CED	BW	WW	YW	MILK	CEM	HP	ST	YG	CW	REA	MARB	FPI
11	-1.0	73	118	19	4	1	10	0.16	48	0.35	0.89	94.16
70%	35%	35%	25%	65%	90%	95%	95%	>95%	10%	85%	1%	3%

- Standout Exclusive son since birth. Power, performance, and correct in his structure. Perfect-uddered Charlo dam is a long, deep tank.
- Top 1% MARB. Top 3% FPI. Top 10% CW. Top 20% YW.
- Homozygous Black and Top Dollar Angus Qualified.

Homozygous Black Polled

ACT BW	ADJ WW
86	823

CALVING EASE  
★★



### Lot 12 LEM ENTICE 2052 ET

REG: AMGV1552153 | DOB: 1/13/22 | TAT: 2052 | 3.2GV, 96.9AN

SYDGEN ENHANCE

Sire MOGCK ENTICE

MOGCK ERICA 2255

BALDRIDGE BRONC

Dam LEM MISS BRONC 923

MS CAPITALIST 709 ET

CED	BW	WW	YW	MILK	CEM	HP	ST	YG	CW	REA	MARB	FPI
15	-1.4	86	146	24	2	6	12	0.18	65	0.49	0.61	97.57
20%	25%	4%	2%	20%	>95%	40%	85%	>95%	1%	65%	5%	2%

- Maternal pedigree and attractive look with good EPD profile.
- Top 1% CW. Top 2% YW, FPI. Top 5% WW, TM, DOC, MARB. Top 20% CED, Milk, PG30. Top 25% BW.
- Homozygous Black and Top Dollar Angus Qualified.

Homozygous Black Polled

ACT BW	ADJ WW
79	670

CALVING EASE  
★★★★



### Lot 13 LEM ENTICE 2053 ET

REG: AMGV1552154 | DOB: 1/12/22 | TAT: 2053 | 3.2GV, 96.9AN

SYDGEN ENHANCE

Sire MOGCK ENTICE

MOGCK ERICA 2255

BALDRIDGE BRONC

Dam LEM MISS BRONC 923

MS CAPITALIST 709 ET

CED	BW	WW	YW	MILK	CEM	HP	ST	YG	CW	REA	MARB	FPI
13	-0.8	87	151	24	1	6	11	0.19	62	0.35	0.56	95.91
45%	40%	3%	1%	20%	>95%	40%	90%	>95%	1%	85%	10%	2%

- Top 1% YW, CW. Top 2% FPI. Top 4% WW, TM. Top 10% MARB.
- Homozygous Black and Top Dollar Angus Qualified.

Homozygous Black Polled

ACT BW	ADJ WW
82	667

CALVING EASE  
★★★



### Lot 15 LEM RESOLVE 2059

REG: AMGV1554211 | DOB: 1/21/22 | TAT: 2059 | 6.3GV, 93.8AN

S A V RENOWN 3439

Sire COLEMAN RESOLVE 7219

COLEMAN DONNA 714

S A V RESOURCE 1441

Dam MS RESOURCE 920 ET

MS CAP 622D ET

CED	BW	WW	YW	MILK	CEM	HP	ST	YG	CW	REA	MARB	FPI
10	0.4	82	137	17	2	7	12	0.08	53	0.61	0.20	81.37
85%	70%	10%	4%	85%	>95%	30%	85%	95%	4%	40%	75%	40%

- Stout, long made performance bull. From a top producing cow family.
- Top 4% YW, CW.
- Homozygous black by birthright. Top Dollar Angus Qualified.

Black Polled

ACT BW	ADJ WW
90	711

CALVING EASE  
★★



**ONLINE BIDDING AND VIDEOS** The sale will be broadcast live on DVAuction.com with videos available two weeks prior to the sale. Visit DVAuction.com and register at least 24 hours prior to the sale in order to receive your bidder number.

For general questions, please contact the office at 402-316-5460.





Lot **16** **LEM DENVER 2062**

REG: AMGV1552697 | DOB: 2/16/22 | TAT: 2062 | 29.7GV, 70.3AN

EXAR DENVER 2002B

Sire **TWIN OAK DENVER 823F ET**

MS C-CROSS EC / 7309T

PA FULL POWER 1208

Dam **MS FULL POWER 719 ET**

MS NET WORTH 210 Z ET

Homozygous Black  
Polled Balancer  
**ACT BW** **ADJ WW**  
**78** **791**  
**CALVING EASE**  
★★★



CED	BW	WW	YW	MILK	CEM	HP	ST	YG	CW	REA	MARB	FPI
16	-1.0	73	119	22	8	5	9	0.01	37	0.38	0.53	87.91
15%	40%	40%	25%	35%	30%	50%	>95%	80%	40%	75%	15%	20%

- Combines power & style in a clean made package. From a model cow with a perfect udder. 12 EPDs in the top half of the breed.
- Top 15% CED, MARB.
- Homozygous black and Top Dollar Angus Qualified.



**LOT 16**

Lot **17** **LEM EXCLUSIVE 2080**

REG: AMGV1556829 | DOB: 1/7/22 | TAT: 2080 | 3.2GV, 96.9AN

LD CAPITALIST 316

Sire **MUSGRAVE 316 EXCLUSIVE**

MUSGRAVE PRIM LASSIE 163-386

BALDRIDGE COMMAND C036

Dam **MS COMMAND 019 ET**

MS RESOURCE 825 ET

Homozygous Black  
Polled  
**ACT BW** **ADJ WW**  
**73** **700**  
**CALVING EASE**  
★★★★



CED	BW	WW	YW	MILK	CEM	HP	ST	YG	CW	REA	MARB	FPI
14	-1.5	79	132	17	6	4	11	0.17	56	0.47	0.65	93.34
30%	25%	15%	10%	85%	60%	65%	90%	>95%	2%	70%	4%	4%

- Exclusive son with performance, maternal, and carcass traits at the top.
- Top 3% CW. Top 4% MARB, FPI. Top 10% YW. Top 20% WW. Top 25% BW.
- Homozygous black by birthright. Top Dollar Angus Qualified.



**LOT 17**

Lot **18** **LEM RESOURCE 2068**

REG: AMGV1552010 | DOB: 1/21/22 | TAT: 2068 | 4.7GV, 93.7AN, 1.7AR

RITO 707 OF IDEAL 3407 7075

Sire **S A V RESOURCE 1441**

S A V BLACKCAP MAY 4136

CONNEALY CAPITALIST 028

Dam **MS CAPITALIST 619D ET**

MS BLUESTEM 300 A ET

Homozygous Black  
Polled  
**ACT BW** **ADJ WW**  
**80** **731**  
**CALVING EASE**  
★★



CED	BW	WW	YW	MILK	CEM	HP	ST	YG	CW	REA	MARB	FPI
15	0.3	76	126	15	6	8	14	0.09	45	0.37	0.45	85.00
20%	65%	25%	10%	95%	60%	20%	60%	>95%	15%	85%	20%	20%

- Thick, long, & balanced. The 619 cow gets the job done every year. This is the 5th Resource sired bull she'd produced that made the sale. Several daughters retained in our herd.
- Top 10% YW. Top 15% DOC, SC, CW. Top 20% CED, HP, MARB, FPI.
- Homozygous Black and Top Dollar Angus Qualified.



**LOT 18**



# Black Hybrid Bulls



**LOT 19**

Lot **19 LEM EMPIRE 2071**

REG: AMGV1558526 | DOB: 1/28/22 | TAT: 2071 | 18.8GV, 81.3AN

CONNEALY CAPITALIST 028

Sire **LEM DENSITY 564C ET**

MS NET WORTH 341 A

BUFORD BLUESTEM 9974

Dam **MS BLUESTEM 416B ET**

MS FRONTIER 736T

Double Black  
Polled

**ACT BW ADJ WW**  
86 756

**CALVING EASE**  
★★



CED	BW	WW	YW	MILK	CEM	HP	ST	YG	CW	REA	MARB	FPI
13	0.2	74	119	22	7	4	15	0.04	44	0.56	0.48	84.99
45%	65%	30%	20%	35%	40%	65%	45%	90%	15%	50%	15%	20%

- Well balanced and thick throughout. A standout since birth out of a highly maternal cow.
- Top 15% CW, MARB. Top 20% YW, FPI.
- Double Black.



**LOT 20**

Lot **20 LEM CAP 316 2065**

REG: AMGV1552004 | DOB: 1/11/22 | TAT: 2065 | 3.2GV, 96.9AN

CONNEALY CAPITALIST 028

Sire **LD CAPITALIST 316**

LD DIXIE ERICA 2053

BALDRIDGE COMMAND C036

Dam **MS COMMAND 020 ET**

MS RESOURCE 825 ET

Homozygous Black  
Polled

**ACT BW ADJ WW**  
82 778

**CALVING EASE**  
★★



CED	BW	WW	YW	MILK	CEM	HP	ST	YG	CW	REA	MARB	FPI
13	1.6	95	161	19	6	6	8	0.17	72	0.66	0.36	92.61
45%	90%	1%	1%	65%	60%	40%	>95%	>95%	1%	30%	40%	4%

- This clean made calf has a lot of growth and carcass. Out of a good young cow, keep every daughter.
- Top 1% WW, YW, CW. Top 4% FPI.
- Homozygous Black and Top Dollar Angus Qualified.



Lot **21 LEM DENVER 2060**

REG: AMGV1552015 | DOB: 2/8/22 | TAT: 2060 | 29.7GV, 70.3AN

EXAR DENVER 2002B

Sire **TWIN OAK DENVER 823F ET**

MS C-CROSS EC / 7309T

S A V RESOURCE 1441

Dam **MS RESOURCE 729 ET**

MS MIDLAND 823U

Homozygous Black  
Polled Balancer

**ACT BW ADJ WW**  
89 769

**CALVING EASE**  
★★



CED	BW	WW	YW	MILK	CEM	HP	ST	YG	CW	REA	MARB	FPI
13	0.6	71	110	21	6	6	14	-0.01	41	0.55	0.30	78.03
45%	75%	50%	50%	45%	65%	40%	55%	70%	30%	35%	65%	70%

- A lot of stretch and growth. Out of a good-uddered cow.
- Homozygous Black.



# Black Hybrid Bulls



## Lot 22 LEM DENVER 2064

REG: AMGV1552011 | DOB: 2/19/22 | TAT: 2064 | 21.9GV, 76.6AN, 1.6AR

EXAR DENVER 2002B

Sire TWIN OAK DENVER 823F ET

MS C-CROSS EC / 7309T

S A V RESOURCE 1441

Dam MS RESOURCE 627D ET

MS FINAL ANSWER 121Y

Homozygous Black  
Polled

ACT BW	ADJ WW
86	775
CALVING EASE	
★★	



CED	BW	WW	YW	MILK	CEM	HP	ST	YG	CW	REA	MARB	FPI
14	-1.5	69	115	18	6	8	10	0.16	39	0.23	0.53	84.70
30%	25%	55%	30%	75%	60%	20%	95%	>95%	30%	95%	10%	25%

- Out of a deep-bodied maternal cow with a perfect udder. Balanced bull with moderate birth.
- Top 10% MARB. Top 25% BW, FPI.
- Homozygous Black and Top Dollar Angus Qualified.



## Lot 23 LEM DENVER 2072

REG: AMGV1552013 | DOB: 2/23/22 | TAT: 2072 | 25GV, 73AN, 2AR

EXAR DENVER 2002B

Sire TWIN OAK DENVER 823F ET

MS C-CROSS EC / 7309T

DENSITY 564C ET

Dam MS REPUTATION 704

MS FINAL ANSWER 204 Z

Homozygous Black  
Polled Balancer

ACT BW	ADJ WW
87	719
CALVING EASE	
★★	



CED	BW	WW	YW	MILK	CEM	HP	ST	YG	CW	REA	MARB	FPI
16	0.0	67	106	19	9	6	15	0.02	32	0.39	0.47	80.90
15%	65%	70%	60%	65%	15%	40%	40%	80%	60%	70%	25%	50%

- Length and performance. Good-uddered dam.
- Top 15% CED, CEM. Top 25% MARB.
- Homozygous Black.

## Lot 24 LEM ENTICE 2066

REG: AMGV1552028 | DOB: 1/17/22 | TAT: 2066 | 2.4GV, 96.9AN, 0.8AR

SYDGEN ENHANCE

Sire MOGCK ENTICE

MOGCK ERICA 2255

BALDRIDGE COMMAND C036

Dam MS COMMAND 916 ET

MS RESOURCE 626D ET

Homozygous Black  
Polled

ACT BW	ADJ WW
88	713
CALVING EASE	
★★	



CED	BW	WW	YW	MILK	CEM	HP	ST	YG	CW	REA	MARB	FPI
10	0.6	95	160	19	-2	7	8	0.09	61	0.56	0.65	100.49
85%	70%	1%	1%	65%	>95%	30%	>95%	>95%	1%	50%	4%	1%

- High performance and carcass calf out of a beautiful 626 daughter.
- Top 1% WW, YW, CW, FPI. Top 4% MARB.
- Homozygous Black and Top Dollar Angus Qualified.

**DNA & Ultrasound Data with Decades of A.I. & E.T.!**  
**First Breeding Season Guarantee / Free Care Until April 1 and Free Delivery**







# Black Hybrid Bulls



**LOT 26**

*Lot*  
**25 LEM DENSITY 2058**



REG: AMGV1552016 | DOB: 1/20/22 | TAT: 2058 | 12.5GV, 87.5AN

CONNEALY CAPITALIST 028

*Sire* DENSITY 564C ET

MS NET WORTH 341 A

GDAR GAME DAY 449

*Dam* MS GAME BABE 732 ET

MS 031X

Homozygous Black Polled

ACT BW	ADJ WW
88	758

CALVING EASE  
★★



CED	BW	WW	YW	MILK	CEM	HP	ST	YG	CW	REA	MARB	FPI
14	-1.6	71	115	23	6	2	9	0.14	46	0.32	0.60	87.88
30%	25%	45%	30%	30%	60%	85%	>95%	>95%	10%	90%	10%	15%

- Dam is a powerful donor cow. Good calf since birth.
- Top 10% CW, MARB. Top 15% FPI. Top 25% BW, DOC.
- Homozygous Black and Top Dollar Angus Qualified.

*Lot*  
**26 LEM DENVER 2070**

REG: AMGV1552012 | DOB: 2/15/22 | TAT: 2070 | 35.9GV, 64.1AN

EXAR DENVER 2002B

*Sire* TWIN OAK DENVER 823F ET

MS C-CROSS EC / 7309T

TOP CHOICE 474 B ET

*Dam* MS TOP CHOICE 635D ET

BRILLIANCE 140Y

Homozygous Black Polled Balancer

ACT BW	ADJ WW
86	712

CALVING EASE  
★★



CED	BW	WW	YW	MILK	CEM	HP	ST	YG	CW	REA	MARB	FPI
14	1.2	66	97	20	8	6	11	-0.01	35	0.48	0.61	81.87
35%	85%	70%	80%	55%	30%	40%	90%	70%	50%	50%	10%	45%

- Nice balanced young calf out of a good female.
- Top 10% MARB.
- Homozygous Black.

*Lot*  
**27 LEM FLATTOP 2063**



REG: AMGV1552008 | DOB: 1/25/22 | TAT: 2063 | 2.4GV, 96.9AN, 0.8AR

CONNEALY BLACK GRANITE

*Sire* WERNER FLAT TOP 4136

WERNER LADY 0304

BALDRIDGE COMMAND C036

*Dam* MS COMMAND 027 ET

MS RESOURCE 626D ET

Homozygous Black Polled

ACT BW	ADJ WW
80	795

CALVING EASE  
★★



CED	BW	WW	YW	MILK	CEM	HP	ST	YG	CW	REA	MARB	FPI
15	-0.1	89	145	22	6	11	9	0.13	51	0.51	0.63	98.29
20%	55%	2%	2%	35%	60%	5%	>95%	>95%	5%	60%	4%	1%

- Dam is a good young cow. Attractive EPD profile.
- Top 2% YW, FPI. Top 3% WW. Top 4% MARB. Top 5% TM, HP, CW.
- Homozygous Black and Top Dollar Angus Qualified.

*Lot*  
**28 LEM DENVER 2057**

REG: AMGV1558600 | DOB: 2/17/22 | TAT: 2057 | 29.7GV, 70.3AN

EXAR DENVER 2002B

*Sire* TWIN OAK DENVER 823F ET

MS C-CROSS EC / 7309T

S A V NET WORTH 4200

*Dam* MS NET WORTH 506C ET

MS FRONTIER 932W

Polled

ACT BW	ADJ WW
74	699

CALVING EASE



CED	BW	WW	YW	MILK	CEM	HP	ST	YG	CW	REA	MARB	FPI
12	1.8	72	114	22	8	7	14	0.03	48	0.50	0.57	83.59
60%	95%	45%	40%	35%	30%	30%	55%	85%	15%	50%	10%	35%

- Dam is a good young cow. Attractive EPD profile.
- Top 2% YW, FPI. Top 3% WW. Top 4% MARB. Top 5% TM, HP, CW.
- Homozygous Black and Top Dollar Angus Qualified.

**VOLUME DISCOUNTS**

2 Bulls -- 1% / 3 Bulls -- 2%

4 Bulls -- 3% / 5 Bulls -- 4%





# Angus

## FLUSH BROTHERS LOTS 29-31

Outstanding set of Angus ET brothers with length, muscle, power, and performance. Dam is a perfect-uddered Aviator daughter of the 642 donor cow.

### Lot 29 LEM RESOURCE 2045 ET

REG: AAA 20517588 | DOB: 01/17/22 | TAT: 2045 | 100% ANGUS

Rito 707 of Ideal 3407 7075

Sire S A V Resource 1441

S A V Blackcap May 4136

Musgrave Aviator

Dam Lem MS Aviator 926 Et

MS Capitalist 642 Et

CED	BW	WW	YW	MILK	CEM	SEN	CW	MARB	RE	FAT
4	2.3	67	123	21	7	-23	50	0.10	0.88	0.005
70%	75%	35%	30%	85%	65%	70%	45%	95%	15%	40%
SM	SW	SF	SG	SB	SC					
62	55	95	31	126	225					
55%	55%	30%	90%	70%	70%					

ACT BW	ACT WW
84	785
CALVING EASE	
★★	



LOT 29

### Lot 30 LEM RESOURCE 2044 ET

REG: AAA 20517587 | DOB: 01/15/22 | TAT: 2044 | 100% ANGUS

Rito 707 of Ideal 3407 7075

Sire S A V Resource 1441

S A V Blackcap May 4136

Musgrave Aviator

Dam Lem MS Aviator 926 Et

MS Capitalist 642 Et

CED	BW	WW	YW	MILK	CEM	SEN	CW	MARB	RE	FAT
4	2.3	67	123	21	7	-23	50	0.10	0.88	0.005
70%	75%	35%	30%	85%	65%	70%	45%	95%	15%	40%
SM	SW	SF	SG	SB	SC					
62	55	95	31	126	225					
55%	55%	30%	90%	70%	70%					

ACT BW	ACT WW
82	820
CALVING EASE	
★★	



LOT 30

### Lot 31 LEM RESOURCE 2073 ET

REG: AAA 20534088 | DOB: 01/20/22 | TAT: 2073 | 100% ANGUS

Rito 707 of Ideal 3407 7075

Sire S A V Resource 1441

S A V Blackcap May 4136

Musgrave Aviator

Dam Lem MS Aviator 926 Et

MS Capitalist 642 Et

CED	BW	WW	YW	MILK	CEM	SEN	CW	MARB	RE	FAT
4	2.3	67	123	21	7	-23	50	0.10	0.88	0.005
70%	75%	35%	30%	85%	65%	70%	45%	95%	15%	40%
SM	SW	SF	SG	SB	SC					
62	55	95	31	126	225					
55%	55%	30%	90%	70%	70%					

ACT BW	ACT WW
81	715
CALVING EASE	
★★	



GRANDDAM OF LOTS 29-31 MS CAPITALIST 642 ET

- Another Resource son from the quality maternal line.





# Black Angus Bulls

## FLUSH BROTHERS LOTS 32-34

Attractive Angus sleep-all-night heifer bulls from their long-made, great-uddered Bronc dam. Will sire quality, sound daughters.

### Lot 32 LEM CAP 316 2035 ET

REG: AAA 20517591 | DOB: 01/12/22 | TAT: 2035 | 100% ANGUS

Connealy Capitalist 028

Sire LD Capitalist 316

LD Dixie Erica 2053

Baldrige Bronc

Dam Brookdale Progress 629

Brookdale Progress 371

CED	BW	WW	YW	MILK	CEM	SEN	CW	MARB	RE	FAT
10	0.1	72	126	32	9	-20	57	0.67	0.61	0.055
20%	25%	20%	25%	15%	40%	60%	30%	45%	55%	95%
SM	SW	SF	SG	SB	SC					
77	78	97	50	147	268					
15%	10%	25%	50%	40%	25%					

ACT BW	ACT WW
72	676
CALVING EASE	
★★★★	

### Lot 33 LEM CAP 316 2036 ET

REG: AAA 20517592 | DOB: 01/16/22 | TAT: 2036 | 100% ANGUS

Connealy Capitalist 028

Sire LD Capitalist 316

LD Dixie Erica 2053

Baldrige Bronc

Dam Brookdale Progress 629

Brookdale Progress 371

CED	BW	WW	YW	MILK	CEM	SEN	CW	MARB	RE	FAT
10	0.1	72	126	32	9	-20	57	0.67	0.61	0.055
20%	25%	20%	25%	15%	40%	60%	30%	45%	55%	95%
SM	SW	SF	SG	SB	SC					
77	78	97	50	147	268					
15%	10%	25%	50%	40%	25%					

ACT BW	ACT WW
71	616
CALVING EASE	
★★★★	



### Lot 34 LEM CAP 316 2040 ET

REG: AAA 20517593 | DOB: 01/13/22 | TAT: 2040 | 100% ANGUS

Connealy Capitalist 028

Sire LD Capitalist 316

LD Dixie Erica 2053

Baldrige Bronc

Dam Brookdale Progress 629

Brookdale Progress 371

CED	BW	WW	YW	MILK	CEM	SEN	CW	MARB	RE	FAT
10	0.1	72	126	32	9	-20	57	0.67	0.61	0.055
20%	25%	20%	25%	15%	40%	60%	30%	45%	55%	95%
SM	SW	SF	SG	SB	SC					
77	78	97	50	147	268					
15%	10%	25%	50%	40%	25%					

ACT BW	ACT WW
77	726
CALVING EASE	
★★★★	







## FLUSH BROTHERS LOTS 35-36

A pair of well balanced Angus bulls sired by the popular Hoover No Doubt and from our 642 donor who is a tank of a cow. Bring carcass quality and a performance pedigree in an attractive package.

### Lot 35 LEM NO DOUBT 2042



REG: AAA 20517590 | DOB: 01/16/22 | TAT: 2042 | 100% ANGUS

Mogck Bullseye

Sire Hoover No Doubt

Miss Blackcap Ellston J2

Connealy Capitalist 028

Dam MS Capitalist 642 Et

B/F Forever Lady 46P 7P 104T

CED	BW	WW	YW	MILK	CEM	SEN	CW	MARB	RE	FAT
4	2.6	71	130	22	11	-20	61	0.63	0.82	0.021
70%	80%	25%	20%	80%	20%	60%	20%	50%	25%	65%
SM	SW	SF	SG	SB	SC					
66	60	114	54	168	284					
40%	40%	10%	40%	15%	15%					

ACT BW	ACT WW
86	590
CALVING EASE	
★★	



LOT 35

### Lot 36 LEM NO DOUBT 2041



REG: AAA 20517589 | DOB: 01/14/22 | TAT: 2041 | 100% ANGUS

Mogck Bullseye

Sire Hoover No Doubt

Miss Blackcap Ellston J2

Connealy Capitalist 028

Dam MS Capitalist 642 Et

B/F Forever Lady 46P 7P 104T

CED	BW	WW	YW	MILK	CEM	SEN	CW	MARB	RE	FAT
4	2.6	71	130	22	11	-20	61	0.63	0.82	0.021
70%	80%	25%	20%	80%	20%	60%	20%	50%	25%	65%
SM	SW	SF	SG	SB	SC					
66	60	114	54	168	284					
40%	40%	10%	40%	15%	15%					

ACT BW	ACT WW
82	560
CALVING EASE	
★★	



LOT 36

### Lot 37 LEM ENTICE 2061



REG: AAA 20517585 | DOB: 01/23/22 | TAT: 2061 | 100% ANGUS

SydGen Enhance

Sire MOGCK Entice

MOGCK Erica 2255

Sinclair Just In Time 7RT19

Dam E&b Lady Just in Time 236

E&B Lady Predestined 7100

CED	BW	WW	YW	MILK	CEM	SEN	CW	MARB	RE	FAT
4	1.1	50	92	26	1	-4	26	0.78	0.46	-0.006
70%	50%	85%	80%	50%	95%	20%	95%	35%	75%	25%
SM	SW	SF	SG	SB	SC					
65	47	67	58	125	227					
45%	80%	90%	30%	70%	65%					

ACT BW	ADJ WW
86	676
CALVING EASE	
★★	

• Well-balanced calf from an attractive, maternal dam.

### Lot 38 LEM STUNNER 2067



REG: AAA 20517586 | DOB: 02/02/22 | TAT: 2067 | 100% ANGUS

LD Capitalist 316

Sire Musgrave 316 Stunner

MCATL Blackbird 831-1378

Jindra Acclaim

Dam GVC Johanna H073

GVC Johanna E008

CED	BW	WW	YW	MILK	CEM	SEN	CW	MARB	RE	FAT
8	0.5	73	126	33	5	-35	70	0.69	0.68	0.038
35%	35%	20%	25%	15%	80%	90%	10%	45%	40%	85%
SM	SW	SF	SG	SB	SC					
48	73	116	53	169	267					
90%	15%	5%	40%	15%	25%					

ACT BW	ADJ WW
75	733
CALVING EASE	
★★★	

• Angus heifer bull with a well-balanced EPD profile



# Red Angus



**LOT 39**

## FLUSH BROTHERS LOTS 39-45

Starting off our red bulls is a consistent & deep set of Grindstone sons. They are very thick, easy-fleshing, soft-made, well-balanced, and sound footed & structured while maintaining hip & muscle. They come from the 902 Seneca cow who started her career with a bang with last year's high-selling Wideload sons & has followed up with an equally impressive set this year that one-ups in carcass value. Last year's 5 sons averaged \$13,100 including \$31,000 high seller LEM Worldwide to Gall Family Red Angus. The 902 daughters have all stood above the pack in terms of quality & the Grindstones are one of the most impressive sets of Red Angus flush sisters we've ever produced. 902 possesses elite fertility having been flushed 3 times for an average of over 23 embryos & has bred back first AI service each time.



DAM OF LOTS 39-45 **LEM MS SENECA 902 ET**

### <sup>Lot</sup> 39 **LEM CORNERSTONE 2003 ET**

REG: RAA 4659183 | DOB: 1/14/22 | TAT: 2003 | 100% RED ANGUS

HXC ALLEGIANCE 5502C

*Sire* HXC GRINDSTONE 9908G

HXC 605D

RREDS SENECA 731C

*Dam* LEM MS SENECA 902 ET

LEM REDEMPTION 616 ET

ACT BW	ADJ WW
70	775
CALVING EASE	
★★★	



PRO S	HERD	GRID	CED	BW	WW	YW	MILK	CEM	HP
112	47	65	12	-2.4	64	106	25	6	13
21%	66%	8%	60%	39%	37%	31%	57%	68%	28%
ST	YG	CW	REA	MARB	FAT				
15	0.08	39	0.42	0.67	0.04				
53%	57%	7%	7%	9%	85%				

- Standout bull among a deep, competitive set of reds and ET brothers. Balances performance, thickness, power, moderate birth, maternal strength, and carcass excellence all at a high level. Will sire profitable cattle at all levels with very functional and practical daughters. Checks a lot of boxes.
- Top 7% CW, REA. Top 9% GM, MARB. Top Dollar Angus Qualified.



# Red Angus Bulls

Lot **40 LEM FIRESTONE 2002 ET**



REG: RAA 4659181 | DOB: 1/16/22 | TAT: 2002 | 100% RED ANGUS

HXC ALLEGIANCE 5502C

Sire HXC GRINDSTONE 9908G

HXC 605D

RREDS SENECA 731C

Dam LEM MS SENECA 902 ET

LEM REDEMPTION 616 ET

ACT BW	ADJ WW
78	737
CALVING EASE	
★★	



PRO S	HERD	GRID	CED	BW	WW	YW	MILK	CEM	HP
84	20	65	9	-1.1	73	122	25	4	13
64%	96%	9%	90%	65%	11%	8%	57%	93%	28%
ST	YG	CW	REA	MARB	FAT				
11	0.12	50	0.31	0.49	0.02				
89%	78%	1%	17%	33%	51%				

- Quality bull that has stood out as one of the top ET reds since a young age. High growth and fleshing ease with the elite maternal strength of his dam.
- Top 1% CW. Top 9% GM, YW. Top Dollar Angus Qualified.



MATERNAL BROTHER OF LOTS 39-45 LEM WORLDWIDE 1001 ET

Lot **41 LEM TOMBSTONE 2004 ET**



REG: RAA 4659185 | DOB: 1/15/22 | TAT: 2004 | 100% RED ANGUS

HXC ALLEGIANCE 5502C

Sire HXC GRINDSTONE 9908G

HXC 605D

RREDS SENECA 731C

Dam LEM MS SENECA 902 ET

LEM REDEMPTION 616 ET

ACT BW	ADJ WW
76	684
CALVING EASE	
★★	



PRO S	HERD	GRID	CED	BW	WW	YW	MILK	CEM	HP
143	59	84	10	0.3	71	124	25	5	13
2%	42%	1%	83%	86%	15%	6%	57%	89%	28%
ST	YG	CW	REA	MARB	FAT				
18	0.04	54	0.58	0.57	0.02				
21%	34%	1%	2%	19%	46%				

- Powerful bull with very impressive EPD set. Right there with the best bulls in the offering.
- Top 1% GM, CW. Top 2% REA. Top 3% ADG. Top 4% ProS. Top 7% YW. Top 16% WW. Top 19% MARB. Top Dollar Angus Qualified.



LOT 41

Lot **42 LEM REDSTONE 2005 ET**



REG: RAA 4659187 | DOB: 1/14/22 | TAT: 2005 | 100% RED ANGUS

HXC ALLEGIANCE 5502C

Sire HXC GRINDSTONE 9908G

HXC 605D

RREDS SENECA 731C

Dam LEM MS SENECA 902 ET

LEM REDEMPTION 616 ET

ACT BW	ADJ WW
77	726
CALVING EASE	
★★	



PRO S	HERD	GRID	CED	BW	WW	YW	MILK	CEM	HP
119	63	56	12	-2.8	65	110	25	6	13
13%	33%	17%	67%	32%	33%	23%	57%	77%	28%
ST	YG	CW	REA	MARB	FAT				
18	0.11	38	0.36	0.52	0.04				
15%	76%	8%	12%	27%	93%				

- This flush is truly consistent and deep. It is tough to pick any one of them over the rest. This is another exciting calf that stacks up to his peers.
- Top 8% CW. Top 12% REA. Top 18% GM, ADG. Top 25% YW. Top 27% MARB. Top Dollar Angus Qualified.



LOT 42



# Red Angus Bulls



**LOT 43**

Lot **43** **LEM KEYSTONE 2006 ET**

REG: RAA 4659189 | DOB: 1/17/22 | TAT: 2006 | 100% RED ANGUS

HXC ALLEGIANCE 5502C

Sire **HXC GRINDSTONE 9908G**

HXC 605D

RREDS SENECA 731C

Dam **LEM MS SENECA 902 ET**

LEM REDEMPTION 616 ET

PRO S	HERD	GRID	CED	BW	WW	YW	MILK	CEM	HP
118	52	66	12	-2.2	65	110	25	6	13
14%	56%	7%	67%	43%	33%	23%	57%	72%	28%
ST	YG	CW	REA	MARB	FAT				
16	0.01	40	0.52	0.58	0.02				
41%	24%	5%	3%	18%	58%				

ACT BW	ADJ WW
78	775
CALVING EASE	
★★	



- High-quality, thick, easy fleshing Grindstone bull that has a well balanced EPD set and will make a great herd bull!
- Top 3% REA. Top 5% CW. Top 7% GM. Top 14% ProS. Top 15% ADG. Top 18% MARB. Top 23% YW. Top Dollar Angus Qualified.

Lot **44** **LEM SHARPSTONE 2007 ET**

REG: RAA 4659191 | DOB: 1/16/22 | TAT: 2007 | 100% RED ANGUS

HXC ALLEGIANCE 5502C

Sire **HXC GRINDSTONE 9908G**

HXC 605D

RREDS SENECA 731C

Dam **LEM MS SENECA 902 ET**

LEM REDEMPTION 616 ET

PRO S	HERD	GRID	CED	BW	WW	YW	MILK	CEM	HP
100	37	64	9	0.0	72	121	25	4	13
37%	82%	9%	90%	83%	13%	8%	57%	93%	28%
ST	YG	CW	REA	MARB	FAT				
14	0.12	48	0.33	0.49	0.03				
66%	81%	1%	14%	33%	71%				

ACT BW	ADJ WW
65	647
CALVING EASE	
★★	



- Another brother that comes from the elite 902 donor dam.
- Top 1% CW. Top 6% ADG. Top 8% YW. Top 9% GM. Top 13% WW. Top 14% REA. Top Dollar Angus Qualified.

Lot **45** **LEM COBBLESTONE 2008 ET**

REG: RAA 4659193 | DOB: 1/14/22 | TAT: 2008 | 100% RED ANGUS

HXC ALLEGIANCE 5502C

Sire **HXC GRINDSTONE 9908G**

HXC 605D

RREDS SENECA 731C

Dam **LEM MS SENECA 902 ET**

LEM REDEMPTION 616 ET

PRO S	HERD	GRID	CED	BW	WW	YW	MILK	CEM	HP
134	56	79	7	-0.9	68	123	25	3	13
5%	48%	2%	98%	68%	23%	7%	57%	98%	28%
ST	YG	CW	REA	MARB	FAT				
18	0.12	51	0.38	0.53	0.03				
13%	78%	1%	10%	25%	69%				

ACT BW	ADJ WW
80	692
CALVING EASE	
★★	



- The last but not least 902 X Grindstone calf. Great set of steady brothers that will pass that consistency to their calves.
- Top 1% CW. Top 2% GM, ADG. Top 5% ProS. Top 7% YW. Top 10% REA. Top 23% WW. Top 25% MARB. Top Dollar Angus Qualified.



MATERNAL BROTHER OF LOTS 39-45

**LEM OVERLOAD 1003 ET** Sold in 2022 to Missouri River Red Angus



**LOT 45**





**LOT 46**

## FLUSH BROTHERS LOTS 46-50

These Stockmarket bulls have really impressed us. They sport jaw-dropping EPDs & are sleep-all-night heifer bulls while maintaining power & performance. They are deep from flank to rib & have big hips. Their dam is a beautiful, good uddered, quiet tempered, high performing One of a Kind female that is hard not to love. Her young daughters are proving to be great mothers and phenotypic standouts. Expect these bulls to sire high performing, high grading feeders and fantastic replacement females like their mother and sisters.

*Lot*  
**46 LEM STOCKYARD 200I ET**



REG: RAA 4659179 | DOB: 1/15/22 | TAT: 2001 | 100% RED ANGUS

PIE STOCKMAN 4051

*Sire* BIEBER CL STOCKMARKET E119

BIEBER CL ADELLE 475C

PIE ONE OF A KIND 352

*Dam* LEM ONEKIND 934 ET

LEM MS DIRECTION 712 ET

ACT BW	ADJ WW
74	694
CALVING EASE	
★★★★	



PRO S	HERD	GRID	CED	BW	WW	YW	MILK	CEM	HP
138	53	86	17	-3.9	71	120	23	11	12
3%	54%	1%	5%	16%	15%	9%	75%	4%	47%
ST	YG	CW	REA	MARB	FAT				
15	0.11	46	0.40	0.85	0.03				
60%	75%	2%	8%	2%	81%				



DAM OF LOTS 46-50 **LEM ONEKIND 934 ET**

- The leader of this impressive set of flush brothers. Everything you could want out of a spread bull. It's rare to find thick and attractive Red Angus heifer bulls that still maintain length and performance, but Stockyard answers the call. Lots of potential and substance here.
- Top 1% GM. Top 2% MARB, CW. Top 3% ProS. Top 4% CEM. Top 5% CED. Top 6% ADG. Top 8% REA. Top 9% YW. Top 15% WW. Top 16% BW. Top Dollar Angus Qualified.





# Red Angus Bulls



**LOT 48**

**LOT 50**

*Lot* **47 LEM STOCKMARKET 2020 ET**

*Lot* **48 LEM ASSET 2022 ET**

REG: RAA 4659207 | DOB: 1/14/22 | TAT: 2020 | 100% RED ANGUS

REG: RAA 4659211 | DOB: 1/16/22 | TAT: 2022 | 100% RED ANGUS

PIE STOCKMAN 4051

*Sire* BIEBER CL STOCKMARKET E119

*Sire* BIEBER CL STOCKMARKET E119

BIEBER CL ADELLE 475C

BIEBER CL ADELLE 475C

PIE ONE OF A KIND 352

PIE ONE OF A KIND 352

*Dam* LEM ONEKIND 934 ET

*Dam* LEM ONEKIND 934 ET

LEM MS DIRECTION 712 ET

LEM MS DIRECTION 712 ET

ACT BW	ADJ WW
75	677
CALVING EASE	
★★★★	

ACT BW	ADJ WW
70	637
CALVING EASE	
★★★★	



PRO S	HERD	GRID	CED	BW	WW	YW	MILK	CEM	HP
164	78	86	15	-2.6	81	137	23	9	12
1%	12%	1%	25%	35%	2%	1%	75%	11%	47%
ST	YG	CW	REA	MARB	FAT				
18	0.16	38	0.13	1.05	0.03				
13%	93%	7%	49%	1%	82%				

PRO S	HERD	GRID	CED	BW	WW	YW	MILK	CEM	HP
144	64	80	15	-3.8	76	132	23	9	12
2%	31%	2%	18%	17%	7%	3%	75%	13%	47%
ST	YG	CW	REA	MARB	FAT				
17	0.15	34	0.15	0.90	0.04				
31%	89%	14%	46%	1%	85%				

- Outlier growth and marbling EPDs in this heifer bull.
- Top 1% ProS, GM, YW, ADG, MARB. Top 2% WW. Top 7% CW. Top 11% CEM. Top 12% HB. Top 25% CED. Top Dollar Angus Qualified.

- Very impressive bull that shows lots of stretch and growth. Stands out among the top in the offering in the bull pen.
- Top 1% ADG, MARB. Top 2% ProS, GM. Top 3% YW. Top 7% WW. Top 14% CW. Top 17% BW, Top 18% CED. Top Dollar Angus Qualified.

*Lot* **49 LEM STOCKMARKET 2021 ET**

*Lot* **50 LEM STOCKMARKET 2019 ET**

REG: RAA 4659209 | DOB: 1/15/22 | TAT: 2021 | 100% RED ANGUS

REG: RAA 4659205 | DOB: 1/13/22 | TAT: 2019 | 100% RED ANGUS

PIE STOCKMAN 4051

*Sire* BIEBER CL STOCKMARKET E119

*Sire* BIEBER CL STOCKMARKET E119

BIEBER CL ADELLE 475C

BIEBER CL ADELLE 475C

PIE ONE OF A KIND 352

PIE ONE OF A KIND 352

*Dam* LEM ONEKIND 934 ET

*Dam* LEM ONEKIND 934 ET

LEM MS DIRECTION 712 ET

LEM MS DIRECTION 712 ET

ACT BW	ADJ WW
74	708
CALVING EASE	
★★★★	

ACT BW	ADJ WW
78	703
CALVING EASE	
★★★	



PRO S	HERD	GRID	CED	BW	WW	YW	MILK	CEM	HP
157	64	93	17	-1.7	84	146	23	10	12
1%	32%	1%	6%	53%	1%	1%	75%	4%	47%
ST	YG	CW	REA	MARB	FAT				
16	0.06	48	0.47	0.82	0.02				
45%	47%	1%	5%	3%	55%				

PRO S	HERD	GRID	CED	BW	WW	YW	MILK	CEM	HP
141	39	102	11	-2.5	88	154	23	7	12
3%	80%	1%	73%	37%	1%	1%	75%	52%	47%
ST	YG	CW	REA	MARB	FAT				
13	0.16	52	0.25	0.94	0.03				
79%	93%	1%	26%	1%	69%				

- Highest ADJ WW among his brothers. Knockout number profile.
- Top 1% ProS, GM, WW, YW, ADG, CW. Top 3% MARB. Top 4% CEM. Top 5% REA. Top 6% CED. Top Dollar Angus Qualified.

- Long made, high performance bull with great numbers.
- Top 1% GM, WW, YW, ADG, MARB, CW. Top 3% ProS. Top 26% REA. Top Dollar Angus Qualified.



## FLUSH BROTHERS LOTS 51-56

Wideload has continued to sire stout, heavy muscled, big hipped bulls in our program & these are no exception. It is tough to find Red Angus bulls that carry this much thickness & power. Their One of a Kind dam packs a lot of growth & has a quality udder.



**LOT 52**

### Lot 51 LEM PAYLOAD 2017 ET

REG: RAA 4653531 | DOB: 1/18/22 | TAT: 2017 | 100% RED ANGUS

SLGN WIDELOAD 920W

Sire PELTON WIDELOAD 78B

PELTON MISS JAYLA 0508S

PIE ONE OF A KIND 352

Dam LEM ONEKIND 933 ET

LEM MS DIRECTION 712 ET

PRO S	HERD	GRID	CED	BW	WW	YW	MILK	CEM	HP
78	35	43	11	-0.6	68	120	25	6	13
73%	84%	38%	68%	74%	22%	9%	57%	68%	28%
ST	YG	CW	REA	MARB	FAT				
13	0.12	36	0.23	0.30	0.03				
77%	79%	11%	29%	79%	79%				

- Thick, long, powerful bull with a big hip and dark, cherry red color.
- Top 3% ADG. Top 9% YW. Top 11% CW. Top 22% WW.



**LOT 51**

### Lot 52 LEM INVASION 2016 ET

REG: RAA 4653529 | DOB: 1/14/22 | TAT: 2016 | 100% RED ANGUS

SLGN WIDELOAD 920W

Sire PELTON WIDELOAD 78B

PELTON MISS JAYLA 0508S

PIE ONE OF A KIND 352

Dam LEM ONEKIND 933 ET

LEM MS DIRECTION 712 ET

PRO S	HERD	GRID	CED	BW	WW	YW	MILK	CEM	HP
93	37	56	11	-2.3	70	118	25	6	13
49%	82%	17%	73%	41%	18%	11%	57%	74%	28%
ST	YG	CW	REA	MARB	FAT				
13	0.05	37	0.34	0.47	0.02				
73%	40%	9%	13%	36%	46%				

- Elite bull that stands above the rest in terms of thickness, hip, and muscle expression. Wide based with great feet and legs. One of the best of the offering.
- Top 7% ADG. Top 9% CW. Top 11% YW. Top 13% REA. Top 17% GM. Top 18% WW. Top Dollar Angus Qualified



Check out this Wideload x 933 ET heifer pictured this summer!



# Red Angus Bulls

## Lot 53 LEM TRUCKLOAD 2014 ET

REG: RAA 4653525 | DOB: 1/20/22 | TAT: 2014 | 100% RED ANGUS

SLGN WIDELOAD 920W

Sire PELTON WIDELOAD 78B

PELTON MISS JAYLA 0508S

PIE ONE OF A KIND 352

Dam LEM ONEKIND 933 ET

LEM MS DIRECTION 712 ET

PRO S	HERD	GRID	CED	BW	WW	YW	MILK	CEM	HP
92	28	65	8	0.0	74	125	25	4	13
50%	92%	9%	95%	83%	9%	5%	57%	96%	28%
ST	YG	CW	REA	MARB	FAT				
13	0.03	51	0.38	0.40	-0.01				
78%	33%	1%	10%	53%	7%				

- Thick and muscular like his brothers.
- Top 1% CW. Top 4% ADG. Top 5% YW. Top 9% GM, WW. Top 10% REA. Top Dollar Angus Qualified.



REFERENCE SIRE PELTON WIDELOAD 78B

**ACT BW** 70 | **ADJ WW** 709

**CALVING EASE** ★★

GENESEEEK

## Lot 54 LEM WIDELOAD 2015 ET

REG: RAA 4653527 | DOB: 1/18/22 | TAT: 2015 | 100% RED ANGUS

SLGN WIDELOAD 920W

Sire PELTON WIDELOAD 78B

PELTON MISS JAYLA 0508S

PIE ONE OF A KIND 352

Dam LEM ONEKIND 933 ET

LEM MS DIRECTION 712 ET

PRO S	HERD	GRID	CED	BW	WW	YW	MILK	CEM	HP
69	36	33	11	-2.0	59	105	25	6	13
85%	83%	60%	72%	47%	57%	33%	57%	74%	28%
ST	YG	CW	REA	MARB	FAT				
14	0.01	23	0.22	0.28	0.01				
68%	24%	49%	30%	82%	31%				

- Top 12% ADG. Top 30% REA

**ACT BW** 80 | **ADJ WW** 688

**CALVING EASE** ★★

GENESEEEK

## Lot 55 LEM WIDELOAD 2018 ET

REG: RAA 4653521 | DOB: 1/21/22 | TAT: 2018 | 100% RED ANGUS

SLGN WIDELOAD 920W

Sire PELTON WIDELOAD 78B

PELTON MISS JAYLA 0508S

PIE ONE OF A KIND 352

Dam LEM ONEKIND 933 ET

LEM MS DIRECTION 712 ET

PRO S	HERD	GRID	CED	BW	WW	YW	MILK	CEM	HP
85	31	53	11	-1.0	72	123	25	6	13
63%	89%	21%	71%	67%	12%	7%	57%	76%	28%
ST	YG	CW	REA	MARB	FAT				
12	0.05	40	0.34	0.40	0.01				
82%	44%	6%	13%	53%	41%				

- Top 5% ADG. Top 6% CW. Top 7% YW. Top 12% WW. Top 13% REA. Top Dollar Angus Qualified

**ACT BW** 75 | **ADJ WW** 610

**CALVING EASE** ★★

GENESEEEK



### WHY LEMKE BULLS?

Many of the bulls offered are in the Top 1% of the Breed! Compare the numbers, the phenotype, the customer service and marketing assistance; and it is plain to see why our customer base keeps growing. Put us to work for you - building value in your herd!

**< Two Years of Age for Fall 2022**

### Red Angus Non-Parent Averages

PRO S	94
GM	39
WW	60
YW	96
ADG	0.22
HPG	11
MARB	0.43
CW	23
REA	0.14

### Lemke Red Angus Sale Bull Averages

112	TOP 21%
66	TOP 8%
70	TOP 18%
121	TOP 9%
0.32	TOP 4%
12.5	TOP 23%
0.57	TOP 18%
41	TOP 4%
0.29	TOP 18%





## FLUSH BROTHERS LOTS 56-60

These bulls come from the 932 Cowboy Kind donor who is a model Red Angus cow that balances everything at a high level. 932 and her dam, 612, are the epitome of the easy fleshing, hard working cows that we strive to produce. This is a set of rugged, long, and great-structured flush brothers.

**Lot 56 LEM GRINDSTONE 2009 ET**

REG: RAA 4659195 | DOB: 1/12/22 | TAT: 2009 | 100% RED ANGUS

HXC ALLEGIANCE 5502C  
 Sire HXC GRINDSTONE 9908G  
 HXC 605D  
 PIE THE COWBOY KIND 343

Dam LEM COWKIND 932 ET  
 LEM REDEMPTION 612 ET

ACT BW	ADJ WW
78	637
CALVING EASE	
★★	



PRO S	HERD	GRID	CED	BW	WW	YW	MILK	CEM	HP
108	31	78	9	-0.9	60	108	24	5	12
25%	89%	2%	90%	68%	51%	26%	65%	88%	37%
ST	YG	CW	REA	MARB	FAT				
13	0.04	46	0.35	0.57	0.00				
77%	36%	2%	12%	19%	16%				

- Will sire top feeders and productive females like his dam.
- Top 2% GM, CW. Top 8% ADG. Top 12% REA. Top 19% MARB. Top Dollar Angus Qualified.

**Lot 58 LEM GRINDSTONE 2011 ET**

REG: RAA 4659199 | DOB: 1/19/22 | TAT: 2011 | 100% RED ANGUS

HXC ALLEGIANCE 5502C  
 Sire HXC GRINDSTONE 9908G  
 HXC 605D  
 PIE THE COWBOY KIND 343

Dam LEM COWKIND 932 ET  
 LEM REDEMPTION 612 ET

ACT BW	ADJ WW
80	756
CALVING EASE	
★★	



PRO S	HERD	GRID	CED	BW	WW	YW	MILK	CEM	HP
111	27	84	7	2.2	68	119	24	3	12
23%	92%	1%	98%	98%	22%	10%	65%	97%	37%
ST	YG	CW	REA	MARB	FAT				
13	0.14	51	0.19	0.68	0.01				
76%	87%	1%	37%	9%	37%				

- High growth bull with power and balanced EPD package.
- Top 1% GM, CW. Top 4% ADG. Top 9% MARB. Top 10% YW. Top 22% WW. Top 23% ProS. Top Dollar Angus Qualified.

**Lot 57 LEM GRINDSTONE 2010 ET**

REG: RAA 4659197 | DOB: 1/16/22 | TAT: 2010 | 100% RED ANGUS

HXC ALLEGIANCE 5502C  
 Sire HXC GRINDSTONE 9908G  
 HXC 605D  
 PIE THE COWBOY KIND 343

Dam LEM COWKIND 932 ET  
 LEM REDEMPTION 612 ET

ACT BW	ADJ WW
78	697
CALVING EASE	
★★	



PRO S	HERD	GRID	CED	BW	WW	YW	MILK	CEM	HP
102	33	70	8	3.2	73	129	24	4	12
34%	87%	6%	94%	99%	10%	4%	65%	94%	37%
ST	YG	CW	REA	MARB	FAT				
13	0.12	47	0.34	0.48	0.03				
76%	77%	2%	13%	34%	71%				

- Deep from rib to flank. Long and thick.
- Top 1% ADG. Top 2% CW. Top 4% YW. Top 6% GM. Top 10% WW. Top 13% REA. Top Dollar Angus Qualified.

**Lot 59 LEM GRINDSTONE 2012 ET**

REG: RAA 4659201 | DOB: 1/15/22 | TAT: 2012 | 100% RED ANGUS

HXC ALLEGIANCE 5502C  
 Sire HXC GRINDSTONE 9908G  
 HXC 605D  
 PIE THE COWBOY KIND 343

Dam LEM COWKIND 932 ET  
 LEM REDEMPTION 612 ET

ACT BW	ADJ WW
82	675
CALVING EASE	
★★	



PRO S	HERD	GRID	CED	BW	WW	YW	MILK	CEM	HP
112	23	88	8	4.4	79	143	24	4	12
21%	95%	1%	94%	99%	3%	1%	65%	94%	37%
ST	YG	CW	REA	MARB	FAT				
11	0.10	64	0.40	0.45	0.00				
89%	72%	1%	8%	41%	22%				

- Another brother from the superior maternal pedigree.
- Top 1% GM, YW, ADG, CW. Top 3% WW. Top 8% REA. Top 21% ProS. Top Dollar Angus Qualified.



# Red Angus Bulls



**LOT 60**

*Lot*  
**60 LEM GRINDSTONE 2013 ET**

REG: RAA 4659203 | DOB: 1/14/22 | TAT: 2013 | 100% RED ANGUS

HXC ALLEGIANCE 5502C

*Sire* HXC GRINDSTONE 9908G

HXC 605D

PIE THE COWBOY KIND 343

*Dam* LEM COWKIND 932 ET

LEM REDEMPTION 612 ET

ACT BW	ADJ WW
81	765
CALVING EASE	
★★★	



PRO S	HERD	GRID	CED	BW	WW	YW	MILK	CEM	HP
133	33	100	9	2.1	70	127	24	5	12
5%	86%	1%	90%	97%	16%	5%	65%	91%	37%
ST	YG	CW	REA	MARB	FAT				
13	0.10	55	0.37	0.77	0.01				
76%	68%	1%	11%	4%	35%				

- Highest weaning weight of his flush. Deep bull like the rest of his brothers with great carcass traits.
- Top 1% GM, ADG, CW. Top 4% MARB. Top 5% ProS, YW. Top 11% REA. Top 16% WW. Top Dollar Angus Qualified.



**LOT 61**

*Lot*  
**61 LEM RED BOX 2025 ET**

REG: RAA 4653523 | DOB: 1/2/22 | TAT: 2025 | 100% RED ANGUS

SLGN WIDELOAD 920W

*Sire* MANN RED BOX 55C

PELTON MISS AJA 0839U

BROWN JYJ REDEMPTION Y1334

*Dam* LEM REDEMPTION 611 ET

SIX MILE SIERA 655A

ACT BW	ADJ WW
80	474
CALVING EASE	
★★★	



PRO S	HERD	GRID	CED	BW	WW	YW	MILK	CEM	HP
75	50	25	15	-2.5	61	104	24	8	12
79%	59%	77%	24%	37%	50%	35%	67%	31%	31%
ST	YG	CW	REA	MARB	FAT				
16	0.06	16	0.12	0.38	0.03				
43%	48%	78%	52%	58%	72%				

- Phenotypic, moderate, and thick calf out of the popular Mann Red Box bull. He is a maternal sibling to the dam of lots 74-77, "Pixie", who was the Champion Red Angus heifer at the 2019 Kansas State Fair.
- Top 21% ADG. Top 24% CED.



DAM OF LOT 62 SIX MILE SIERA 655A

*Lot*  
**62 LEM STOCKMARK 2023 ET**

REG: RAA 4659213 | DOB: 1/12/22 | TAT: 2023 | 100% RED ANGUS

PIE STOCKMAN 4051

*Sire* BIBER CL STOCKMARK E119

BIBER CL ADELLE 475C

RED BENCHMARK BETTER BEEF

*Dam* SIX MILE SIERA 655A

RED MCRAES SIERA 32X

ACT BW	ADJ WW
71	592
CALVING EASE	
★★★	



PRO S	HERD	GRID	CED	BW	WW	YW	MILK	CEM	HP
140	68	71	13	-1.6	68	116	20	7	10
3%	24%	5%	52%	55%	22%	14%	92%	41%	73%
ST	YG	CW	REA	MARB	FAT				
19	0.14	35	0.29	0.76	0.05				
11%	88%	12%	19%	5%	97%				

- Out of the foundation cow for our Red Angus program, Six Mile Sierra 655A. Great EPD profile, calving ease, and elite maternal backing.
- Top 3% ProS. Top 5% GM, MARB. Top 9% ADG. Top 12% CW. Top 14% YW. Top 19% REA. Top 22% WW. Top 24% HB.





**LOT 63**

*Lot* **63 LEM WIDELOAD 2056**

REG: RAA 4658425 | DOB: 1/20/22 | TAT: 2056 | 100% RED ANGUS

SLGN WIDELOAD 920W

*Sire* PELTON WIDELOAD 78B

PELTON MISS JAYLA 0508S

RREDS SENECA 731C

*Dam* LEM MS SENECA 902 ET

LEM REDEMPTION 616 ET

PRO S	HERD	GRID	CED	BW	WW	YW	MILK	CEM	HP
95	57	38	12	-3.6	69	121	26	5	11
46%	45%	50%	67%	19%	19%	9%	50%	84%	56%
ST	YG	CW	REA	MARB	FAT				
17	0.13	20	0.12	0.44	0.05				
27%	82%	65%	52%	43%	95%				

ACT BW	ADJ WW
72	780
CALVING EASE	
★★★	



DAM OF LOT 63 LEM MS SENECA 902 ET

- A bull that has been fun from the beginning & is a full sibling to our all-time high seller, LEM Worldwide 1001 ET. As a calf he always hung around the herd bull and walked with a strut like he knew he was cool. He possesses many of the traits that made Worldwide so special such as his outlier hip and muscle shape with the elite maternal backing and fertility of his dam.
- Top 4% ADG. Top 9% YW. Top 19% BW, WW.

*Lot* **64 LEM GRINDSTONE 2057**

REG: RAA 4658427 | DOB: 1/21/22 | TAT: 2057 | 100% RED ANGUS

HXC ALLEGIANCE 5502C

*Sire* HXC GRINDSTONE 9908G

HXC 605D

RREDS SENECA 731C

*Dam* LEM MS SENECA 903 ET

LEM REDEMPTION 616 ET

PRO S	HERD	GRID	CED	BW	WW	YW	MILK	CEM	HP
103	37	66	7	1.9	85	139	23	4	13
33%	82%	8%	97%	97%	1%	1%	73%	96%	28%
ST	YG	CW	REA	MARB	FAT				
13	0.15	46	0.26	0.60	0.03				
76%	89%	2%	24%	16%	78%				

ACT BW	ADJ WW
89	747
CALVING EASE	
★★	



- Dam is a flush sister to 902, making lot 64 a full brother in blood to Lots 39-45. Thick made with great balance of performance, carcass, and maternal traits.
- Top 1% WW, YW. Top 2% ADG, CW. Top 8% GM. Top 16% MARB. Top 24% REA. Top Dollar Angus Qualified.

*Lot* **65 LEM SENECA 2059**

REG: RAA 4658419 | DOB: 1/21/22 | TAT: 2059 | 100% RED ANGUS

BIEBER ROLLIN DEEP Y118

*Sire* RREDS SENECA 731C

RREDS ASTER 309A

ANDRAS NEW DIRECTION R240

*Dam* LEM MS DIRECT 838 ET

SIX MILE SIERA 655A

PRO S	HERD	GRID	CED	BW	WW	YW	MILK	CEM	HP
103	62	41	10	-1.3	72	119	18	5	13
33%	35%	44%	83%	60%	12%	11%	97%	83%	18%
ST	YG	CW	REA	MARB	FAT				
17	0.09	42	0.41	0.29	0.04				
32%	66%	4%	8%	80%	84%				

ACT BW	ADJ WW
81	723
CALVING EASE	
★★	



- Performance, carcass, & style in this Seneca son from the beautiful, deep and wide made 838 cow with a near perfect udder.
- Top 4% CW. Top 8% REA. Top 11% YW. Top 12% WW, ADG.



# Red Angus Bulls



**LOT 66**

*Lot*  
**66 LEM LEGEND 2058**



REG: RAA 4658421 | DOB: 2/8/22 | TAT: 2058 | 100% RED ANGUS

BROWN BLW LEGEND A1965

*Sire* ALC MR LEGEND F49

ALC MISS KING B417

ANDRAS NEW DIRECTION R240

*Dam* LEM MS DIRECT 830 ET

SIX MILE SIERA 655A

PRO S	HERD	GRID	CED	BW	WW	YW	MILK	CEM	HP
122	61	61	16	-3.6	63	110	23	8	15
11%	38%	11%	13%	19%	42%	22%	73%	29%	7%
ST	YG	CW	REA	MARB	FAT				
15	0.18	32	-0.02	0.58	0.03				
60%	96%	18%	82%	18%	78%				

ACT BW	ADJ WW
72	714
CALVING EASE	
★★★★	



- Heifer bull with good performance. Beautiful young dam is a model cow that's easy keeping and perfect uddered. Keep every heifer.
- Top 9% ADG. Top 11% ProS, GM. Top 13% CED. Top 18% MARB, CW. Top 19% BW. Top 22% YW. Top Dollar Angus Qualified.

*Lot*  
**67 LEM WIDELOAD 2062**



REG: RAA 4659219 | DOB: 1/10/22 | TAT: 2062 | 100% RED ANGUS

SLGN WIDELOAD 920W

*Sire* PELTON WIDELOAD 78B

PELTON MISS JAYLA 0508S

HXC ALLEGIANCE 5502C

*Dam* LEM ALLEGIANCE 015 ET

LEM MS DIRECT 840 ET

PRO S	HERD	GRID	CED	BW	WW	YW	MILK	CEM	HP
95	27	68	11	0.2	66	112	24	4	13
46%	92%	7%	79%	85%	30%	20%	62%	94%	27%
ST	YG	CW	REA	MARB	FAT				
12	0.04	35	0.31	0.64	0.01				
83%	33%	12%	17%	12%	33%				

ACT BW	ADJ WW
77	754
CALVING EASE	
★★	



- Widelead son from a 1st calf heifer that's thick with top performance and carcass.
- Top 7% GM. Top 12% ADG, MARB, CW. Top 17% REA. Top 20% YW. Top Dollar Angus Qualified.

*Lot*  
**68 LEM DOMAIN 2061**



REG: RAA 4659217 | DOB: 1/12/22 | TAT: 2061 | 100% RED ANGUS

BECKTON DOMINOR T122 Z1

*Sire* 3SCC DOMAIN A163

3SCC EUCLA X723

ALC MR LEGEND F49

*Dam* LEM MS LEGEND 041

LEM MS CINCH 703 ET

PRO S	HERD	GRID	CED	BW	WW	YW	MILK	CEM	HP
94	38	55	11	-0.5	66	112	26	3	11
48%	80%	18%	76%	75%	31%	19%	48%	98%	49%
ST	YG	CW	REA	MARB	FAT				
15	0.06	37	0.19	0.37	0.00				
55%	45%	8%	37%	61%	14%				

ACT BW	ADJ WW
74	762
CALVING EASE	
★★	



- Domain son from a sharp 1st calf heifer with a great udder. Domain balances all traits with no holes.
- Top 8% CW. Top 11% ADG. Top 18% GM. Top 19% YW. Top Dollar Angus Qualified.

*Lot*  
**69 LEM LEGEND 2060**

REG: RAA 4658413 | DOB: 2/15/22 | TAT: 2060 | 100% RED ANGUS

BROWN BLW LEGEND A1965

*Sire* ALC MR LEGEND F49

ALC MISS KING B417

BROWN JY REDEMPTION Y1334

*Dam* LEM REDEMPTION 616 ET

SIX MILE SIERA 655A

PRO S	HERD	GRID	CED	BW	WW	YW	MILK	CEM	HP
109	71	38	13	-2.4	59	100	24	7	14
24%	19%	50%	43%	39%	56%	44%	66%	52%	13%
ST	YG	CW	REA	MARB	FAT				
17	0.12	21	-0.02	0.44	0.02				
24%	78%	59%	82%	43%	64%				

ACT BW	ADJ WW
78	740
CALVING EASE	
★★	



- Maternal sibling to the elite 902 donor dam.
- Top 19% HB. Top 24% ProS.



# Heifers

## 7 REGISTERED RED ANGUS HEIFERS

Selling these 2022 born heifers from the top of our replacements. All are potential future donors or show heifers!

Lots 70-72 are offered by Lemke Cattle and Lots 73-76 are offered by the Russell Family.

## 8 COMMERCIAL RED ANGUS BRED HEIFERS

We are again offering Red Angus commercial open heifers. All home-raised and from the heart of our commercial herd. All heifers have been on a complete vaccination program, including bangs, poured, and pelvic examined. Sell in groups of 4 with the winning bidder having the option to roll the next 4.

### SELLING AFTER THE REGISTERED HEIFERS

Lot 77: 4 Red Angus Open Heifers

Lot 78: 4 Red Angus Open Heifers

### Lot 70 LEM MISS SENECA 245

REG: RAA 4658411 | DOB: 3/15/22 | TAT: 245 | 100% RED ANGUS

BIEBER ROLLIN DEEP Y118

Sire RREDS SENECA 731C

RREDS ASTER 309A

BROWN JYJ REDEMPTION Y1334

Dam LEM REDEMPTION 612 ET

SIX MILE SIERA 655A

PRO S	HERD	GRID	CED	BW	WW	YW	MILK	CEM	HP
106	68	38	11	-1.3	77	128	21	6	12
29%	24%	51%	71%	60%	6%	4%	89%	67%	33%
ST	YG	CW	REA	MARB	FAT				
17	0.14	38	0.25	0.29	0.04				
27%	87%	7%	26%	80%	90%				

ACT BW 82 ADJ WW 881



LOT 70

- Rare opportunity here. Miss Seneca 245 brings new meaning to the term "Brood Cow Prospect". Describing her as deep & wide is an understatement and our Seneca daughters are some of our very best. From a super easy keeping, perfect uddered, maternal powerhouse cow family.
- Maternal sister to the 932 donor (dam of lots 56-60) and full sister in blood to the 902 donor, their dams being full sisters. *Sells in her entirety!*
- Top 4% YW, ADG. Top 6% WW. Top 7% CW. Top 24% HB. Top 26% REA.

### Lot 71 LEM GRINDSTONE 249

REG: RAA 4658423 | DOB: 1/5/22 | TAT: 249 | 100% RED ANGUS

HXC ALLEGIANCE 5502C

Sire HXC GRINDSTONE 9908G

HXC 605D

RREDS SENECA 731C

Dam LEM MS SENECA 900 ET

LEM REDEMPTION 616 ET

PRO S	HERD	GRID	CED	BW	WW	YW	MILK	CEM	HP
100	46	54	9	0.0	67	115	22	4	13
37%	68%	19%	92%	83%	25%	15%	83%	92%	28%
ST	YG	CW	REA	MARB	FAT				
15	0.12	40	0.32	0.46	0.04				
51%	78%	5%	15%	39%	86%				

ACT BW 85 ADJ WW 649



LOT 71

- Classy, sharp made with extra performance in this fancy cherry red heifer, sired by HXC Grindstone & from a Seneca dam that is a flush sister to 902. Carries top carcass & performance traits.
- Top 5% CW. Top 9% ADG. Top 15% YW, REA. Top 19% GM. Top 25% WW.



# Red Angus Heifers



**LOT 72**

## Lot 72 LEM MISS LEGEND 246

REG: RAA 4698011 | DOB: 3/2/22 | TAT: 246 | 100% RED ANGUS

BROWN BLW LEGEND A1965

ACT BW ADJ WW  
80

Sire ALC MR LEGEND F49

ALC MISS KING B417



BROWN JYJ REDEMPTION Y1334

Dam LEM REDEMPTION 615 ET

SIX MILE SIERA 655A

PRO S	HERD	GRID	CED	BW	WW	YW	MILK	CEM	HP
106	67	39	13	-2.1	60	102	25	6	14
28%	26%	47%	48%	44%	54%	40%	59%	72%	13%
ST	YG	CW	REA	MARB	FAT				
17	0.11	20	-0.01	0.48	0.03				
22%	77%	62%	81%	34%	67%				

- Our herd sire ALC Legend has been tremendous at siring the ideal Red Angus female that has attracted so many to the breed; sensibly sized, easy fleshing maternal experts. From the 615 cow that wrote the book on easy keeping, perfect uddered, attractive phenotyped brood cows.
- Top 13% HPG. Top 26% HB. Top 28% ProS.

LEM Ms. Fusion 879 - "Pixie", was purchased in the 2019 Lemke Cattle Production Sale. She went on to be the Champion Red Angus heifer in the fall of 2019 at the Kansas State Fair. Her first calf, a Cinch heifer, was the 2021 Reserve Champion Red Angus heifer at the Kansas State Fair and the Kansas Junior Livestock Show. As excited as we were about her first heifer, we feel that these embryo heifer calves have an even brighter future, not only in the show ring, but also as production cows.

"Pixie" currently has nine EPDs in the top 25% of the Red Angus breed, including top 5% ProS and top 3% Gridmaster. She is a rare combination of elite phenotype and genotype, tracing back to Lemke's outstanding donor, Six Mile Sierra, her granddam, and sired by Andras Fusion. We are really excited about Pixie, and the quality and consistency of her calves is undeniable. Their combination of structural integrity and attractiveness are unique to the breed. We look forward to sharing her genetics with you.

Russell Red Angus reserves the right to two successful flushes of a minimum of 6 eggs each at the sellers expense and the buyers convenience.



DAM OF LOTS 73-76 LEM MS FUSION 879



**LOT 73**

## Lot 73 RUSL LADY RECKONING 2022

REG: RAA 4683891 | DOB: 1/23/22 | TAT: 2022 | 100% RED ANGUS

RED U-2 RECON 192Y



Sire RED U-2 RECKONING 149A

RED U-2 ANEXA 271Y

ANDRAS FUSION R236

Dam LEM MS FUSION 879

LEM REDEMPTION 611 ET

PRO S	HERD	GRID	CED	BW	WW	YW	MILK	CEM	HP
102	53	49	12	-1.2	58	99	26	9	6
34%	53%	28%	61%	63%	61%	46%	51%	19%	98%
ST	MARB	YG	CW	REA	FAT				
16	0.46	0.10	28	0.10	0.02				
47%	39%	71%	31%	56%	60%				

- 2022 is an extremely stylish heifer that is sound, deep flanked, and clean made. She has a striking feminine profile and will look great in the showing and the front pasture.
- Top 35% ProS, Top 26% Gridmaster, Top 28% ADG, Top 26% ME, and Top 19% CEM.



# Red Angus Heifers

## Lot 74 RUSL LADY RECKONING 232

REG: RAA 4683889 | DOB: 1/19/22 | TAT: 232 | 100% RED ANGUS

RED U-2 RECON 192Y

Sire RED U-2 RECKONING 149A

RED U-2 ANEXA 271Y

ANDRAS FUSION R236

Dam LEM MS FUSION 879

LEM REDEMPTION 616 ET

PRO S	HERD	GRID	CED	BW	WW	YW	MILK	CEM	HP
102	53	49	12	-1.2	58	99	26	9	6
34%	53%	28%	61%	63%	61%	46%	51%	19%	98%
ST	MARB	YG	CW	REA	FAT				
16	0.46	0.10	28	0.10	0.02				
47%	39%	71%	31%	56%	60%				

- 232 may be the brood cow of the four heifers. She is whale-bellied, extremely elongated and neat in her front third, and sound. She is a lover and wants scratched in the pen every day.
- Top 35% ProS, Top 26% Gridmaster, Top 28% ADG, Top 26% ME, and Top 19% CEM.



LOT 74

## Lot 75 RUSL LADY RED BOX 210

REG: RAA 4683887 | DOB: 1/9/22 | TAT: 210 | 100% RED ANGUS

SLGN WIDELOAD 920W

Sire MANN RED BOX 55C

PELTON MISS AJA 0839U

ANDRAS FUSION R236

Dam LEM MS FUSION 879

LEM REDEMPTION 616 ET

PRO S	HERD	GRID	CED	BW	WW	YW	MILK	CEM	HP
81	28	53	13	-1.3	63	109	24	7	11
70%	92%	22%	52%	60%	40%	25%	70%	48%	64%
ST	MARB	YG	CW	REA	FAT				
13	0.49	0.08	33	0.17	0.01				
79%	33%	60%	16%	40%	41%				

- Red Box needs no introduction to the Red Angus world, both in the show ring and as a production sire- we feel that this heifer will follow that model. Have fun showing her and taking home purples, then put her in the pasture and watch her work. This heifer is pretty and powerful!
- Top 21% Gridmaster, Top 25% WW, Top 13% ADG, Top 16% CW.



LOT 75

## Lot 76 RUSL LADY HARD DRIVE 2016

REG: RAA 4683901 | DOB: 1/11/22 | TAT: 2016 | 100% RED ANGUS

LACY GOLD BAR 8123

Sire BIEBER HARD DRIVE Y120

BIEBER LAURA 158W

ANDRAS FUSION R236

Dam LEM MS FUSION 879

LEM REDEMPTION 611 ET

PRO S	HERD	GRID	CED	BW	WW	YW	MILK	CEM	HP
132	47	84	14	-2.3	70	120	21	7	10
6%	65%	1%	38%	41%	16%	9%	88%	44%	71%
ST	MARB	YG	CW	REA	FAT				
15	0.69	0.00	43	0.39	-0.00				
49%	8%	20%	3%	9%	9%				

- Offering 50% embryo interest and no possession. Because Hard Drive semen is virtually non-existent, we have decided to only offer 50% embryo interest. Direct Hard Drive progeny are rare and valuable, especially when they look like this one and have over half of their EPDs in the top 25% of the breed!
- We feel that this heifer follows in the footsteps of her mother, in that she is extremely elite in both her phenotype and genotype. She is pretty-headed, big-bellied, huge-topped, and stands on a big square hip and foot.
- Top 1% Gridmaster, Top 7% ProS, Top 17% WW, Top 10% YW, Top 6% ADG, Top 8% Marb, Top 21% YG, Top 3% CW, Top 9% REA, and Top 9% FAT.



LOT 76



Lemke Cattle  
1757 Road 2500  
Lawrence, NE 68957



LOT 3

**FEATURING GROUPS OF ET BROTHERS  
FROM THESE BREED LEADING SIRES**  
*Angus* Musgrave 316 Exclusive, Mogck Entice,  
Hoover No Doubt, LD Capitalist 316, SAV Resource 1441  
*Red Angus* HXC Grindstone 9908G, 3SC Domain A163,  
Pelton Wideload 78B, Bieber CL Stockmarket E119



LOT 39

*Reliable  
Leading Genetics*

*17th Annual Bull and Heifer Sale*

**FEBRUARY 10, 2023 - 1:30 PM**

**AT THE RANCH - LAWRENCE, NEB**

*Selling*

**70 Angus, Red Angus, Angus Hybrid Bulls**  
Plus 7 Registered & 8 Commercial Red Angus Open Heifers

